

NCKX3 Polyclonal Antibody

Catalog No :	YT2993
Reactivity :	Human;Mouse;Rat
Applications :	WB;ELISA
Target :	NCKX3
Gene Name :	SLC24A3
Protein Name :	Sodium/potassium/calcium exchanger 3
Human Gene Id :	57419
Human Swiss Prot No :	Q9HC58
Mouse Swiss Prot No :	Q99PD7
Rat Swiss Prot No :	Q9EPQ0
Immunogen :	The antiserum was produced against synthesized peptide derived from human SLC24A3. AA range:354-403
Specificity :	NCKX3 Polyclonal Antibody detects endogenous levels of NCKX3 protein.
Formulation :	Liquid in PBS containing 50% glycerol, 0.5% BSA and 0.02% sodium azide.
Source :	Polyclonal, Rabbit,IgG
Dilution :	WB 1:500 - 1:2000. ELISA: 1:20000. Not yet tested in other applications.
Purification :	The antibody was affinity-purified from rabbit antiserum by affinity-chromatography using epitope-specific immunogen.
Concentration :	1 mg/ml
Storage Stability :	-15°C to -25°C/1 year(Do not lower than -25°C)

Observed Band : 60kD

Background : Plasma membrane sodium/calcium exchangers are an important component of intracellular calcium homeostasis and electrical conduction. Potassium-dependent sodium/calcium exchangers such as SLC24A3 are believed to transport 1 intracellular calcium and 1 potassium ion in exchange for 4 extracellular sodium ions (Kraev et al., 2001 [PubMed 11294880]).[supplied by OMIM, Mar 2008],

Function : function:Transports 1 Ca(2+) and 1 K(+) in exchange for 4 Na(+).,similarity:Belongs to the sodium/potassium/calcium exchanger family. SLC24A subfamily.,tissue specificity:Abundant in the brain. Expressed at low levels in the aorta, uterus and intestine.,

Subcellular Location : Cell membrane ; Multi-pass membrane protein .

Expression : Abundant in the brain (PubMed:11294880). Expressed at low levels in the aorta, uterus and intestine (PubMed:11294880).

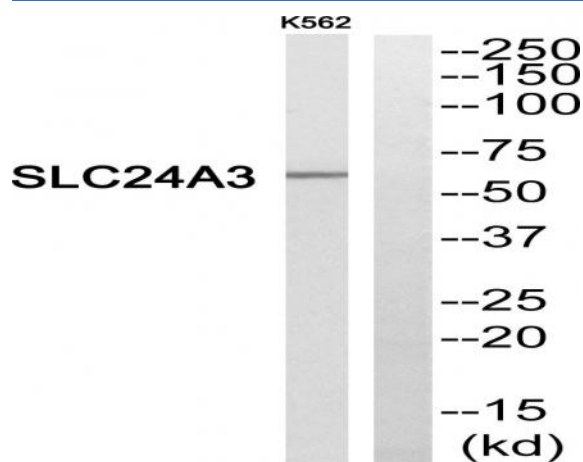
Sort : 10611

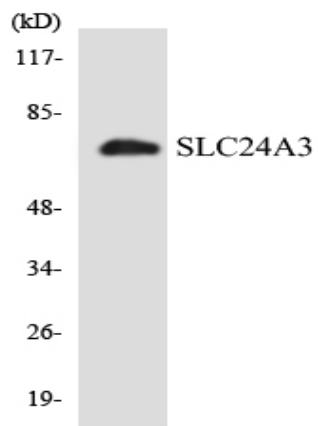
No4 : 1

Host : Rabbit

Modifications : Unmodified

Products Images





Western blot analysis of the lysates from K562 cells using SLC24A3 antibody.