

NCKX6 Polyclonal Antibody

Catalog No :	YT2995
Reactivity :	Human;Rat;Mouse;
Applications :	WB;IHC;IF;ELISA
Target :	NCKX6
Gene Name :	SLC24A6
Protein Name :	Sodium/potassium/calcium exchanger 6
Human Gene Id :	80024
Human Swiss Prot No :	Q6J4K2
Mouse Swiss Prot No :	Q925Q3
Immunogen :	The antiserum was produced against synthesized peptide derived from human SLC24A6. AA range:494-543
Specificity :	NCKX6 Polyclonal Antibody detects endogenous levels of NCKX6 protein.
Formulation :	Liquid in PBS containing 50% glycerol, 0.5% BSA and 0.02% sodium azide.
Source :	Polyclonal, Rabbit,IgG
Dilution :	WB 1:500 - 1:2000. ELISA: 1:20000.. IF 1:50-200
Purification :	The antibody was affinity-purified from rabbit antiserum by affinity-chromatography using epitope-specific immunogen.
Concentration :	1 mg/ml
Storage Stability :	-15°C to -25°C/1 year(Do not lower than -25°C)
Observed Band :	60kD

Background : SLC24A6 belongs to a family of potassium-dependent sodium/calcium exchangers that maintain cellular calcium homeostasis through the electrogenic countertransport of 4 sodium ions for 1 calcium ion and 1 potassium ion (Cai and Lytton, 2004 [PubMed 14625281]).[supplied by OMIM, Mar 2008],

Function : function:Transports Ca(2+) in exchange for either Li(+) or Na(+), explaining how Li(+) catalyzes Ca(2+) exchange. In contrast to other members of the family its function is independent of K(+).,miscellaneous:Strongly inhibited by zinc.,similarity:Belongs to the sodium/potassium/calcium exchanger family. SLC24A subfamily.,

Subcellular Location : Mitochondrion inner membrane ; Multi-pass membrane protein .

Expression : Present in pancreatic beta-cells (at protein level).

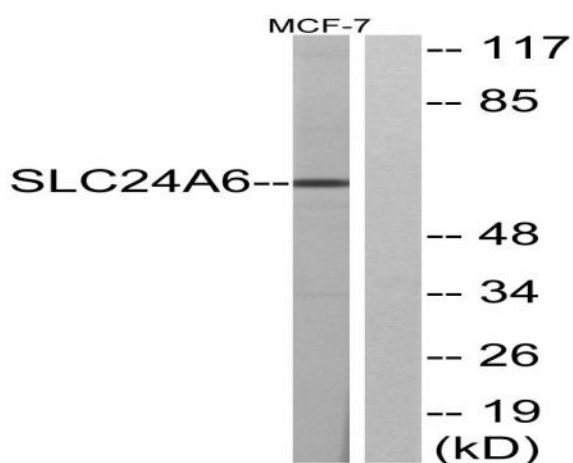
Sort : 10613

No4 : 1

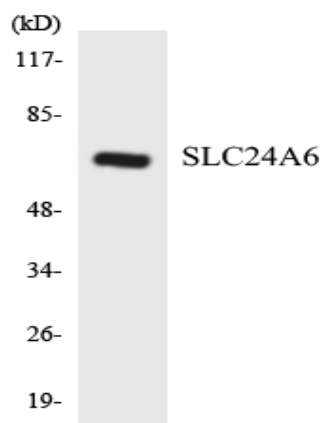
Host : Rabbit

Modifications : Unmodified

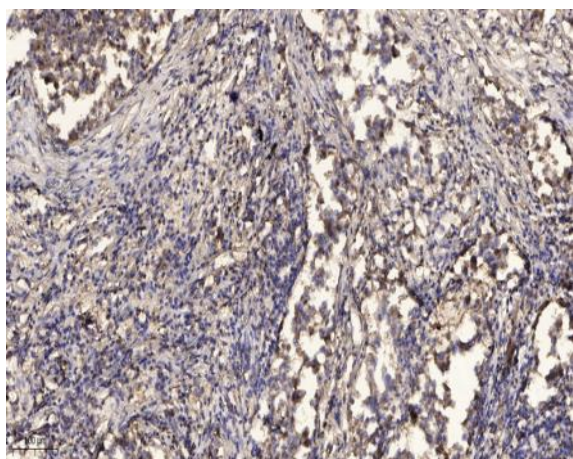
Products Images



Western blot analysis of lysates from MCF-7 cells, using SLC24A6 Antibody. The lane on the right is blocked with the synthesized peptide.



Western blot analysis of the lysates from HeLa cells using SLC24A6 antibody.



Immunohistochemical analysis of paraffin-embedded human Squamous cell carcinoma of lung. 1, Antibody was diluted at 1:200(4° overnight). 2, Tris-EDTA,pH9.0 was used for antigen retrieval. 3,Secondary antibody was diluted at 1:200(room temperature, 45min).