

## Nectin 3 Polyclonal Antibody

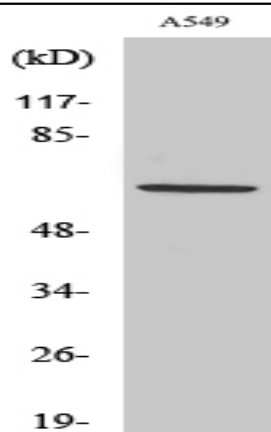
<b>Catalog No :</b>	YT3024
<b>Reactivity :</b>	Human;Mouse
<b>Applications :</b>	WB;ELISA
<b>Target :</b>	Nectin 3
<b>Fields :</b>	>>Cell adhesion molecules;>>Adherens junction
<b>Gene Name :</b>	PVRL3
<b>Protein Name :</b>	Poliovirus receptor-related protein 3
<b>Human Gene Id :</b>	25945
<b>Human Swiss Prot No :</b>	Q9NQS3
<b>Mouse Gene Id :</b>	58998
<b>Mouse Swiss Prot No :</b>	Q9JLB9
<b>Immunogen :</b>	The antiserum was produced against synthesized peptide derived from human PVRL3. AA range:184-233
<b>Specificity :</b>	Nectin 3 Polyclonal Antibody detects endogenous levels of Nectin 3 protein.
<b>Formulation :</b>	Liquid in PBS containing 50% glycerol, 0.5% BSA and 0.02% sodium azide.
<b>Source :</b>	Polyclonal, Rabbit,IgG
<b>Dilution :</b>	WB 1:500 - 1:2000. ELISA: 1:5000. Not yet tested in other applications.
<b>Purification :</b>	The antibody was affinity-purified from rabbit antiserum by affinity-chromatography using epitope-specific immunogen.
<b>Concentration :</b>	1 mg/ml

---

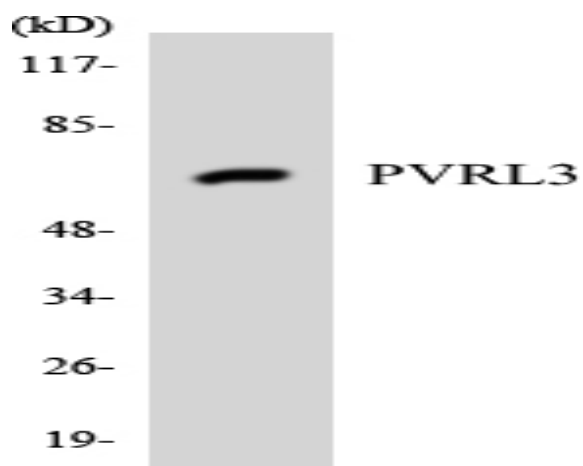
<b>Storage Stability :</b>	-15°C to -25°C/1 year(Do not lower than -25°C)
<b>Observed Band :</b>	61kD
<b>Cell Pathway :</b>	Cell adhesion molecules (CAMs);Adherens_Junction;
<b>Background :</b>	This gene encodes a member of the nectin family of proteins, which function as adhesion molecules at adherens junctions. This family member interacts with other nectin-like proteins and with afadin, a filamentous actin-binding protein involved in the regulation of directional motility, cell proliferation and survival. This gene plays a role in ocular development involving the ciliary body. Mutations in this gene are believed to result in congenital ocular defects. Alternative splicing results in multiple transcript variants. [provided by RefSeq, Aug 2011],
<b>Function :</b>	function:Plays a role in cell-cell adhesion through heterophilic trans-interactions with nectin-like proteins or nectins, such as trans-interaction with PVRL2/nectin-2 at Sertoli-spermatid junctions. Trans-interaction with PVR induces activation of CDC42 and RAC small G proteins through common signaling molecules such as SRC and RAP1. Also involved in the formation of cell-cell junctions, including adherens junctions and synapses. Induces endocytosis-mediated down-regulation of PVR from the cell surface, resulting in reduction of cell movement and proliferation. Plays a role in the morphology of the ciliary body.,similarity:Belongs to the nectin family.,similarity:Contains 1 Ig-like V-type (immunoglobulin-like) domain.,similarity:Contains 2 Ig-like C2-type (immunoglobulin-like) domains.,subunit:Cis- and trans-homodimer. Can form trans-heterodimers with PVRL1/nectin-1, PVRL2/nectin-2, PVR
<b>Subcellular Location :</b>	Cell membrane ; Single-pass membrane protein . Cell junction, synapse, postsynaptic cell membrane .
<b>Expression :</b>	Predominantly expressed in testis and placenta as well as in many cell lines, including epithelial cell lines.
<b>Sort :</b>	10654
<b>No4 :</b>	1
<b>Host :</b>	Rabbit
<b>Modifications :</b>	Unmodified

---

## Products Images



Western Blot analysis of various cells using Nectin 3 Polyclonal Antibody



Western blot analysis of the lysates from HUVECcells using PVRL3 antibody.