

## NET-5 Polyclonal Antibody

<b>Catalog No :</b>	YT3041
<b>Reactivity :</b>	Human;Mouse
<b>Applications :</b>	WB;ELISA
<b>Target :</b>	NET-5
<b>Gene Name :</b>	TSPAN9
<b>Protein Name :</b>	Tetraspanin-9
<b>Human Gene Id :</b>	10867
<b>Human Swiss Prot No :</b>	O75954
<b>Mouse Gene Id :</b>	109246
<b>Mouse Swiss Prot No :</b>	Q8BJU2
<b>Immunogen :</b>	The antiserum was produced against synthesized peptide derived from human NET-5. AA range:72-121
<b>Specificity :</b>	NET-5 Polyclonal Antibody detects endogenous levels of NET-5 protein.
<b>Formulation :</b>	Liquid in PBS containing 50% glycerol, 0.5% BSA and 0.02% sodium azide.
<b>Source :</b>	Polyclonal, Rabbit,IgG
<b>Dilution :</b>	WB 1:500 - 1:2000. ELISA: 1:10000. Not yet tested in other applications.
<b>Purification :</b>	The antibody was affinity-purified from rabbit antiserum by affinity-chromatography using epitope-specific immunogen.
<b>Concentration :</b>	1 mg/ml
<b>Storage Stability :</b>	-15°C to -25°C/1 year(Do not lower than -25°C)

**Observed Band :** 27kD

**Background :** The protein encoded by this gene is a member of the transmembrane 4 superfamily, also known as the tetraspanin family. Most of these members are cell-surface proteins that are characterized by the presence of four hydrophobic domains. The proteins mediate signal transduction events that play a role in the regulation of cell development, activation, growth and motility. Alternatively spliced transcripts encoding the same protein have been identified. [provided by RefSeq, Nov 2009],

**Function :** PTM:Glycosylated.,similarity:Belongs to the tetraspanin (TM4SF) family.,subcellular location:Colocalizes with GP6 in tetraspanin microdomains on the platelet surface.,subunit:Found in a complex with GP6.,tissue specificity:Expressed in megakaryocytes and platelets (at protein level).,

**Subcellular Location :** Membrane ; Multi-pass membrane protein . Colocalizes with GP6 in tetraspanin microdomains on the platelet surface. .

**Expression :** Expressed in megakaryocytes and platelets (at protein level).

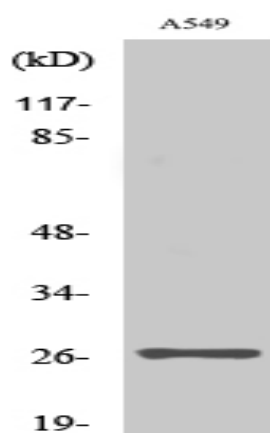
**Sort :** 10676

**No4 :** 1

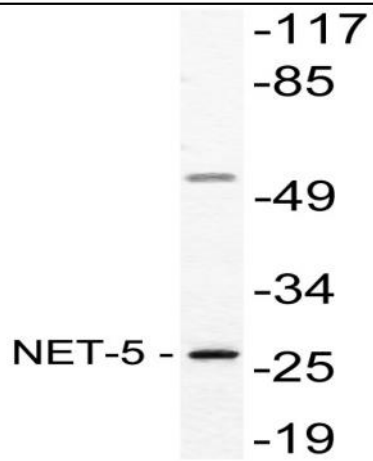
**Host :** Rabbit

**Modifications :** Unmodified

## Products Images



Western Blot analysis of various cells using NET-5 Polyclonal Antibody diluted at 1:2000



Western blot analysis of lysate from A549 cells, using NET-5 antibody.