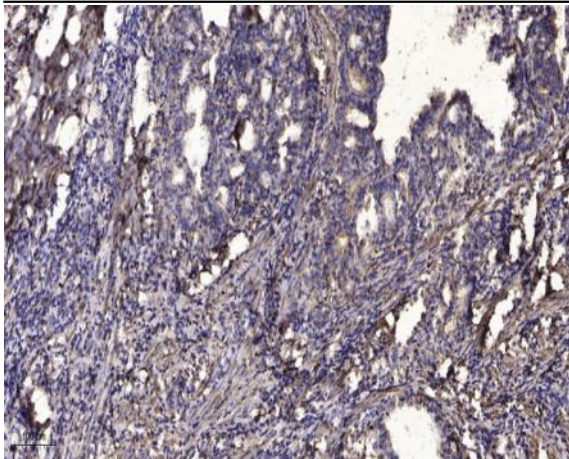


Neurocalcin δ Polyclonal Antibody

Catalog No :	YT3063
Reactivity :	Human;Mouse;Rat
Applications :	IHC;IF;ELISA
Target :	Neurocalcin δ
Fields :	>>Olfactory transduction
Gene Name :	NCALD
Protein Name :	Neurocalcin-delta
Human Gene Id :	83988
Human Swiss Prot No :	P61601
Mouse Gene Id :	52589
Mouse Swiss Prot No :	Q91X97
Rat Gene Id :	553106
Rat Swiss Prot No :	Q5PQN0
Immunogen :	Synthesized peptide derived from Neurocalcin δ . at AA range: 370-450
Specificity :	Neurocalcin δ Polyclonal Antibody detects endogenous levels of Neurocalcin δ protein.
Formulation :	Liquid in PBS containing 50% glycerol, 0.5% BSA and 0.02% sodium azide.
Source :	Polyclonal, Rabbit,IgG
Dilution :	IHC 1:100 - 1:300. ELISA: 1:20000.. IF 1:50-200

Purification :	The antibody was affinity-purified from rabbit antiserum by affinity-chromatography using epitope-specific immunogen.
Concentration :	1 mg/ml
Storage Stability :	-15°C to -25°C/1 year(Do not lower than -25°C)
Molecularweight :	22kD
Background :	This gene encodes a member of the neuronal calcium sensor (NCS) family of calcium-binding proteins. The protein contains an N-terminal myristoylation signal and four EF-hand calcium binding loops. The protein is cytosolic at resting calcium levels; however, elevated intracellular calcium levels induce a conformational change that exposes the myristoyl group, resulting in protein association with membranes and partial co-localization with the perinuclear trans-golgi network. The protein is thought to be a regulator of G protein-coupled receptor signal transduction. Several alternatively spliced variants of this gene have been determined, all of which encode the same protein; additional variants may exist but their biological validity has not been determined. [provided by RefSeq, Jul 2008],
Function :	function:May be involved in the calcium-dependent regulation of rhodopsin phosphorylation. Binds three calcium ions.,similarity:Belongs to the recoverin family.,similarity:Contains 4 EF-hand domains.,tissue specificity:Retina, cerebrum, cerebellum, brain stem, spinal cord, testis, ovary and small intestine.,
Subcellular Location :	intracellular,cytosol,clathrin coat of trans-Golgi network vesicle,extracellular exosome,
Expression :	Retina, cerebrum, cerebellum, brain stem, spinal cord, testis, ovary and small intestine.
Sort :	10713
No4 :	1
Host :	Rabbit
Modifications :	Unmodified

Products Images



Immunohistochemical analysis of paraffin-embedded human Gastric adenocarcinoma. 1, Antibody was diluted at 1:200(4° overnight). 2, Tris-EDTA,pH9.0 was used for antigen retrieval. 3,Secondary antibody was diluted at 1:200(room temperature, 45min).