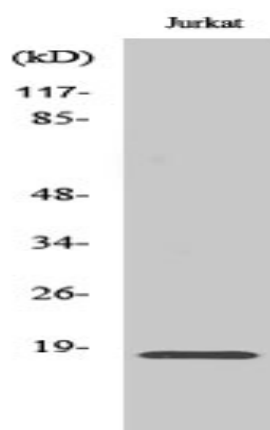


Neuromedin-S Polyclonal Antibody

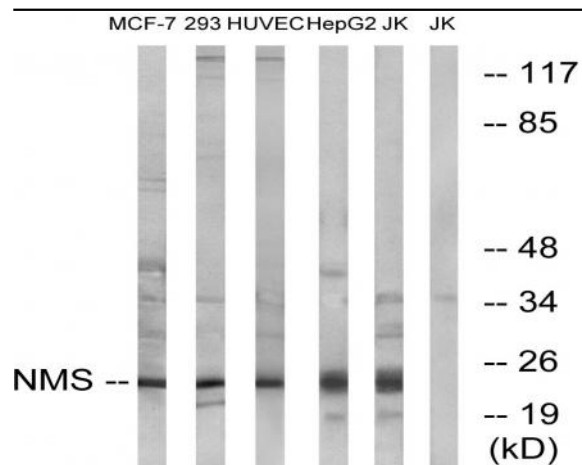
Catalog No :	YT3067
Reactivity :	Human;Rat;Mouse;
Applications :	WB;IHC;IF;ELISA
Target :	Neuromedin-S
Fields :	>>Neuroactive ligand-receptor interaction
Gene Name :	NMS
Protein Name :	Neuromedin-S
Human Gene Id :	129521
Human Swiss Prot No :	Q5H8A3
Mouse Swiss Prot No :	Q5H8A1
Immunogen :	The antiserum was produced against synthesized peptide derived from human NMS. AA range:104-153
Specificity :	Neuromedin-S Polyclonal Antibody detects endogenous levels of Neuromedin-S protein.
Formulation :	Liquid in PBS containing 50% glycerol, 0.5% BSA and 0.02% sodium azide.
Source :	Polyclonal, Rabbit,IgG
Dilution :	WB 1:500 - 1:2000. IHC 1:100 - 1:300. ELISA: 1:40000.. IF 1:50-200
Purification :	The antibody was affinity-purified from rabbit antiserum by affinity-chromatography using epitope-specific immunogen.
Concentration :	1 mg/ml
Storage Stability :	-15°C to -25°C/1 year(Do not lower than -25°C)

Observed Band : 24kD**Background :** This gene encodes a member of the neuromedin family of neuropeptides. The encoded preproprotein is proteolytically processed to generate a biologically active neuropeptide that plays a role in the regulation of circadian rhythm, anorexigenic action, antidiuretic action, cardiovascular function and stimulation of oxytocin and vasopressin release. [provided by RefSeq, May 2016],**Function :** function:Implicated in the regulation of circadian rhythms through autocrine and/or paracrine actions.,similarity:Belongs to the NmU family.,**Subcellular Location :** Secreted .**Expression :** Brain,**Sort :** 10721**No4 :** 1**Host :** Rabbit**Modifications :** Unmodified

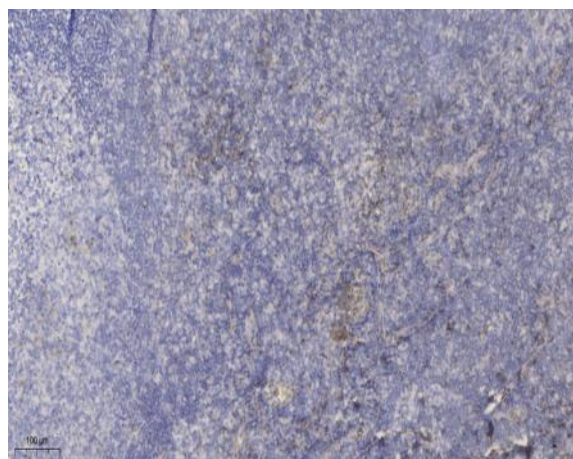
Products Images



Western Blot analysis of various cells using Neuromedin-S Polyclonal Antibody diluted at 1:1000



Western blot analysis of lysates from Jurkat, HepG2, HUVEC, 293, and MCF-7 cells, using NMS Antibody. The lane on the right is blocked with the synthesized peptide.



Immunohistochemical analysis of paraffin-embedded human tonsil. 1, Antibody was diluted at 1:200(4° overnight). 2, Tris-EDTA,pH9.0 was used for antigen retrieval. 3,Secondary antibody was diluted at 1:200(room temperature, 30min).