

Neuron Navigator 1 Polyclonal Antibody

Catalog No :	YT3069
Reactivity :	Human;Mouse
Applications :	IHC;IF;ELISA
Target :	Neuron Navigator 1
Gene Name :	NAV1
Protein Name :	Neuron navigator 1
Human Gene Id :	89796
Human Swiss Prot No :	Q8NEY1
Mouse Gene Id :	215690
Mouse Swiss Prot No :	Q8CH77
Immunogen :	Synthesized peptide derived from Neuron Navigator 1 . at AA range: 510-590
Specificity :	Neuron Navigator 1 Polyclonal Antibody detects endogenous levels of Neuron Navigator 1 protein.
Formulation :	Liquid in PBS containing 50% glycerol, 0.5% BSA and 0.02% sodium azide.
Source :	Polyclonal, Rabbit,IgG
Dilution :	IHC 1:100 - 1:300. ELISA: 1:40000.. IF 1:50-200
Purification :	The antibody was affinity-purified from rabbit antiserum by affinity-chromatography using epitope-specific immunogen.
Concentration :	1 mg/ml
Storage Stability :	-15°C to -25°C/1 year(Do not lower than -25°C)

Observed Band : 200kD

Background : This gene belongs to the neuron navigator family and is expressed predominantly in the nervous system. The encoded protein contains coiled-coil domains and a conserved AAA domain characteristic for ATPases associated with a variety of cellular activities. This gene is similar to unc-53, a *Caenorhabditis elegans* gene involved in axon guidance. The exact function of this gene is not known, but it is thought to play a role in neuronal development and regeneration. Alternative splicing results in multiple transcript variants. [provided by RefSeq, Nov 2009],

Function : developmental stage:Expressed in fetal brain and heart.,function:May be involved in neuronal migration.,similarity:Belongs to the Nav/unc-53 family.,subcellular location:Associates with a subset of microtubule plus ends. Enriched in neuronal growth cones.,subunit:Interacts with tubulin.,tissue specificity:Broadly expressed at low levels. Expressed at high levels in heart, skeletal muscle and placenta.,

Subcellular Location : Cytoplasm, cytoskeleton . Associates with a subset of microtubule plus ends. Enriched in neuronal growth cones (By similarity). .

Expression : Broadly expressed at low levels. Expressed at high levels in heart, skeletal muscle and placenta.

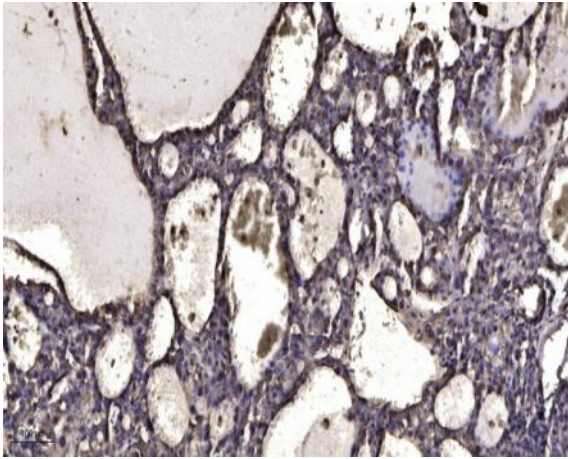
Sort : 10723

No4 : 1

Host : Rabbit

Modifications : Unmodified

Products Images



Immunohistochemical analysis of paraffin-embedded human liver cancer. 1, Antibody was diluted at 1:200(4° overnight). 2, Tris-EDTA,pH9.0 was used for antigen retrieval. 3,Secondary antibody was diluted at 1:200(room temperature, 45min).