

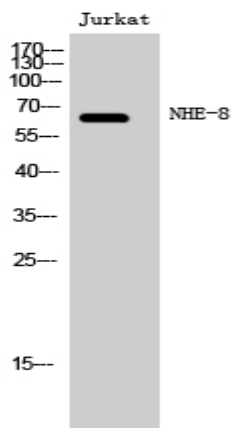
## NHE-8 Polyclonal Antibody

<b>Catalog No :</b>	YT3119
<b>Reactivity :</b>	Human;Mouse;Rat
<b>Applications :</b>	WB;IHC;IF;ELISA
<b>Target :</b>	NHE-8
<b>Gene Name :</b>	SLC9A8
<b>Protein Name :</b>	Sodium/hydrogen exchanger 8
<b>Human Gene Id :</b>	23315
<b>Human Swiss Prot No :</b>	Q9Y2E8
<b>Mouse Gene Id :</b>	77031
<b>Mouse Swiss Prot No :</b>	Q8R4D1
<b>Rat Gene Id :</b>	311651
<b>Rat Swiss Prot No :</b>	Q4L208
<b>Immunogen :</b>	The antiserum was produced against synthesized peptide derived from human SLC9A8. AA range:451-500
<b>Specificity :</b>	NHE-8 Polyclonal Antibody detects endogenous levels of NHE-8 protein.
<b>Formulation :</b>	Liquid in PBS containing 50% glycerol, 0.5% BSA and 0.02% sodium azide.
<b>Source :</b>	Polyclonal, Rabbit,IgG
<b>Dilution :</b>	WB 1:500 - 1:2000.IHC:1:50-300 ELISA: 1:20000.. IF 1:50-200
<b>Purification :</b>	The antibody was affinity-purified from rabbit antiserum by affinity-chromatography using epitope-specific immunogen.

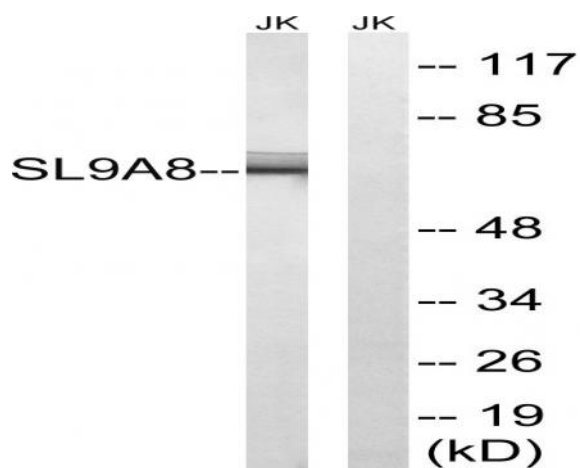
<b>Concentration :</b>	1 mg/ml
<b>Storage Stability :</b>	-15°C to -25°C/1 year(Do not lower than -25°C)
<b>Observed Band :</b>	65kD
<b>Background :</b>	Sodium-hydrogen exchangers (NHEs), such as SLC9A8, are integral transmembrane proteins that exchange extracellular Na <sup>+</sup> for intracellular H <sup>+</sup> . NHEs have multiple functions, including intracellular pH homeostasis, cell volume regulation, and electroneutral NaCl absorption in epithelia (Xu et al., 2008 [PubMed 18209477]).[supplied by OMIM, Apr 2009],
<b>Function :</b>	function:Involved in pH regulation to eliminate acids generated by active metabolism or to counter adverse environmental conditions. Major proton extruding system driven by the inward sodium ion chemical gradient. Plays an important role in signal transduction.,similarity:Belongs to the monovalent cation:proton antiporter 1 (CPA1) transporter (TC 2.A.36) family.,tissue specificity:Ubiquitous. Strongly expressed in skeletal muscle and kidney.,
<b>Subcellular Location :</b>	Golgi apparatus membrane ; Multi-pass membrane protein .
<b>Expression :</b>	Ubiquitous. Strongly expressed in skeletal muscle and kidney.
<b>Sort :</b>	10840
<b>No4 :</b>	1
<b>Host :</b>	Rabbit
<b>Modifications :</b>	Unmodified

---

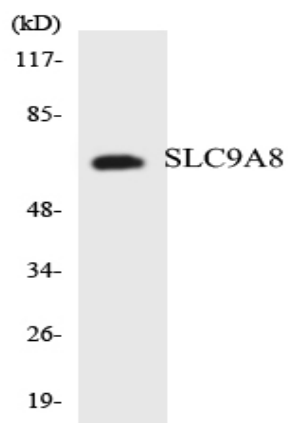
## Products Images



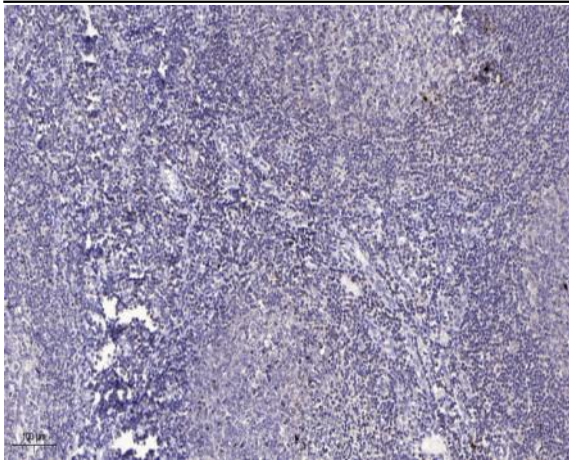
Western Blot analysis of Jurkat cells using NHE-8 Polyclonal Antibody



Western blot analysis of lysates from Jurkat cells, using SLC9A8 Antibody. The lane on the right is blocked with the synthesized peptide.



Western blot analysis of the lysates from HeLa cells using SLC9A8 antibody.



Immunohistochemical analysis of paraffin-embedded human tonsil. 1, Antibody was diluted at 1:200(4° overnight). 2, Tris-EDTA,pH9.0 was used for antigen retrieval. 3,Secondary antibody was diluted at 1:200(room temperature, 30min).