

Nidogen Polyclonal Antibody

Catalog No :	YT3126
Reactivity :	Human;Mouse;Rat
Applications :	WB;ELISA
Target :	Nidogen
Gene Name :	NID1
Protein Name :	Nidogen-1
Human Gene Id :	4811
Human Swiss Prot No :	P14543
Mouse Gene Id :	18073
Mouse Swiss Prot No :	P10493
Rat Swiss Prot No :	P08460
Immunogen :	The antiserum was produced against synthesized peptide derived from human NID1. AA range:219-268
Specificity :	Nidogen Polyclonal Antibody detects endogenous levels of Nidogen protein.
Formulation :	Liquid in PBS containing 50% glycerol, 0.5% BSA and 0.02% sodium azide.
Source :	Polyclonal, Rabbit,IgG
Dilution :	WB 1:500 - 1:2000. ELISA: 1:20000. Not yet tested in other applications.
Purification :	The antibody was affinity-purified from rabbit antiserum by affinity-chromatography using epitope-specific immunogen.
Concentration :	1 mg/ml

Storage Stability : -15°C to -25°C/1 year(Do not lower than -25°C)

Observed Band : 136kD

Background : nidogen 1(NID1) Homo sapiens This gene encodes a member of the nidogen family of basement membrane glycoproteins. The protein interacts with several other components of basement membranes, and may play a role in cell interactions with the extracellular matrix. [provided by RefSeq, Jul 2008],

Function : function:Sulfated glycoprotein widely distributed in basement membranes and tightly associated with laminin. Also binds to collagen IV and perlecan. It probably has a role in cell-extracellular matrix interactions.,PTM:N- and O-glycosylated.,similarity:Contains 1 NIDO domain.,similarity:Contains 1 nidogen G2 beta-barrel domain.,similarity:Contains 1 thyroglobulin type-1 domain.,similarity:Contains 4 LDL-receptor class B repeats.,similarity:Contains 6 EGF-like domains.,subunit:Interacts with FBLN1 and LGALS3BP.,

Subcellular Location : Secreted, extracellular space, extracellular matrix, basement membrane.

Expression : Brain,Placenta,Testis,

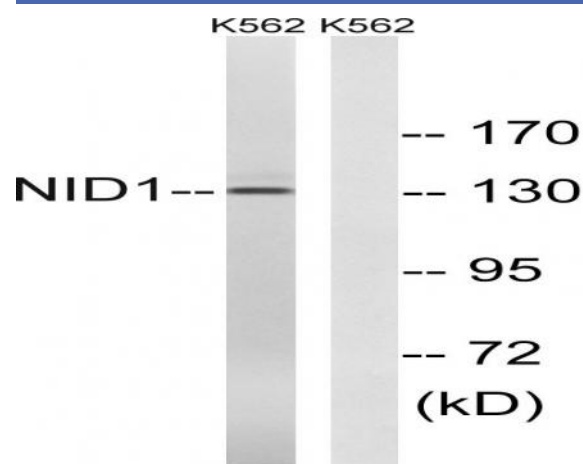
Sort : 10850

No4 : 1

Host : Rabbit

Modifications : Unmodified

Products Images



Western blot analysis of lysates from K562 cells, using NID1 Antibody. The lane on the right is blocked with the synthesized peptide.