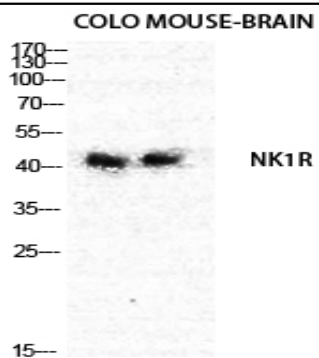


NK-1R Polyclonal Antibody

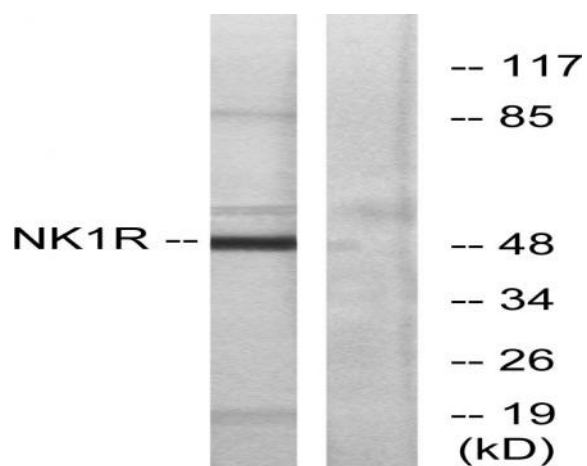
Catalog No :	YT3131
Reactivity :	Human;Mouse;Rat
Applications :	WB;IF;ELISA
Target :	NK-1R
Fields :	>>Calcium signaling pathway;>>Neuroactive ligand-receptor interaction
Gene Name :	TACR1
Protein Name :	Substance-P receptor
Human Gene Id :	6869
Human Swiss Prot No :	P25103
Mouse Gene Id :	21336
Mouse Swiss Prot No :	P30548
Rat Gene Id :	24807
Rat Swiss Prot No :	P14600
Immunogen :	The antiserum was produced against synthesized peptide derived from human NK1R. AA range:211-260
Specificity :	NK-1R Polyclonal Antibody detects endogenous levels of NK-1R protein.
Formulation :	Liquid in PBS containing 50% glycerol, 0.5% BSA and 0.02% sodium azide.
Source :	Polyclonal, Rabbit,IgG
Dilution :	WB 1:500 - 1:2000. IF 1:200 - 1:1000. ELISA: 1:5000. Not yet tested in other applications.

Purification :	The antibody was affinity-purified from rabbit antiserum by affinity-chromatography using epitope-specific immunogen.
Concentration :	1 mg/ml
Storage Stability :	-15°C to -25°C/1 year(Do not lower than -25°C)
Observed Band :	50kD
Cell Pathway :	Calcium;Neuroactive ligand-receptor interaction;
Background :	This gene belongs to a gene family of tachykinin receptors. These tachykinin receptors are characterized by interactions with G proteins and contain seven hydrophobic transmembrane regions. This gene encodes the receptor for the tachykinin substance P, also referred to as neurokinin 1. The encoded protein is also involved in the mediation of phosphatidylinositol metabolism of substance P. [provided by RefSeq, Sep 2008],
Function :	function:This is a receptor for the tachykinin neuropeptide substance P. It is probably associated with G proteins that activate a phosphatidylinositol-calcium second messenger system. The rank order of affinity of this receptor to tachykinins is: substance P > substance K > neuromedin-K.,online information:Tachykinin entry,similarity:Belongs to the G-protein coupled receptor 1 family.,
Subcellular Location :	Cell membrane; Multi-pass membrane protein.
Expression :	Brain,G-protein coupled receptors,Lung,Placenta,
Tag :	orthogonal
Sort :	1105
No4 :	1
Host :	Rabbit
Modifications :	Unmodified

Products Images



Western Blot analysis of MOUSE-BRAIN COLO cells using NK-1R Polyclonal Antibody diluted at 1:1000



Western blot analysis of lysates from Jurkat cells, using NK1R Antibody. The lane on the right is blocked with the synthesized peptide.