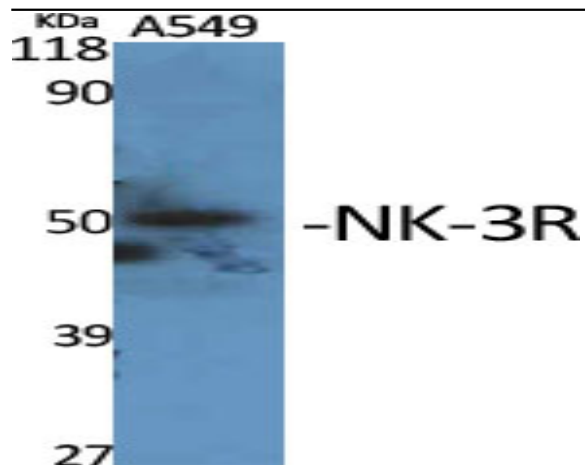


NK-3R Polyclonal Antibody

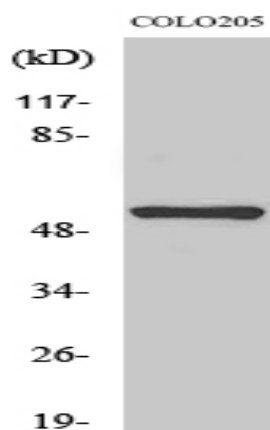
Catalog No :	YT3133
Reactivity :	Human;Mouse;Rat
Applications :	WB;IF;ELISA
Target :	NK-3R
Fields :	>>Calcium signaling pathway;>>Neuroactive ligand-receptor interaction
Gene Name :	TACR3
Protein Name :	Neuromedin-K receptor
Human Gene Id :	6870
Human Swiss Prot No :	P29371
Mouse Gene Id :	21338
Mouse Swiss Prot No :	P47937
Rat Gene Id :	24808
Rat Swiss Prot No :	P16177
Immunogen :	The antiserum was produced against synthesized peptide derived from human NK3R. AA range:401-450
Specificity :	NK-3R Polyclonal Antibody detects endogenous levels of NK-3R protein.
Formulation :	Liquid in PBS containing 50% glycerol, 0.5% BSA and 0.02% sodium azide.
Source :	Polyclonal, Rabbit,IgG
Dilution :	WB 1:500 - 1:2000. IF 1:200 - 1:1000. ELISA: 1:10000. Not yet tested in other applications.

Purification :	The antibody was affinity-purified from rabbit antiserum by affinity-chromatography using epitope-specific immunogen.
Concentration :	1 mg/ml
Storage Stability :	-15°C to -25°C/1 year(Do not lower than -25°C)
Observed Band :	52kD
Cell Pathway :	Calcium;Neuroactive ligand-receptor interaction;
Background :	This gene belongs to a family of genes that function as receptors for tachykinins. Receptor affinities are specified by variations in the 5' end of the sequence. The receptors belonging to this family are characterized by interactions with G proteins and 7 hydrophobic transmembrane regions. This gene encodes the receptor for the tachykinin neurokinin 3, also referred to as neurokinin B. [provided by RefSeq, Jul 2008],
Function :	function:This is a receptor for the tachykinin neuropeptide neuromedin-K (neurokinin B). It is associated with G proteins that activate a phosphatidylinositol-calcium second messenger system.,miscellaneous:The rank order of affinity of this receptor to tachykinins is: neuromedin-K > substance K > substance P.,PTM:The anchoring of this receptor to the plasma membrane is probably mediated by the palmitoylation of a cysteine residue.,similarity:Belongs to the G-protein coupled receptor 1 family.,
Subcellular Location :	Cell membrane; Multi-pass membrane protein.
Expression :	Brain,G-protein coupled receptors,PCR rescued clones,Placenta,
Sort :	10861
No4 :	1
Host :	Rabbit
Modifications :	Unmodified

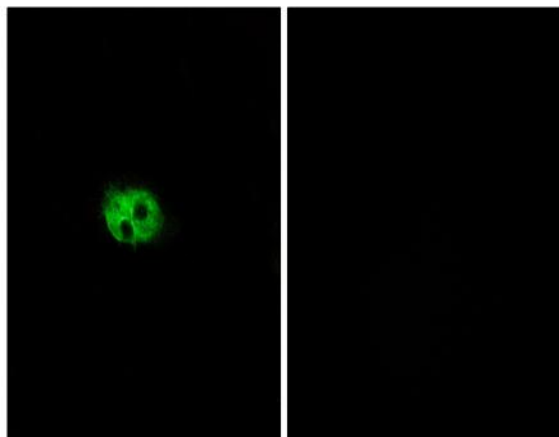
Products Images



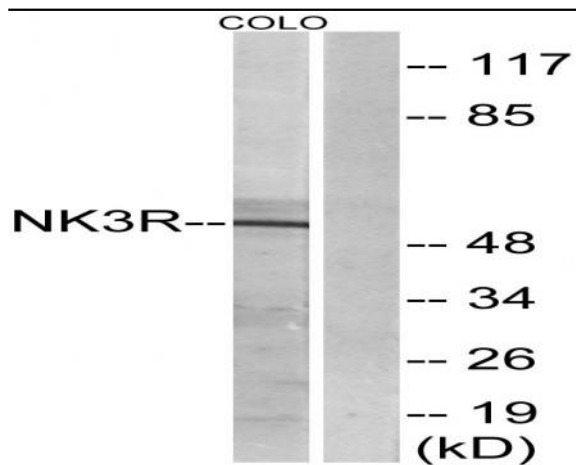
Western Blot analysis of various cells using NK-3R Polyclonal Antibody cells nucleus extracted by Minute TM Cytoplasmic and Nuclear Fractionation kit (SC-003, Inventbiotech, MN, USA).



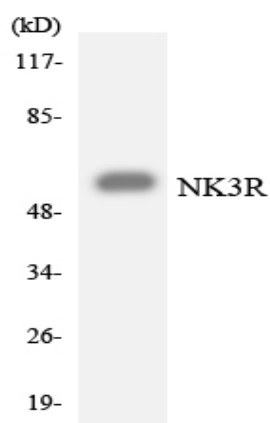
Western Blot analysis of COLO205 cells using NK-3R Polyclonal Antibody cells nucleus extracted by Minute TM Cytoplasmic and Nuclear Fractionation kit (SC-003, Inventbiotech, MN, USA).



Immunofluorescence analysis of A549 cells, using NK3R Antibody. The picture on the right is blocked with the synthesized peptide.



Western blot analysis of lysates from COLO205 cells, using NK3R Antibody. The lane on the right is blocked with the synthesized peptide.



Western blot analysis of the lysates from HepG2 cells using NK3R antibody.