

## NKp30 Polyclonal Antibody

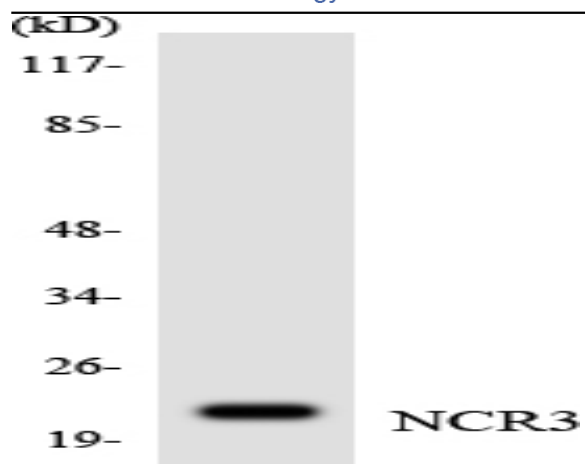
<b>Catalog No :</b>	YT3135
<b>Reactivity :</b>	Human;Rat
<b>Applications :</b>	WB;ELISA
<b>Target :</b>	NKp30
<b>Fields :</b>	>>Natural killer cell mediated cytotoxicity
<b>Gene Name :</b>	NCR3
<b>Protein Name :</b>	Natural cytotoxicity triggering receptor 3
<b>Human Gene Id :</b>	259197
<b>Human Swiss Prot No :</b>	O14931
<b>Rat Swiss Prot No :</b>	Q8CFD9
<b>Immunogen :</b>	The antiserum was produced against synthesized peptide derived from human NCR3. AA range:104-153
<b>Specificity :</b>	NKp30 Polyclonal Antibody detects endogenous levels of NKp30 protein.
<b>Formulation :</b>	Liquid in PBS containing 50% glycerol, 0.5% BSA and 0.02% sodium azide.
<b>Source :</b>	Polyclonal, Rabbit,IgG
<b>Dilution :</b>	WB 1:500 - 1:2000. ELISA: 1:40000. Not yet tested in other applications.
<b>Purification :</b>	The antibody was affinity-purified from rabbit antiserum by affinity-chromatography using epitope-specific immunogen.
<b>Concentration :</b>	1 mg/ml
<b>Storage Stability :</b>	-15°C to -25°C/1 year(Do not lower than -25°C)

---

<b>Observed Band :</b>	22kD
<b>Cell Pathway :</b>	Natural killer cell mediated cytotoxicity;
<b>Background :</b>	The protein encoded by this gene is a natural cytotoxicity receptor (NCR) that may aid NK cells in the lysis of tumor cells. The encoded protein interacts with CD3-zeta (CD247), a T-cell receptor. A single nucleotide polymorphism in the 5' untranslated region of this gene has been associated with mild malaria susceptibility. Three transcript variants encoding different isoforms have been found for this gene.[provided by RefSeq, May 2010],
<b>Function :</b>	function:Cytotoxicity-activating receptor that may contribute to the increased efficiency of activated natural killer (NK) cells to mediate tumor cell lysis.,polymorphism:A genetic variation in NCR3 is associated with mild malaria susceptibility [MIM:609148].,similarity:Belongs to the natural cytotoxicity receptor (NCR) family.,similarity:Contains 1 Ig-like (immunoglobulin-like) domain.,subunit:Interacts with CD3Z.,tissue specificity:Selectively expressed by all resting and activated NK cells and weakly expressed in spleen.,
<b>Subcellular Location :</b>	Cell membrane ; Single-pass type I membrane protein .
<b>Expression :</b>	Selectively expressed by all resting and activated NK cells and weakly expressed in spleen.
<b>Sort :</b>	10866
<b>No4 :</b>	1
<b>Host :</b>	Rabbit
<b>Modifications :</b>	Unmodified

---

## Products Images



Western blot analysis of the lysates from K562 cells using NCR3 antibody.