

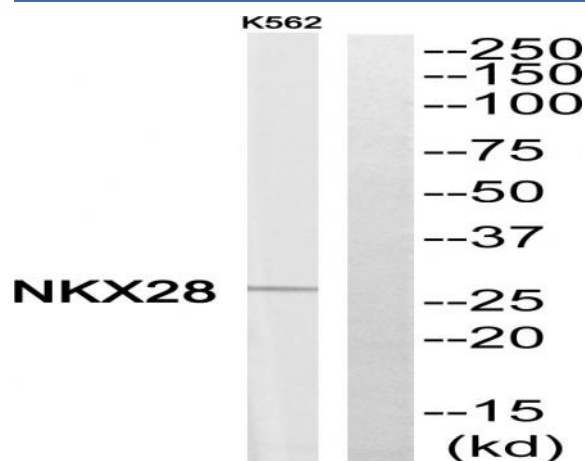
## Nkx-2.8 Polyclonal Antibody

<b>Catalog No :</b>	YT3141
<b>Reactivity :</b>	Human;Rat;Mouse;
<b>Applications :</b>	WB;ELISA
<b>Target :</b>	Nkx-2.8
<b>Gene Name :</b>	NKX2-8
<b>Protein Name :</b>	Homeobox protein Nkx-2.8
<b>Human Gene Id :</b>	26257
<b>Human Swiss Prot No :</b>	Q8IUT7
<b>Immunogen :</b>	The antiserum was produced against synthesized peptide derived from human NKX28. AA range:20-69
<b>Specificity :</b>	Nkx-2.8 Polyclonal Antibody detects endogenous levels of Nkx-2.8 protein.
<b>Formulation :</b>	Liquid in PBS containing 50% glycerol, 0.5% BSA and 0.02% sodium azide.
<b>Source :</b>	Polyclonal, Rabbit,IgG
<b>Dilution :</b>	WB 1:500 - 1:2000. ELISA: 1:40000. Not yet tested in other applications.
<b>Purification :</b>	The antibody was affinity-purified from rabbit antiserum by affinity-chromatography using epitope-specific immunogen.
<b>Concentration :</b>	1 mg/ml
<b>Storage Stability :</b>	-15°C to -25°C/1 year(Do not lower than -25°C)
<b>Observed Band :</b>	26kD
<b>Background :</b>	The protein encoded by this gene is a homeobox-containing developmental regulator associated with liver development. The encoded protein binds to the

alpha-fetoprotein (AFP) gene promoter and increases the expression of AFP. This gene is overexpressed in some lung cancers and is linked to poor patient survival, possibly due to its resistance to cisplatin. This gene is aberrantly methylated in pancreatic cancer, deleted in squamous cell lung carcinomas, and acts as a tumor suppressor in esophageal cancer. Mutations in this gene may also be a cause of neural tube defects. [provided by RefSeq, Dec 2015],

<b>Function :</b>	similarity:Belongs to the NK-2 homeobox family.,similarity:Contains 1 homeobox DNA-binding domain.,
<b>Subcellular Location :</b>	nucleus,
<b>Expression :</b>	Brain,Tongue,
<b>Sort :</b>	10876
<b>No4 :</b>	1
<b>Host :</b>	Rabbit
<b>Modifications :</b>	Unmodified

## Products Images



Western blot analysis of NKX28 Antibody. The lane on the right is blocked with the NKX28 peptide.