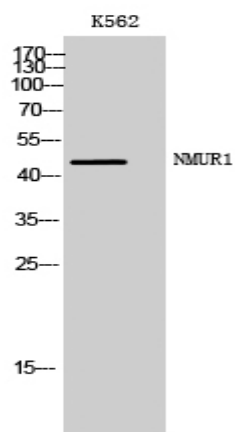


NMUR1 Polyclonal Antibody

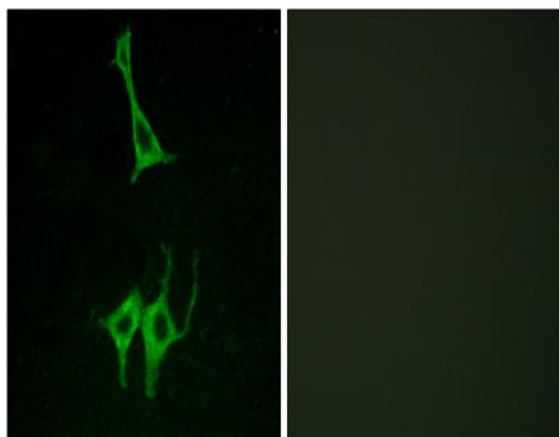
Catalog No :	YT3159
Reactivity :	Human;Rat;Mouse;
Applications :	WB;IF;ELISA
Target :	NMUR1
Fields :	>>Neuroactive ligand-receptor interaction
Gene Name :	NMUR1
Protein Name :	Neuromedin-U receptor 1
Human Gene Id :	10316
Human Swiss Prot No :	Q9HB89
Mouse Swiss Prot No :	O55040
Immunogen :	The antiserum was produced against synthesized peptide derived from human NMUR1. AA range:1-50
Specificity :	NMUR1 Polyclonal Antibody detects endogenous levels of NMUR1 protein.
Formulation :	Liquid in PBS containing 50% glycerol, 0.5% BSA and 0.02% sodium azide.
Source :	Polyclonal, Rabbit,IgG
Dilution :	WB 1:500 - 1:2000. IF 1:200 - 1:1000. ELISA: 1:5000. Not yet tested in other applications.
Purification :	The antibody was affinity-purified from rabbit antiserum by affinity-chromatography using epitope-specific immunogen.
Concentration :	1 mg/ml
Storage Stability :	-15°C to -25°C/1 year(Do not lower than -25°C)

Observed Band :	48kD
Cell Pathway :	Neuroactive ligand-receptor interaction;
Background :	caution:It is uncertain whether Met-1 or Met-24 is the initiator.,function:Receptor for the neuromedin-U and neuromedin-S neuropeptides.,similarity:Belongs to the G-protein coupled receptor 1 family.,tissue specificity:Expressed in greatest abundance in peripheral organs, particularly in elements of the gastrointestinal and urogenital systems with highest levels in testes. In central nervous system structures express levels are much lower than those seen in peripheral organs. Within the CNS, has been detected in highest abundance in the cerebellum, dorsal root ganglia, hippocampus, and spinal cord.,
Function :	caution:It is uncertain whether Met-1 or Met-24 is the initiator.,function:Receptor for the neuromedin-U and neuromedin-S neuropeptides.,similarity:Belongs to the G-protein coupled receptor 1 family.,tissue specificity:Expressed in greatest abundance in peripheral organs, particularly in elements of the gastrointestinal and urogenital systems with highest levels in testes. In central nervous system structures express levels are much lower than those seen in peripheral organs. Within the CNS, has been detected in highest abundance in the cerebellum, dorsal root ganglia, hippocampus, and spinal cord.,
Subcellular Location :	Cell membrane; Multi-pass membrane protein.
Expression :	Expressed in greatest abundance in peripheral organs, particularly in elements of the gastrointestinal and urogenital systems with highest levels in testes. In central nervous system structures express levels are much lower than those seen in peripheral organs. Within the CNS, has been detected in highest abundance in the cerebellum, dorsal root ganglia, hippocampus, and spinal cord.
Sort :	10909
No4 :	1
Host :	Rabbit
Modifications :	Unmodified

Products Images



Western Blot analysis of K562 cells using NMUR1 Polyclonal Antibody



Immunofluorescence analysis of LOVO cells, using NMUR1 Antibody. The picture on the right is blocked with the synthesized peptide.