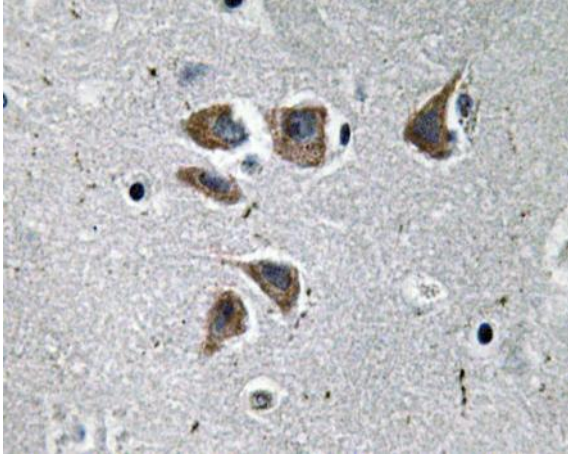


NPY Polyclonal Antibody

| | |
|------------------------------|---|
| Catalog No : | YT3182 |
| Reactivity : | Human;Mouse;Rat |
| Applications : | WB;IHC;IF;ELISA |
| Target : | NPY |
| Fields : | >>cAMP signaling pathway;>>Neuroactive ligand-receptor interaction;>>Adipocytokine signaling pathway;>>Regulation of lipolysis in adipocytes;>>Alcoholism |
| Gene Name : | NPY |
| Protein Name : | Pro-neuropeptide Y |
| Human Gene Id : | 4852 |
| Human Swiss Prot No : | P01303 |
| Mouse Gene Id : | 109648 |
| Mouse Swiss Prot No : | P57774 |
| Rat Gene Id : | 1.00912e+008 |
| Rat Swiss Prot No : | P07808 |
| Immunogen : | The antiserum was produced against synthesized peptide derived from human NPY. AA range:45-94 |
| Specificity : | NPY Polyclonal Antibody detects endogenous levels of NPY protein. |
| Formulation : | Liquid in PBS containing 50% glycerol, 0.5% BSA and 0.02% sodium azide. |
| Source : | Polyclonal, Rabbit,IgG |
| Dilution : | IHC 1:100-500,WB 1:500-2000,ELISA 1:5000-20000. IF 1:50-200 |

| | |
|-------------------------------|--|
| Purification : | The antibody was affinity-purified from rabbit antiserum by affinity-chromatography using epitope-specific immunogen. |
| Concentration : | 1 mg/ml |
| Storage Stability : | -15°C to -25°C/1 year(Do not lower than -25°C) |
| Molecularweight : | 11kD |
| Cell Pathway : | Adipocytokine; |
| Background : | This gene encodes a neuropeptide that is widely expressed in the central nervous system and influences many physiological processes, including cortical excitability, stress response, food intake, circadian rhythms, and cardiovascular function. The neuropeptide functions through G protein-coupled receptors to inhibit adenylyl cyclase, activate mitogen-activated protein kinase (MAPK), regulate intracellular calcium levels, and activate potassium channels. A polymorphism in this gene resulting in a change of leucine 7 to proline in the signal peptide is associated with elevated cholesterol levels, higher alcohol consumption, and may be a risk factor for various metabolic and cardiovascular diseases. The protein also exhibits antimicrobial activity against bacteria and fungi. [provided by RefSeq, Oct 2014], |
| Function : | function:NPY is implicated in the control of feeding and in secretion of gonadotrophin-release hormone.,online information:Neuropeptide Y entry,similarity:Belongs to the NPY family.,tissue specificity:One of the most abundant peptides in the nervous system. Also found in some chromaffin cells of the adrenal medulla., |
| Subcellular Location : | Secreted. Cytoplasmic vesicle, secretory vesicle, neuronal dense core vesicle . |
| Expression : | One of the most abundant peptides in the nervous system. Also found in some chromaffin cells of the adrenal medulla. |
| Tag : | orthogonal |
| Sort : | 10957 |
| No4 : | 1 |
| Host : | Rabbit |
| Modifications : | Unmodified |

Products Images



Immunohistochemistry analysis of NPY antibody in paraffin-embedded human brain tissue.