

## NRBF-2 Polyclonal Antibody

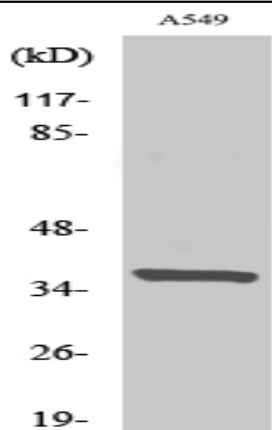
<b>Catalog No :</b>	YT3187
<b>Reactivity :</b>	Human;Mouse;Rat
<b>Applications :</b>	WB;ELISA
<b>Target :</b>	NRBF-2
<b>Fields :</b>	>>Autophagy - animal;>>Alzheimer disease;>>Amyotrophic lateral sclerosis;>>Huntington disease;>>Spinocerebellar ataxia;>>Pathways of neurodegeneration - multiple diseases
<b>Gene Name :</b>	NRBF2
<b>Protein Name :</b>	Nuclear receptor-binding factor 2
<b>Human Gene Id :</b>	29982
<b>Human Swiss Prot No :</b>	Q96F24
<b>Mouse Gene Id :</b>	641340
<b>Mouse Swiss Prot No :</b>	Q8VCQ3
<b>Rat Gene Id :</b>	58839
<b>Rat Swiss Prot No :</b>	Q9QYK3
<b>Immunogen :</b>	The antiserum was produced against synthesized peptide derived from human NRBF2. AA range:140-189
<b>Specificity :</b>	NRBF-2 Polyclonal Antibody detects endogenous levels of NRBF-2 protein.
<b>Formulation :</b>	Liquid in PBS containing 50% glycerol, 0.5% BSA and 0.02% sodium azide.
<b>Source :</b>	Polyclonal, Rabbit,IgG
<b>Dilution :</b>	WB 1:500 - 1:2000. ELISA: 1:20000. Not yet tested in other applications.

---

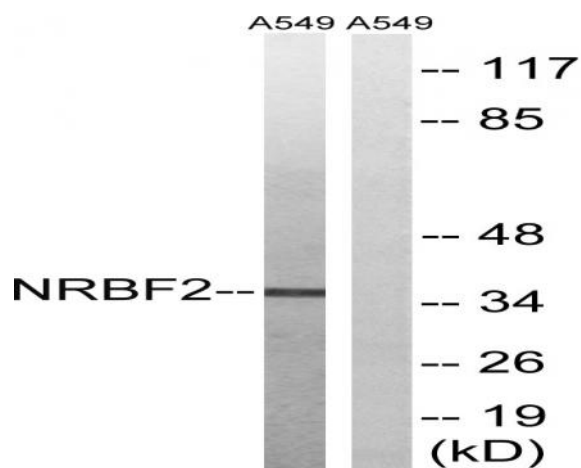
<b>Purification :</b>	The antibody was affinity-purified from rabbit antiserum by affinity-chromatography using epitope-specific immunogen.
<b>Concentration :</b>	1 mg/ml
<b>Storage Stability :</b>	-15°C to -25°C/1 year(Do not lower than -25°C)
<b>Observed Band :</b>	36kD
<b>Background :</b>	function:May modulate transcriptional activation by target nuclear receptors. Can act as transcriptional activator (in vitro).,subunit:Interacts with PPARA, PPARD and PPARG. Interacts with RARA, RARG and RXRA in the presence of bound ligand.,tissue specificity:Detected in keratinocytes, liver and placenta.,
<b>Function :</b>	function:May modulate transcriptional activation by target nuclear receptors. Can act as transcriptional activator (in vitro).,subunit:Interacts with PPARA, PPARD and PPARG. Interacts with RARA, RARG and RXRA in the presence of bound ligand.,tissue specificity:Detected in keratinocytes, liver and placenta.,
<b>Subcellular Location :</b>	Nucleus . Cytoplasm . Cytoplasmic vesicle . Cytoplasmic vesicle, autophagosome .
<b>Expression :</b>	Detected in keratinocytes, liver and placenta (PubMed:15610520). Expressed in a subset of cells in pediatric medulloblastoma (PubMed:18619852).
<b>Sort :</b>	10961
<b>No4 :</b>	1
<b>Host :</b>	Rabbit
<b>Modifications :</b>	Unmodified

---

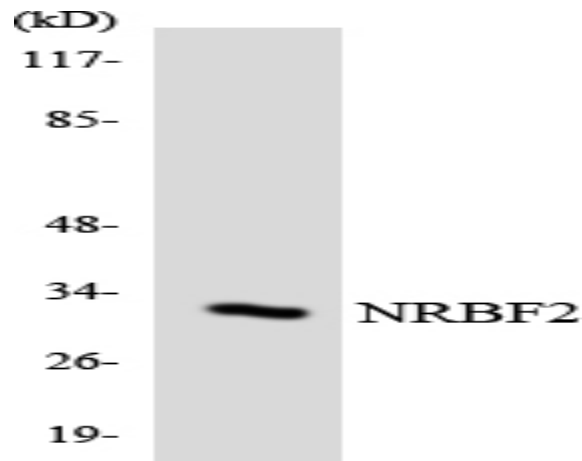
## Products Images



Western Blot analysis of various cells using NRBF-2 Polyclonal Antibody



Western blot analysis of lysates from A549 cells, using NRBF2 Antibody. The lane on the right is blocked with the synthesized peptide.



Western blot analysis of the lysates from RAW264.7 cells using NRBF2 antibody.