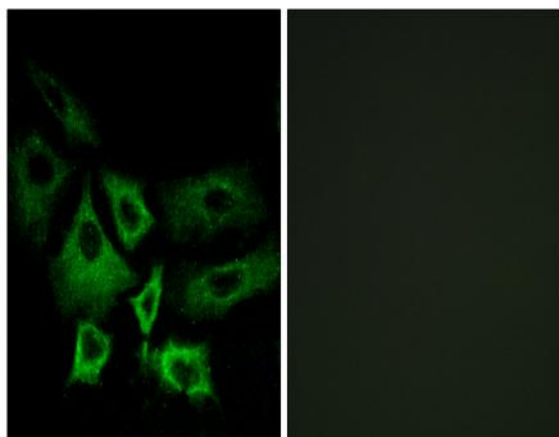


NT5C1A Polyclonal Antibody

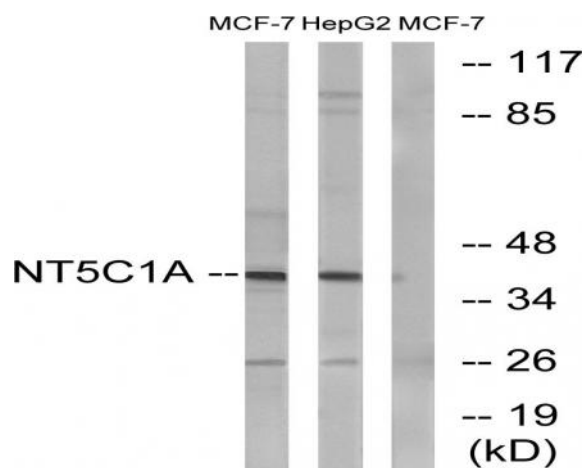
Catalog No :	YT3198
Reactivity :	Human;Mouse
Applications :	WB;IF;ELISA
Target :	NT5C1A
Fields :	>>Purine metabolism;>>Pyrimidine metabolism;>>Nicotinate and nicotinamide metabolism;>>Metabolic pathways;>>Nucleotide metabolism
Gene Name :	NT5C1A
Protein Name :	Cytosolic 5'-nucleotidase 1A
Human Gene Id :	84618
Human Swiss Prot No :	Q9BXI3
Mouse Gene Id :	230718
Mouse Swiss Prot No :	A3KFX0
Immunogen :	The antiserum was produced against synthesized peptide derived from human NT5C1A. AA range:151-200
Specificity :	NT5C1A Polyclonal Antibody detects endogenous levels of NT5C1A protein.
Formulation :	Liquid in PBS containing 50% glycerol, 0.5% BSA and 0.02% sodium azide.
Source :	Polyclonal, Rabbit,IgG
Dilution :	WB 1:500 - 1:2000. IF 1:200 - 1:1000. ELISA: 1:20000. Not yet tested in other applications.
Purification :	The antibody was affinity-purified from rabbit antiserum by affinity-chromatography using epitope-specific immunogen.

Concentration :	1 mg/ml
Storage Stability :	-15°C to -25°C/1 year(Do not lower than -25°C)
Observed Band :	41kD
Cell Pathway :	Purine metabolism;Pyrimidine metabolism;Nicotinate and nicotinamide metabolism;
Background :	Cytosolic nucleotidases, such as NT5C1A, dephosphorylate nucleoside monophosphates (Hunsucker et al., 2001 [PubMed 11133996]).[supplied by OMIM, Mar 2008],
Function :	catalytic activity:A 5'-ribonucleotide + H ₂ O = a ribonucleoside + phosphate.,cofactor:Magnesium.,enzyme regulation:Activated by ADP.,function:Dephosphorylates the 5' and 2'(3')-phosphates of deoxyribonucleotides and has a broad substrate specificity. Helps to regulate adenosine levels in heart during ischemia and hypoxia.,similarity:Belongs to the 5'-nucleotidase type 3 family.,tissue specificity:Highly expressed in skeletal muscle. Detected at intermediate levels in heart, brain, kidney and pancreas.,
Subcellular Location :	Cytoplasm.
Expression :	Highly expressed in skeletal muscle. Detected at intermediate levels in heart, brain, kidney and pancreas.
Sort :	10976
No4 :	1
Host :	Rabbit
Modifications :	Unmodified

Products Images



Immunofluorescence analysis of A549 cells, using NT5C1A Antibody. The picture on the right is blocked with the synthesized peptide.



Western blot analysis of lysates from MCF-7 and HepG2 cells, using NT5C1A Antibody. The lane on the right is blocked with the synthesized peptide.