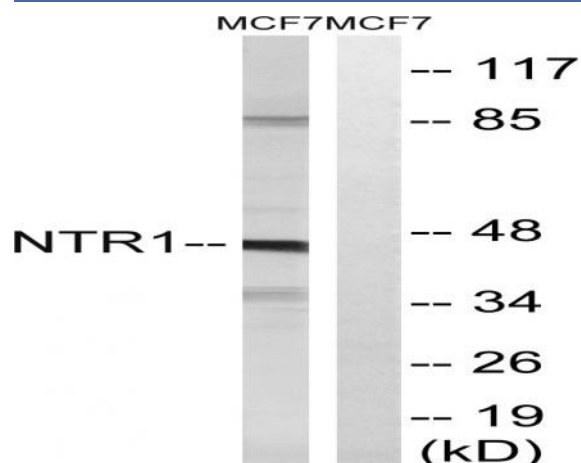


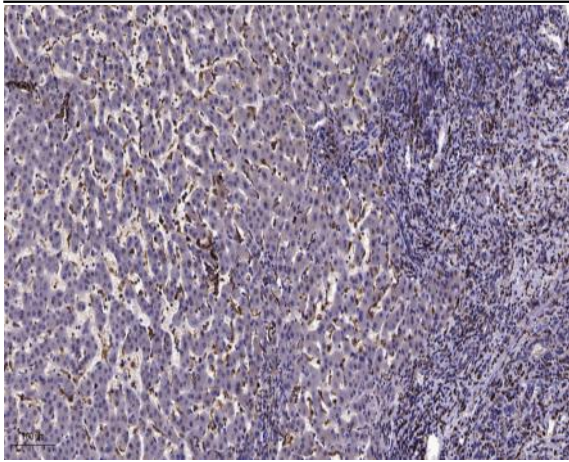
NTR1 Polyclonal Antibody

Catalog No :	YT3203
Reactivity :	Human;Mouse
Applications :	WB;IHC;IF;ELISA
Target :	NTR1
Fields :	>>Calcium signaling pathway;>>Neuroactive ligand-receptor interaction
Gene Name :	NTSR1
Protein Name :	Neurotensin receptor type 1
Human Gene Id :	4923
Human Swiss Prot No :	P30989
Mouse Gene Id :	18216
Mouse Swiss Prot No :	O88319
Immunogen :	The antiserum was produced against synthesized peptide derived from human NTR1. AA range:181-230
Specificity :	NTR1 Polyclonal Antibody detects endogenous levels of NTR1 protein.
Formulation :	Liquid in PBS containing 50% glycerol, 0.5% BSA and 0.02% sodium azide.
Source :	Polyclonal, Rabbit,IgG
Dilution :	WB 1:500 - 1:2000. IHC 1:100 - 1:300. IF 1:200 - 1:1000. ELISA: 1:5000. Not yet tested in other applications.
Purification :	The antibody was affinity-purified from rabbit antiserum by affinity-chromatography using epitope-specific immunogen.
Concentration :	1 mg/ml

Storage Stability :	-15°C to -25°C/1 year(Do not lower than -25°C)
Observed Band :	46kD
Cell Pathway :	Calcium;Neuroactive ligand-receptor interaction;
Background :	Neurotensin receptor 1 belongs to the large superfamily of G-protein coupled receptors. NTSR1 mediates the multiple functions of neurotensin, such as hypotension, hyperglycemia, hypothermia, antinociception, and regulation of intestinal motility and secretion. [provided by RefSeq, Jul 2008],
Function :	function:Receptor for the tridecapeptide neurotensin. It is associated with G proteins that activate a phosphatidylinositol-calcium second messenger system.,online information:Neurotensin receptor entry,similarity:Belongs to the G-protein coupled receptor 1 family.,
Subcellular Location :	Cell membrane ; Multi-pass membrane protein . Membrane raft . Palmitoylation is required for localization at CAV1-enriched membrane rafts. .
Expression :	Expressed in prostate (at protein level). Detected in colon and peripheral blood mononuclear cells. Detected at very low levels in brain.
Sort :	10984
No4 :	1
Host :	Rabbit
Modifications :	Unmodified

Products Images





Immunohistochemical analysis of paraffin-embedded human liver cancer. 1, Antibody was diluted at 1:200(4° overnight). 2, Tris-EDTA,pH9.0 was used for antigen retrieval. 3,Secondary antibody was diluted at 1:200(room temperature, 45min).