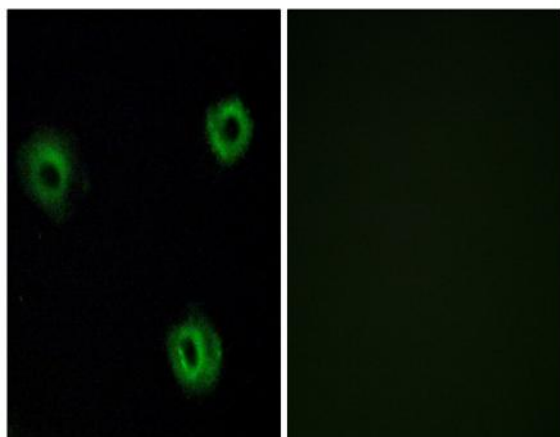


NTR2 Polyclonal Antibody

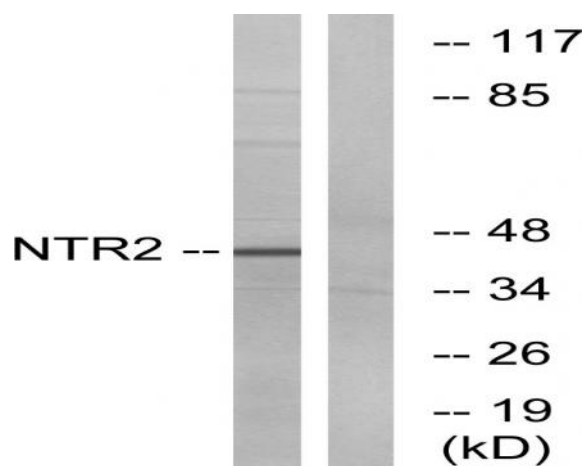
Catalog No :	YT3204
Reactivity :	Human;Mouse;Rat
Applications :	WB;IHC;IF;ELISA
Target :	NTR2
Fields :	>>Neuroactive ligand-receptor interaction
Gene Name :	NTSR2
Protein Name :	Neurotensin receptor type 2
Human Gene Id :	23620
Human Swiss Prot No :	O95665
Mouse Swiss Prot No :	P70310
Rat Gene Id :	64636
Rat Swiss Prot No :	Q63384
Immunogen :	The antiserum was produced against synthesized peptide derived from human NTR2. AA range:151-200
Specificity :	NTR2 Polyclonal Antibody detects endogenous levels of NTR2 protein.
Formulation :	Liquid in PBS containing 50% glycerol, 0.5% BSA and 0.02% sodium azide.
Source :	Polyclonal, Rabbit,IgG
Dilution :	WB 1:500 - 1:2000. IHC 1:100 - 1:300. IF 1:200 - 1:1000. ELISA: 1:40000. Not yet tested in other applications.
Purification :	The antibody was affinity-purified from rabbit antiserum by affinity-chromatography using epitope-specific immunogen.

Concentration :	1 mg/ml
Storage Stability :	-15°C to -25°C/1 year(Do not lower than -25°C)
Observed Band :	45kD
Cell Pathway :	Neuroactive ligand-receptor interaction;
Background :	The protein encoded by this gene belongs to the G protein-coupled receptor family that activate a phosphatidylinositol-calcium second messenger system. Binding and pharmacological studies demonstrate that this receptor binds neurotensin as well as several other ligands already described for neurotensin NT1 receptor. However, unlike NT1 receptor, this gene recognizes, with high affinity, levocabastine, a histamine H1 receptor antagonist previously shown to compete with neurotensin for low-affinity binding sites in brain. These activities suggest that this receptor may be of physiological importance and that a natural agonist for the receptor may exist. [provided by RefSeq, Jul 2008],
Function :	function:Receptor for the tridecapeptide neurotensin. It is associated with G proteins that activate a phosphatidylinositol-calcium second messenger system.,online information:Neurotensin receptor entry,similarity:Belongs to the G-protein coupled receptor 1 family.,
Subcellular Location :	Cell membrane; Multi-pass membrane protein.
Expression :	Expressed in prostate (at protein level).
Sort :	10985
No4 :	1
Host :	Rabbit
Modifications :	Unmodified

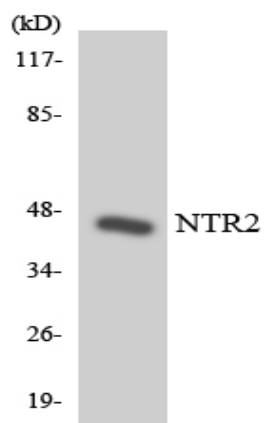
Products Images



Immunofluorescence analysis of A549 cells, using NTR2 Antibody. The picture on the right is blocked with the synthesized peptide.



Western blot analysis of lysates from Jurkat cells, using NTR2 Antibody. The lane on the right is blocked with the synthesized peptide.



Western blot analysis of the lysates from HeLa cells using NTR2 antibody.