

## Nup93 Polyclonal Antibody

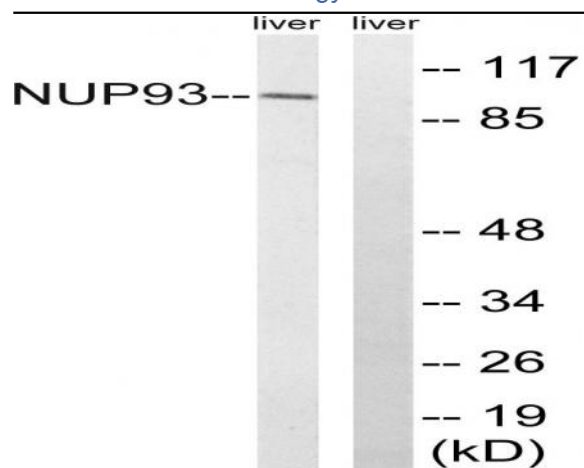
<b>Catalog No :</b>	YT3212
<b>Reactivity :</b>	Human;Mouse;Rat
<b>Applications :</b>	WB;ELISA
<b>Target :</b>	Nup93
<b>Fields :</b>	>>Nucleocytoplasmic transport;>>Amyotrophic lateral sclerosis
<b>Gene Name :</b>	NUP93
<b>Protein Name :</b>	Nuclear pore complex protein Nup93
<b>Human Gene Id :</b>	9688
<b>Human Swiss Prot No :</b>	Q8N1F7
<b>Mouse Gene Id :</b>	71805
<b>Mouse Swiss Prot No :</b>	Q8BJ71
<b>Rat Gene Id :</b>	291874
<b>Rat Swiss Prot No :</b>	Q66HC5
<b>Immunogen :</b>	The antiserum was produced against synthesized peptide derived from human NUP93. AA range:221-270
<b>Specificity :</b>	Nup93 Polyclonal Antibody detects endogenous levels of Nup93 protein.
<b>Formulation :</b>	Liquid in PBS containing 50% glycerol, 0.5% BSA and 0.02% sodium azide.
<b>Source :</b>	Polyclonal, Rabbit,IgG
<b>Dilution :</b>	WB 1:500 - 1:2000. ELISA: 1:40000. Not yet tested in other applications.

---

<b>Purification :</b>	The antibody was affinity-purified from rabbit antiserum by affinity-chromatography using epitope-specific immunogen.
<b>Concentration :</b>	1 mg/ml
<b>Storage Stability :</b>	-15°C to -25°C/1 year(Do not lower than -25°C)
<b>Observed Band :</b>	93kD
<b>Background :</b>	function:Part of the nucleoporin complex; required for correct nuclear pore assembly.,similarity:Belongs to the nucleoporin interacting component (NIC) family.,subcellular location:Localizes at the nuclear basket and at or near the nuclear entry to the gated channel of the pore.,subunit:Component of the p62 complex, a complex composed of NUP62, NUP54. Interacts also with NUP205.,
<b>Function :</b>	function:Part of the nucleoporin complex; required for correct nuclear pore assembly.,similarity:Belongs to the nucleoporin interacting component (NIC) family.,subcellular location:Localizes at the nuclear basket and at or near the nuclear entry to the gated channel of the pore.,subunit:Component of the p62 complex, a complex composed of NUP62, NUP54. Interacts also with NUP205.,
<b>Subcellular Location :</b>	Nucleus membrane ; Peripheral membrane protein . Nucleus, nuclear pore complex . Nucleus envelope . Localizes at the nuclear basket and at or near the nuclear entry to the gated channel of the pore. .
<b>Expression :</b>	Amygdala,Bone marrow,Brain,Epithelium,Skin,
<b>Sort :</b>	11007
<b>No4 :</b>	1
<b>Host :</b>	Rabbit
<b>Modifications :</b>	Unmodified

---

## Products Images



Western blot analysis of lysates from rat liver cells, using NUP93 Antibody. The lane on the right is blocked with the synthesized peptide.