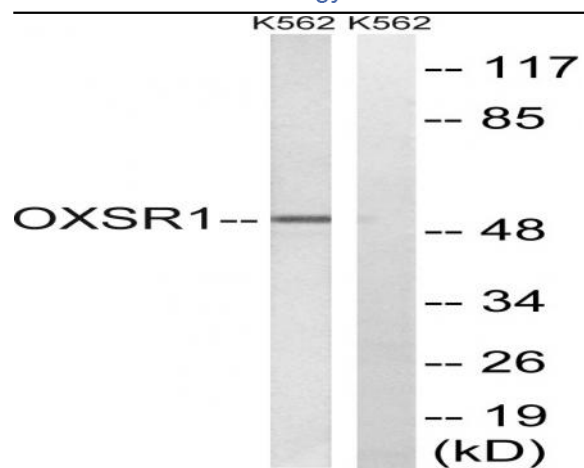


OXR1 Polyclonal Antibody

| | |
|------------------------------|---|
| Catalog No : | YT3482 |
| Reactivity : | Human;Mouse |
| Applications : | WB;ELISA |
| Target : | OXR1 |
| Gene Name : | OXR1 |
| Protein Name : | Serine/threonine-protein kinase OSR1 |
| Human Gene Id : | 9943 |
| Human Swiss Prot No : | O95747 |
| Mouse Gene Id : | 108737 |
| Mouse Swiss Prot No : | Q6P9R2 |
| Immunogen : | The antiserum was produced against synthesized peptide derived from human OXR1. AA range:272-321 |
| Specificity : | OXR1 Polyclonal Antibody detects endogenous levels of OXR1 protein. |
| Formulation : | Liquid in PBS containing 50% glycerol, 0.5% BSA and 0.02% sodium azide. |
| Source : | Polyclonal, Rabbit,IgG |
| Dilution : | WB 1:500 - 1:2000. ELISA: 1:40000. Not yet tested in other applications. |
| Purification : | The antibody was affinity-purified from rabbit antiserum by affinity-chromatography using epitope-specific immunogen. |
| Concentration : | 1 mg/ml |
| Storage Stability : | -15°C to -25°C/1 year(Do not lower than -25°C) |

| | |
|-------------------------------|---|
| Observed Band : | 50kD |
| Background : | The product of this gene belongs to the Ser/Thr protein kinase family of proteins. It regulates downstream kinases in response to environmental stress, and may play a role in regulating the actin cytoskeleton. [provided by RefSeq, Jul 2008], |
| Function : | <p>catalytic activity:ATP + a protein = ADP + a phosphoprotein.,cofactor:Magnesium.,enzyme regulation:By autophosphorylation on threonine.,function:Regulates downstream kinases in response to environmental stress. May also have a function in regulating the actin cytoskeleton.,PTM:Phosphorylated upon DNA damage, probably by ATM or ATR.,similarity:Belongs to the protein kinase superfamily. STE Ser/Thr protein kinase family. STE20 subfamily.,similarity:Contains 1 protein kinase domain.,subunit:Binds to and phosphorylates PAK1. Interacts with chloride channel proteins SLC12A6 isoform 2, SLC12A1 and SLC12A2 but not with SLC12A4 and SLC12A7, possibly establishing sensor/signaling modules that initiate the cellular response to environmental stress. Binds to and phosphorylates RELL1, RELL2 AND RELT.,tissue specificity:Ubiquitously expressed in all tissue examined.,</p> |
| Subcellular Location : | Cytoplasm . |
| Expression : | Ubiquitously expressed in all tissue examined. |
| Sort : | 11345 |
| No4 : | 1 |
| Host : | Rabbit |
| Modifications : | Unmodified |

Products Images



Western blot analysis of lysates from K562 cells, using OXSR1 Antibody. The lane on the right is blocked with the synthesized peptide.