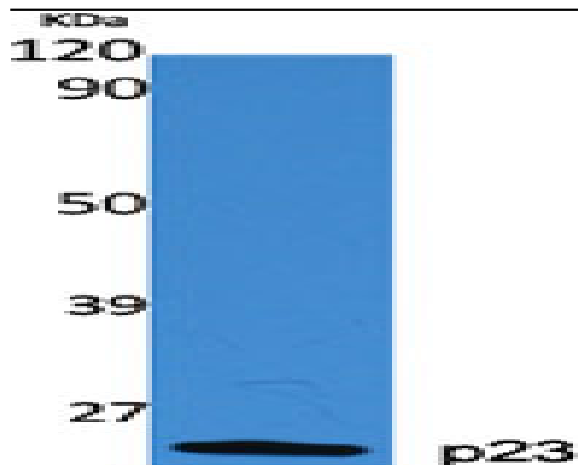


p23 Polyclonal Antibody

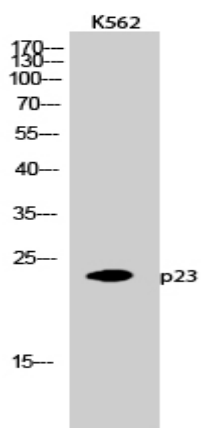
Catalog No :	YT3498
Reactivity :	Human;Mouse;Rat
Applications :	WB;IHC;IF;ELISA
Target :	p23
Fields :	>>Arachidonic acid metabolism;>>Metabolic pathways;>>Chemical carcinogenesis - receptor activation
Gene Name :	PTGES3
Protein Name :	Prostaglandin E synthase 3
Human Gene Id :	10728
Human Swiss Prot No :	Q15185
Mouse Gene Id :	1.00044e+008
Mouse Swiss Prot No :	Q9R0Q7
Rat Gene Id :	362809
Rat Swiss Prot No :	P83868
Immunogen :	The antiserum was produced against synthesized peptide derived from human TEBP. AA range:79-128
Specificity :	p23 Polyclonal Antibody detects endogenous levels of p23 protein.
Formulation :	Liquid in PBS containing 50% glycerol, 0.5% BSA and 0.02% sodium azide.
Source :	Polyclonal, Rabbit,IgG
Dilution :	WB 1:500 - 1:2000. IHC 1:100 - 1:300. ELISA: 1:10000.. IF 1:50-200

Purification :	The antibody was affinity-purified from rabbit antiserum by affinity-chromatography using epitope-specific immunogen.
Concentration :	1 mg/ml
Storage Stability :	-15°C to -25°C/1 year(Do not lower than -25°C)
Observed Band :	24kD
Background :	This gene encodes an enzyme that converts prostaglandin endoperoxide H2 (PGH2) to prostaglandin E2 (PGE2). This protein functions as a co-chaperone with heat shock protein 90 (HSP90), localizing to response elements in DNA and disrupting transcriptional activation complexes. Alternative splicing results in multiple transcript variants. There are multiple pseudogenes of this gene on several different chromosomes. [provided by RefSeq, Feb 2016],
Function :	catalytic activity:(5Z,13E)-(15S)-9-alpha,11-alpha-epidioxy-15-hydroxyprosta-5,13-dienoate = (5Z,13E)-(15S)-11-alpha,15-dihydroxy-9-oxoprosta-5,13-dienoate.,function:Molecular chaperone that localizes to genomic response elements in a hormone-dependent manner and disrupts receptor-mediated transcriptional activation, by promoting disassembly of transcriptional regulatory complexes.,pathway:Lipid metabolism; prostaglandin biosynthesis.,similarity:Belongs to the p23/wos2 family.,similarity:Contains 1 CS domain.,subunit:Binds to telomerase and to the progesterone receptor.,
Subcellular Location :	Cytoplasm .
Expression :	Embryonic kidney,Epithelium,Liver,Lung,Pituitary,Platelet,T-cell,Testis,Uri
Tag :	orthogonal
Sort :	11378
No4 :	1
Host :	Rabbit
Modifications :	Unmodified

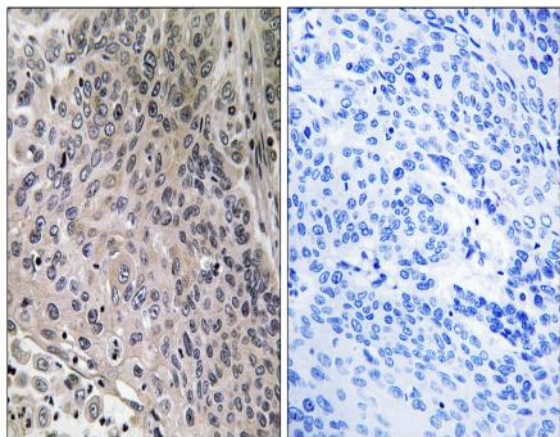
Products Images



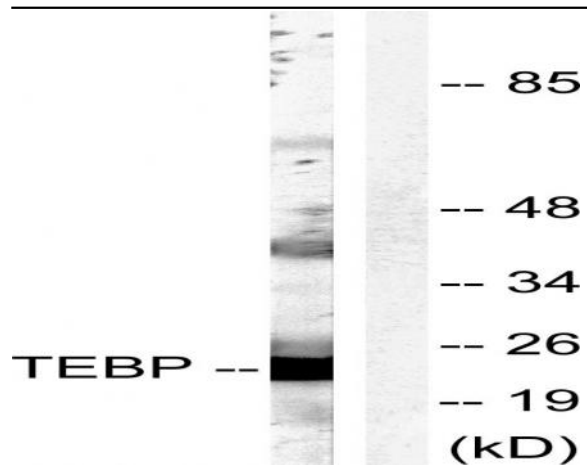
Western Blot analysis of various cells using p23 Polyclonal Antibody diluted at 1:2000



Western Blot analysis of K562 cells using p23 Polyclonal Antibody diluted at 1:2000



Immunohistochemistry analysis of paraffin-embedded human breast carcinoma tissue, using TEBP Antibody. The picture on the right is blocked with the synthesized peptide.



Western blot analysis of lysates from NIH/3T3 cells, treated with EGF 200ng/ml 30', using TEBP Antibody. The lane on the right is blocked with the synthesized peptide.