

Parkin Polyclonal Antibody

Catalog No :	YT3593
Reactivity :	Human;Mouse;Rat;Chicken
Applications :	WB;IHC;IF;ELISA
Target :	Parkin
Fields :	>>Ubiquitin mediated proteolysis;>>Mitophagy - animal;>>Protein processing in endoplasmic reticulum;>>Parkinson disease;>>Amyotrophic lateral sclerosis;>>Pathways of neurodegeneration - multiple diseases
Gene Name :	PARK2
Protein Name :	E3 ubiquitin-protein ligase parkin
Human Gene Id :	5071
Human Swiss Prot No :	O60260
Mouse Swiss Prot No :	Q9WVS6
Immunogen :	The antiserum was produced against synthesized peptide derived from human Parkin. AA range:101-150
Specificity :	Parkin Polyclonal Antibody detects endogenous levels of Parkin protein.
Formulation :	Liquid in PBS containing 50% glycerol, 0.5% BSA and 0.02% sodium azide.
Source :	Polyclonal, Rabbit,IgG
Dilution :	WB 1:500 - 1:2000. IHC 1:100 - 1:300. ELISA: 1:10000.. IF 1:50-200
Purification :	The antibody was affinity-purified from rabbit antiserum by affinity-chromatography using epitope-specific immunogen.
Concentration :	1 mg/ml

Storage Stability : -15°C to -25°C/1 year(Do not lower than -25°C)

Observed Band : 55kD

Cell Pathway : Ubiquitin mediated proteolysis;Parkinson's disease;

Background : The precise function of this gene is unknown; however, the encoded protein is a component of a multiprotein E3 ubiquitin ligase complex that mediates the targeting of substrate proteins for proteasomal degradation. Mutations in this gene are known to cause Parkinson disease and autosomal recessive juvenile Parkinson disease. Alternative splicing of this gene produces multiple transcript variants encoding distinct isoforms. Additional splice variants of this gene have been described but currently lack transcript support. [provided by RefSeq, Jul 2008],

Function : disease:Defects in PARK2 are a cause of Parkinson disease (PD) [MIM:168600]. PD is a complex, multifactorial disorder that typically manifests after the age of 50 years, although early-onset cases (before 50 years) are known. PD generally arises as a sporadic condition but is occasionally inherited as a simple mendelian trait. Although sporadic and familial PD are very similar, inherited forms of the disease usually begin at earlier ages and are associated with atypical clinical features. PD is characterized by bradykinesia, resting tremor, muscular rigidity and postural instability, as well as by a clinically significant response to treatment with levodopa. The pathology of PD involves the loss of dopaminergic neurons in the substantia nigra and the presence of Lewy bodies (intraneuronal accumulations of aggregated proteins), in surviving neurons in various areas of the brain.,disease:D

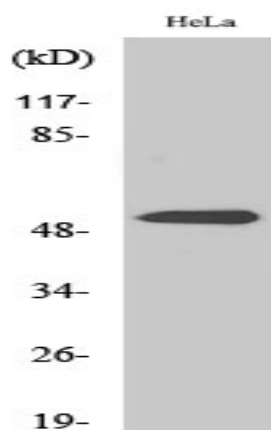
Subcellular Location : Cytoplasm, cytosol . Nucleus . Endoplasmic reticulum . Mitochondrion . Mitochondrion outer membrane . Cell projection, neuron projection . Cell junction, synapse, postsynaptic density . Cell junction, synapse, presynapse . Mainly localizes in the cytosol (PubMed:19029340, PubMed:19229105). Co-localizes with SYT11 in neutrites (PubMed:12925569). Co-localizes with SNCAIP in brainstem Lewy bodies (PubMed:10319893, PubMed:11431533). Translocates to dysfunctional mitochondria that have lost the mitochondrial membrane potential; recruitment to mitochondria is PINK1-dependent (PubMed:24898855, PubMed:18957282, PubMed:19966284, PubMed:23620051). Mitochondrial localization also gradually increases with cellular growth (PubMed:22082830). .

Expression : Highly expressed in the brain including the substantia nigra (PubMed:9560156, PubMed:19501131). Expressed in heart, testis and skeletal muscle (PubMed:9560156). Expression is down-regulated or absent in tumor biopsies, and absent in the brain of PARK2 patients (PubMed:14614460, PubMed:12719539). Overexpression protects dopamine neurons from kainate-mediated apoptosis (PubMed:12628165). Found in serum (at protein level) (PubMed:19501131).

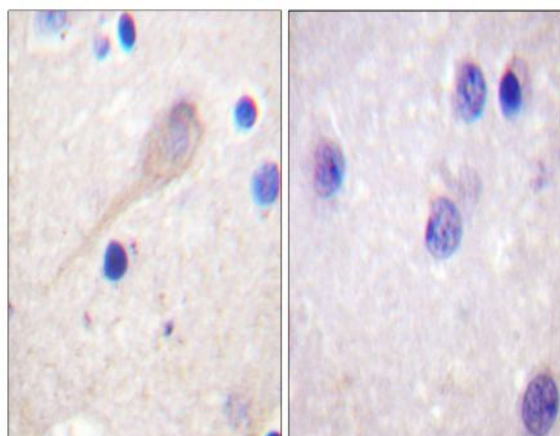
Sort : 1

No4 :	1
Host :	Rabbit
Modifications :	Unmodified

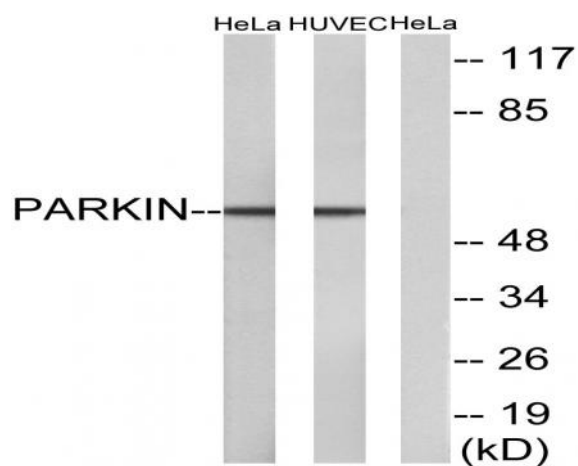
Products Images



Western Blot analysis of various cells using Parkin Polyclonal Antibody



Immunohistochemistry analysis of paraffin-embedded human brain tissue, using Parkin Antibody. The picture on the right is blocked with the synthesized peptide.



Western blot analysis of lysates from HeLa and HUVEC cells, using Parkin Antibody. The lane on the right is blocked with the synthesized peptide.