

Pax-1 Polyclonal Antibody

Catalog No :	YT3599
Reactivity :	Human;Mouse
Applications :	WB;IHC;IF;ELISA
Target :	Pax-1
Gene Name :	PAX1
Protein Name :	Paired box protein Pax-1
Human Gene Id :	5075
Human Swiss Prot No :	P15863
Mouse Swiss Prot No :	P09084
Immunogen :	The antiserum was produced against synthesized peptide derived from human Pax-1. AA range:318-367
Specificity :	Pax-1 Polyclonal Antibody detects endogenous levels of Pax-1 protein.
Formulation :	Liquid in PBS containing 50% glycerol, 0.5% BSA and 0.02% sodium azide.
Source :	Polyclonal, Rabbit,IgG
Dilution :	WB 1:500 - 1:2000. IHC 1:100 - 1:300. ELISA: 1:5000.. IF 1:50-200
Purification :	The antibody was affinity-purified from rabbit antiserum by affinity-chromatography using epitope-specific immunogen.
Concentration :	1 mg/ml
Storage Stability :	-15°C to -25°C/1 year(Do not lower than -25°C)
Observed Band :	36kD

Background : This gene is a member of the paired box (PAX) family of transcription factors. Members of the PAX family typically contain a paired box domain and a paired-type homeodomain. These genes play critical roles during fetal development. This gene plays a role in pattern formation during embryogenesis and may be essential for development of the vertebral column. This gene is silenced by methylation in ovarian and cervical cancers and may be a tumor suppressor gene. Mutations in this gene are also associated with vertebral malformations. [provided by RefSeq, Mar 2012],

Function : function:This protein is a transcriptional activator. It may play a role in the formation of segmented structures of the embryo. May play an important role in the normal development of the vertebral column.,similarity:Contains 1 paired domain.,

Subcellular Location : Nucleus.

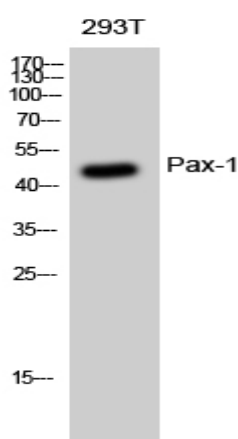
Sort : 11647

No4 : 1

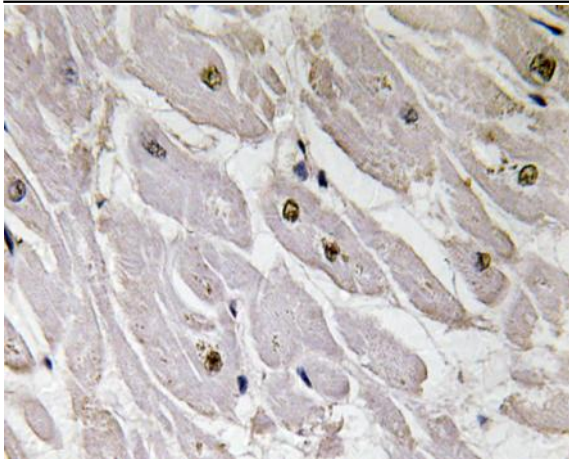
Host : Rabbit

Modifications : Unmodified

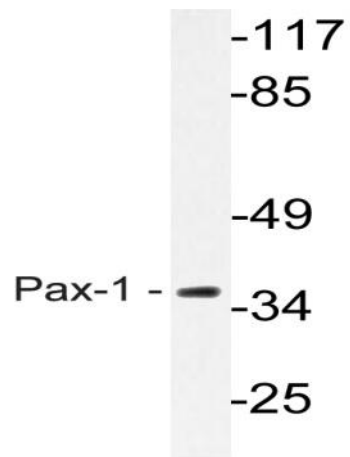
Products Images



Western Blot analysis of 293T cells using Pax-1 Polyclonal Antibody diluted at 1:500 cells nucleus extracted by Minute TM Cytoplasmic and Nuclear Fractionation kit (SC-003, Inventibiotech, MN, USA).



Immunohistochemistry analysis of Pax-1 antibody in paraffin-embedded human heart tissue.



Western blot analysis of lysate from HeLa cells, using Pax-1 antibody.