

PCNA Polyclonal Antibody

Catalog No :	YT3617
Reactivity :	Human;Mouse;Rat;Monkey;Rabbit
Applications :	WB;IHC;IF;ELISA
Target :	PCNA
Fields :	>>DNA replication;>>Base excision repair;>>Nucleotide excision repair;>>Mismatch repair;>>Cell cycle;>>Tight junction;>>Hepatitis B
Gene Name :	PCNA
Protein Name :	Proliferating cell nuclear antigen
Human Gene Id :	5111
Human Swiss Prot No :	P12004
Mouse Gene Id :	18538
Mouse Swiss Prot No :	P17918
Rat Gene Id :	25737
Rat Swiss Prot No :	P04961
Immunogen :	The antiserum was produced against synthesized peptide derived from human PCNA. AA range:61-110
Specificity :	PCNA Polyclonal Antibody detects endogenous levels of PCNA protein.
Formulation :	Liquid in PBS containing 50% glycerol, 0.5% BSA and 0.02% sodium azide.
Source :	Polyclonal, Rabbit,IgG
Dilution :	WB 1:500-2000;IHC 1:100-500;IF ICC 1:100-500;ELISA 1:5000-20000

Purification : The antibody was affinity-purified from rabbit antiserum by affinity-chromatography using epitope-specific immunogen.

Concentration : 1 mg/ml

Storage Stability : -15°C to -25°C/1 year(Do not lower than -25°C)

Observed Band : 30-33kd

Cell Pathway : Protein_Acetylation

Background : The protein encoded by this gene is found in the nucleus and is a cofactor of DNA polymerase delta. The encoded protein acts as a homotrimer and helps increase the processivity of leading strand synthesis during DNA replication. In response to DNA damage, this protein is ubiquitinated and is involved in the RAD6-dependent DNA repair pathway. Two transcript variants encoding the same protein have been found for this gene. Pseudogenes of this gene have been described on chromosome 4 and on the X chromosome. [provided by RefSeq, Jul 2008],

Function : disease:Antibodies are present in sera from patients with systemic lupus erythematosus.,function:This protein is an auxiliary protein of DNA polymerase delta and is involved in the control of eukaryotic DNA replication by increasing the polymerase's processibility during elongation of the leading strand.,online information:PCNA entry,PTM:Upon methyl methanesulfonate-induced DNA damage, mono-ubiquitinated by the UBE2B-RAD18 complex on Lys-164. This induces non-canonical poly-ubiquitination on Lys-164 through 'Lys-63' linkage of ubiquitin moieties by the E2 complex UBE2N-UBE2V2 and the E3 ligases RNF8 and SHPRH, which are required for DNA repair.,similarity:Belongs to the PCNA family.,subunit:Homotrimer. Interacts with KCTD10. Interacts with PPP1R15A (By similarity). Forms a complex with activator 1 heteropentamer in the presence of ATP. Interacts with POLH, POLK, DNMT1, ERCC5/XPG, FEN1, C

Subcellular Location : Nucleus . Colocalizes with CREBBP, EP300 and POLD1 to sites of DNA damage (PubMed:24939902). Forms nuclear foci representing sites of ongoing DNA replication and vary in morphology and number during S phase (PubMed:15543136). Co-localizes with SMARCA5/SNF2H and BAZ1B/WSTF at replication foci during S phase (PubMed:15543136). Together with APEX2, is redistributed in discrete nuclear foci in presence of oxidative DNA damaging agents. .

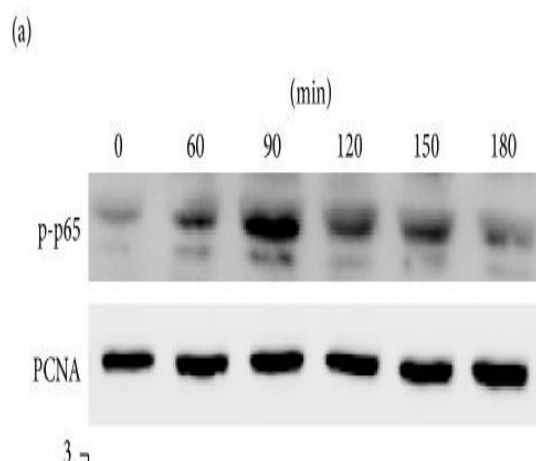
Expression : Bone marrow,Fetal brain cortex,Lung,Placenta,

Tag : orthogonal,hot

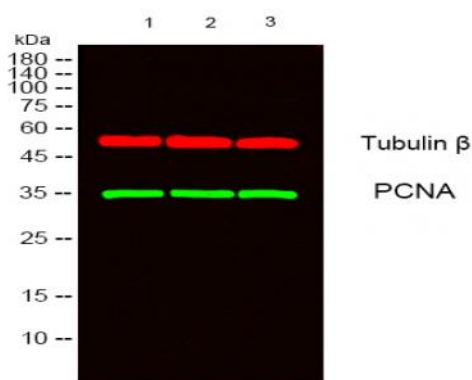
Sort : 1

No1 :	ab29
No2 :	ab29
No4 :	1
Host :	Rabbit
Modifications :	Unmodified

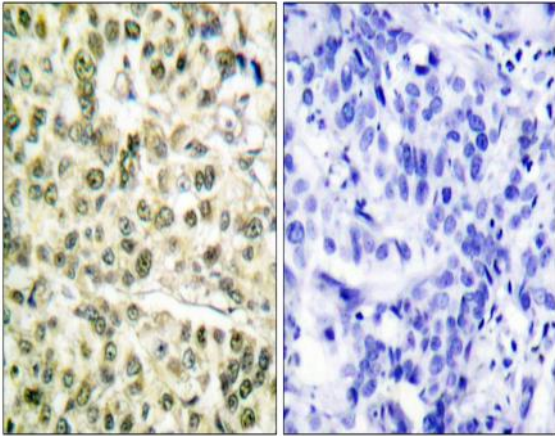
Products Images



(b) Yan, Jinchuan, et al. "CD137 regulates NFATc1 expression in mouse VSMCs through TRAF6/NF- κ B p65 signaling pathway." *Mediators of inflammation* 2015 (2015).



Western blot analysis of lysates from 1) HepG2, 2) HuvEC, 3) COS7 cells, [Green] primary antibody was diluted at 1:1000, 4° over night, secondary antibody (cat:RS23920) was diluted at 1:10000, 37° 1 hour. [Red] Tubulin β Monoclonal Antibody (5G3) (cat:YM3030) antibody was diluted at 1:5000 as loading control, 4° over night, secondary antibody (cat:RS23710) was diluted at 1:10000, 37° 1 hour.



Immunohistochemistry analysis of paraffin-embedded human breast carcinoma tissue, using PCNA Antibody. The picture on the right is blocked with the synthesized peptide.