

**PDLIM5 Polyclonal Antibody**

<b>Catalog No :</b>	YT3647
<b>Reactivity :</b>	Human;Rat;Mouse;
<b>Applications :</b>	WB;IHC
<b>Target :</b>	PDLIM5
<b>Gene Name :</b>	PDLIM5
<b>Protein Name :</b>	PDZ and LIM domain protein 5
<b>Human Gene Id :</b>	10611
<b>Human Swiss Prot No :</b>	Q96HC4
<b>Mouse Swiss Prot No :</b>	Q8CI51
<b>Immunogen :</b>	The antiserum was produced against synthesized peptide derived from human PDLIM5. AA range:208-257
<b>Specificity :</b>	PDLIM5 Polyclonal Antibody detects endogenous levels of PDLIM5 protein.
<b>Formulation :</b>	Liquid in PBS containing 50% glycerol, 0.5% BSA and 0.02% sodium azide.
<b>Source :</b>	Polyclonal, Rabbit,IgG
<b>Dilution :</b>	WB 1:500-2000;IHC 1:50-300
<b>Purification :</b>	The antibody was affinity-purified from rabbit antiserum by affinity-chromatography using epitope-specific immunogen.
<b>Concentration :</b>	1 mg/ml
<b>Storage Stability :</b>	-15°C to -25°C/1 year(Do not lower than -25°C)
<b>Observed Band :</b>	64kD

**Background :** This gene encodes a member of a family of proteins that possess a 100-amino acid PDZ domain at the N terminus and one to three LIM domains at the C-terminus. This family member functions as a scaffold protein that tethers protein kinases to the Z-disk in striated muscles. It is thought to function in cardiomyocyte expansion and in restraining postsynaptic growth of excitatory synapses. Alternative splicing of this gene results in multiple transcript variants. [provided by RefSeq, Jan 2012],

**Function :** caution:The sequence shown here is derived from an Ensembl automatic analysis pipeline and should be considered as preliminary data.,disease:May play a role in genetic susceptibility to schizophrenia. PDLIM5 is commonly increased in the brain of patients with bipolar disorder, schizophrenia, and major depression.,function:May play an important role in the heart development by scaffolding PKC to the Z-disk region.,similarity:Contains 1 PDZ (DHR) domain.,similarity:Contains 3 LIM zinc-binding domains.,subunit:Interacts with various PKC isoforms through the LIM domains. Interacts with actin and alpha-actinin through the PDZ domain.,tissue specificity:Heart and skeletal muscle specific.,

**Subcellular Location :** Cell junction, synapse, postsynaptic density . Cell junction, synapse, presynapse . Cell junction, synapse, postsynapse . Cytoplasm, cytosol . Detected both at presynaptic and postsynaptic sites, exclusively at excitatory synapses, but not inhibitory synapses, in hippocampal neurons. .

**Expression :** Heart and skeletal muscle specific. Expression is commonly increased in the brain of patients with bipolar disorder, schizophrenia, and major depression.

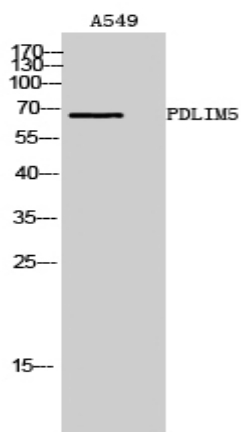
**Sort :** 11790

**No4 :** 1

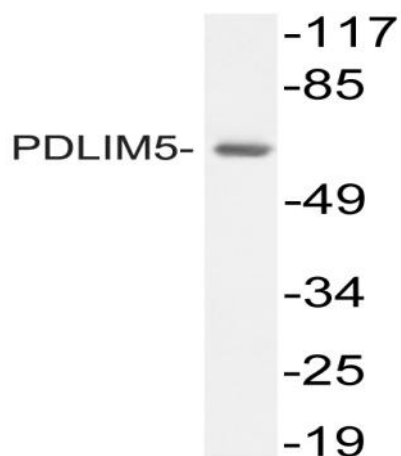
**Host :** Rabbit

**Modifications :** Unmodified

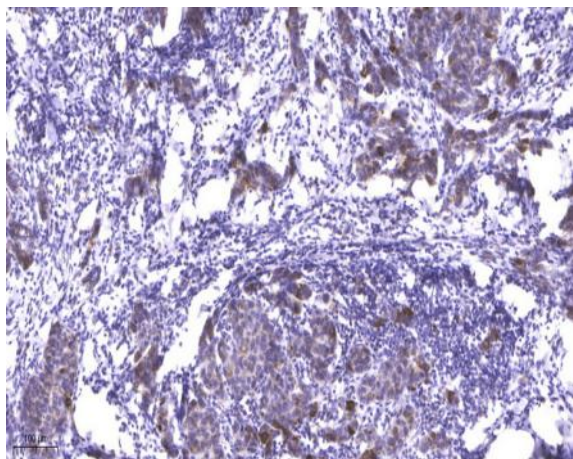
## Products Images



Western Blot analysis of A549 cells using PDLIM5 Polyclonal Antibody



Western blot analysis of lysate from A549 cells, using PDLIM5 antibody.



Immunohistochemical analysis of paraffin-embedded human Breast cancer. 1, Antibody was diluted at 1:200(4° overnight). 2, Tris-EDTA,pH9.0 was used for antigen retrieval. 3,Secondary antibody was diluted at 1:200(room temperature, 45min).