

## PDZK3 Polyclonal Antibody

<b>Catalog No :</b>	YT3651
<b>Reactivity :</b>	Human;Mouse;Rat
<b>Applications :</b>	IHC;IF;ELISA
<b>Target :</b>	PDZK3
<b>Gene Name :</b>	PDZD2
<b>Protein Name :</b>	PDZ domain-containing protein 2
<b>Human Gene Id :</b>	23037
<b>Human Swiss Prot No :</b>	O15018
<b>Rat Gene Id :</b>	65034
<b>Rat Swiss Prot No :</b>	Q9QZR8
<b>Immunogen :</b>	The antiserum was produced against synthesized peptide derived from human PDZD2. AA range:51-100
<b>Specificity :</b>	PDZK3 Polyclonal Antibody detects endogenous levels of PDZK3 protein.
<b>Formulation :</b>	Liquid in PBS containing 50% glycerol, 0.5% BSA and 0.02% sodium azide.
<b>Source :</b>	Polyclonal, Rabbit,IgG
<b>Dilution :</b>	IHC 1:100 - 1:300. IF 1:200 - 1:1000. ELISA: 1:10000. Not yet tested in other applications.
<b>Purification :</b>	The antibody was affinity-purified from rabbit antiserum by affinity-chromatography using epitope-specific immunogen.
<b>Concentration :</b>	1 mg/ml
<b>Storage Stability :</b>	-15°C to -25°C/1 year(Do not lower than -25°C)

**Molecularweight :** 302kD

**Background :** The protein encoded by this gene contains six PDZ domains and shares sequence similarity with pro-interleukin-16 (pro-IL-16). Like pro-IL-16, the encoded protein localizes to the endoplasmic reticulum and is thought to be cleaved by a caspase to produce a secreted peptide containing two PDZ domains. In addition, this gene is upregulated in primary prostate tumors and may be involved in the early stages of prostate tumorigenesis. [provided by RefSeq, Dec 2015],

**Function :** disease:May be associated with the early promotion of prostate tumoregenesis.,PTM:A secreted form is produced by caspase-mediated proteolytic cleavage.,similarity:Contains 1 PDZ (DHR) domain.,similarity:Contains 6 PDZ (DHR) domains.,subcellular location:At cell-cell contacts in lung epithelial cells.,subunit:Interacts with SCN10A, CTNND2 and PKP4.,tissue specificity:Expressed (at protein level) in prostate and many prostate tumors.,

**Subcellular Location :** Nucleus . Cytoplasm . Endoplasmic reticulum . At cell-cell contacts in lung epithelial cells. . ; [Processed PDZ domain-containing protein 2]: Secreted .

**Expression :** Isoform 2 is expressed (at protein level) in prostate and many prostate tumors.

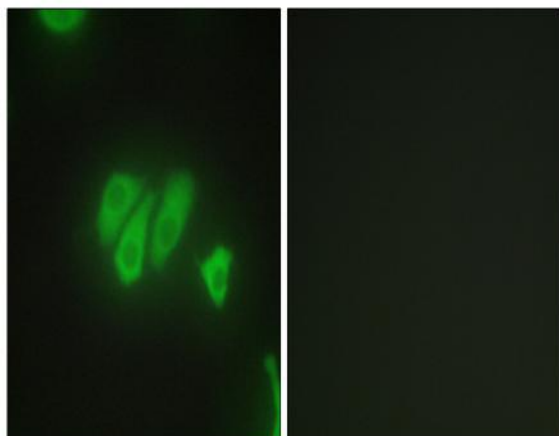
**Sort :** 11798

**No4 :** 1

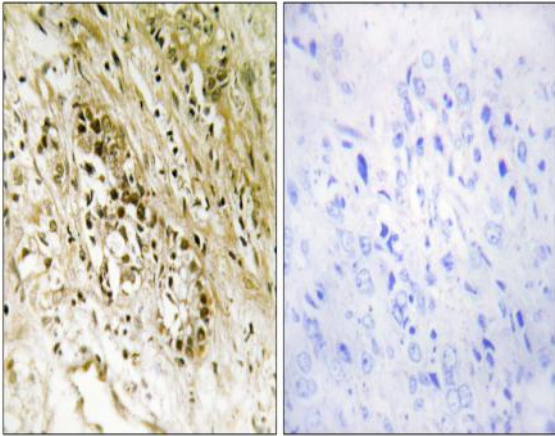
**Host :** Rabbit

**Modifications :** Unmodified

## Products Images



Immunofluorescence analysis of HepG2 cells, using PDZD2 Antibody. The picture on the right is blocked with the synthesized peptide.



Immunohistochemistry analysis of paraffin-embedded human heart tissue, using PDZD2 Antibody. The picture on the right is blocked with the synthesized peptide.