

## PEA3 Polyclonal Antibody

<b>Catalog No :</b>	YT3656
<b>Reactivity :</b>	Human;Mouse
<b>Applications :</b>	IHC;IF;ELISA
<b>Target :</b>	PEA3
<b>Fields :</b>	>>Transcriptional misregulation in cancer
<b>Gene Name :</b>	ETV4
<b>Protein Name :</b>	ETS translocation variant 4
<b>Human Gene Id :</b>	2118
<b>Human Swiss Prot No :</b>	P43268
<b>Mouse Swiss Prot No :</b>	P28322
<b>Immunogen :</b>	The antiserum was produced against synthesized peptide derived from human ETV4. AA range:281-330
<b>Specificity :</b>	PEA3 Polyclonal Antibody detects endogenous levels of PEA3 protein.
<b>Formulation :</b>	Liquid in PBS containing 50% glycerol, 0.5% BSA and 0.02% sodium azide.
<b>Source :</b>	Polyclonal, Rabbit,IgG
<b>Dilution :</b>	IHC 1:100 - 1:300. ELISA: 1:20000.. IF 1:50-200
<b>Purification :</b>	The antibody was affinity-purified from rabbit antiserum by affinity-chromatography using epitope-specific immunogen.
<b>Concentration :</b>	1 mg/ml
<b>Storage Stability :</b>	-15°C to -25°C/1 year(Do not lower than -25°C)

---

**Molecularweight :** 54kD

---

**Background :** function:Transcriptional activator that binds to the enhancer of the adenovirus E1A gene; the core-binding sequence is 5'[AC]GGA[AT]GT-3'.,similarity:Belongs to the ETS family.,similarity:Contains 1 ETS DNA-binding domain.,

---

**Function :** function:Transcriptional activator that binds to the enhancer of the adenovirus E1A gene; the core-binding sequence is 5'[AC]GGA[AT]GT-3'.,similarity:Belongs to the ETS family.,similarity:Contains 1 ETS DNA-binding domain.,

---

**Subcellular Location :** Nucleus .

---

**Expression :** Expressed in keratinocytes.

---

**Sort :** 11806

---

**No4 :** 1

---

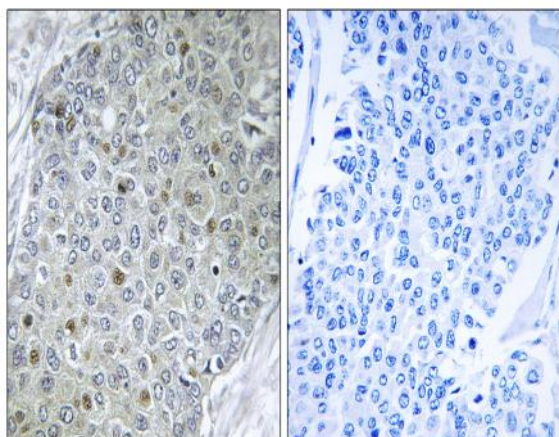
**Host :** Rabbit

---

**Modifications :** Unmodified

---

## Products Images



Immunohistochemistry analysis of paraffin-embedded human breast carcinoma tissue, using ETV4 Antibody. The picture on the right is blocked with the synthesized peptide.