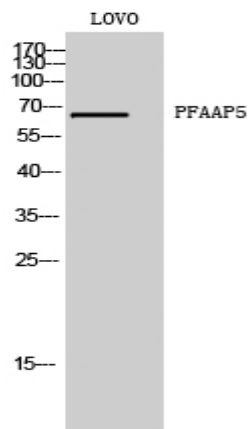


PFAAP5 Polyclonal Antibody

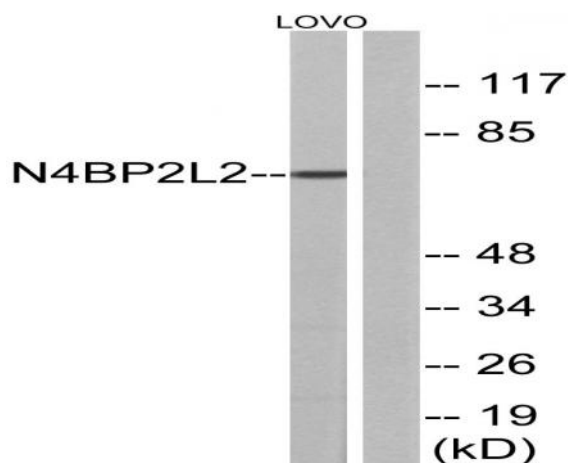
Catalog No :	YT3679
Reactivity :	Human;Mouse
Applications :	WB;ELISA;IHC
Target :	PFAAP5
Gene Name :	N4BP2L2
Protein Name :	NEDD4-binding protein 2-like 2
Human Gene Id :	10443
Human Swiss Prot No :	Q92802
Mouse Gene Id :	381695
Mouse Swiss Prot No :	Q8JZS6
Immunogen :	The antiserum was produced against synthesized peptide derived from human N4BP2L2. AA range:358-407
Specificity :	PFAAP5 Polyclonal Antibody detects endogenous levels of PFAAP5 protein.
Formulation :	Liquid in PBS containing 50% glycerol, 0.5% BSA and 0.02% sodium azide.
Source :	Polyclonal, Rabbit,IgG
Dilution :	WB 1:500-2000;IHC 1:50-300; ELISA 2000-20000
Purification :	The antibody was affinity-purified from rabbit antiserum by affinity-chromatography using epitope-specific immunogen.
Concentration :	1 mg/ml
Storage Stability :	-15°C to -25°C/1 year(Do not lower than -25°C)

Observed Band :	67kD
Background :	PTM:Phosphorylated upon DNA damage, probably by ATM or ATR.,
Function :	PTM:Phosphorylated upon DNA damage, probably by ATM or ATR.,
Subcellular Location :	nucleus,transcriptional repressor complex,extracellular exosome,
Expression :	Colon,Thalamus,
Sort :	11850
No4 :	1
Host :	Rabbit
Modifications :	Unmodified

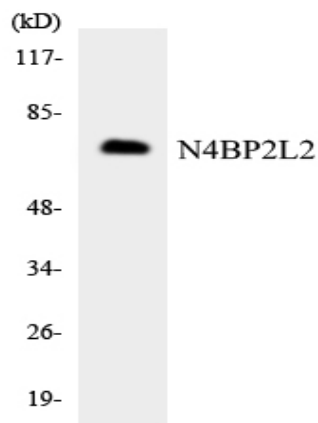
Products Images



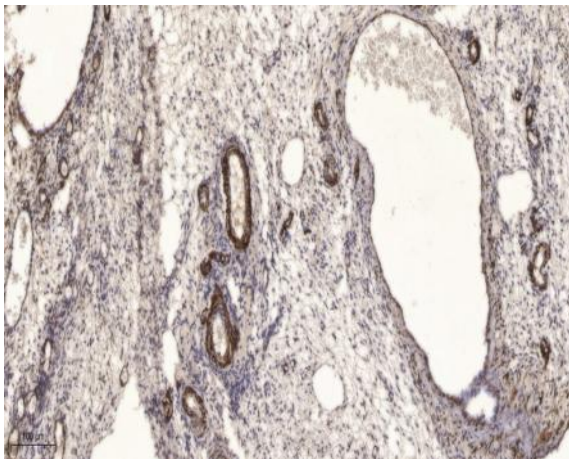
Western Blot analysis of LOVO cells using PFAAP5 Polyclonal Antibody



Western blot analysis of lysates from LOVO cells, using N4BP2L2 Antibody. The lane on the right is blocked with the synthesized peptide.



Western blot analysis of the lysates from K562 cells using N4BP2L2 antibody.



Immunohistochemical analysis of paraffin-embedded human oophoroma. 1, Antibody was diluted at 1:200(4° overnight). 2, Tris-EDTA,pH9.0 was used for antigen retrieval. 3,Secondary antibody was diluted at 1:200(room temperature, 45min).