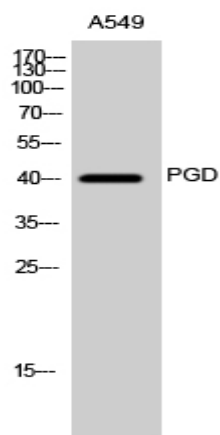


PGD Polyclonal Antibody

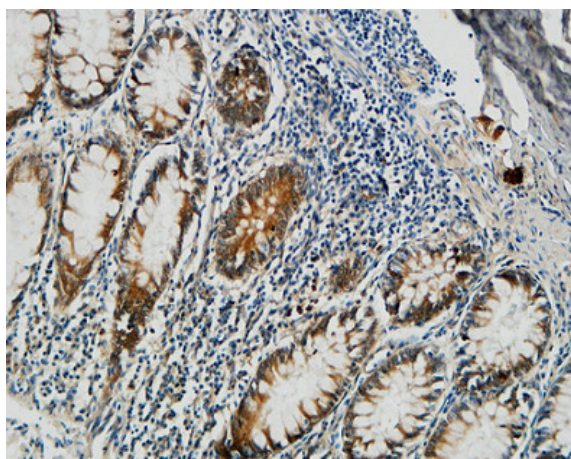
Catalog No :	YT3688
Reactivity :	Human;Mouse;Rat
Applications :	WB;IHC;IF;ELISA
Target :	PGD
Fields :	>>Pentose phosphate pathway;>>Glutathione metabolism;>>Metabolic pathways;>>Carbon metabolism
Gene Name :	PGD
Protein Name :	6-phosphogluconate dehydrogenase decarboxylating
Human Gene Id :	5226
Human Swiss Prot No :	P52209
Mouse Gene Id :	110208
Mouse Swiss Prot No :	Q9DCD0
Rat Gene Id :	1.0036e+008
Rat Swiss Prot No :	P85968
Immunogen :	The antiserum was produced against synthesized peptide derived from human PGD. AA range:71-120
Specificity :	PGD Polyclonal Antibody detects endogenous levels of PGD protein.
Formulation :	Liquid in PBS containing 50% glycerol, 0.5% BSA and 0.02% sodium azide.
Source :	Polyclonal, Rabbit,IgG
Dilution :	IHC: 100-300.WB 1:500 - 1:2000. ELISA: 1:5000.. IF 1:50-200

Purification :	The antibody was affinity-purified from rabbit antiserum by affinity-chromatography using epitope-specific immunogen.
Concentration :	1 mg/ml
Storage Stability :	-15°C to -25°C/1 year(Do not lower than -25°C)
Observed Band :	40kD
Cell Pathway :	Pentose phosphate pathway;Glutathione metabolism;
Background :	6-phosphogluconate dehydrogenase is the second dehydrogenase in the pentose phosphate shunt. Deficiency of this enzyme is generally asymptomatic, and the inheritance of this disorder is autosomal dominant. Hemolysis results from combined deficiency of 6-phosphogluconate dehydrogenase and 6-phosphogluconolactonase suggesting a synergism of the two enzymopathies. Several transcript variants encoding different isoforms have been found for this gene. [provided by RefSeq, Jan 2015],
Function :	catalytic activity:6-phospho-D-gluconate + NADP(+) = D-ribulose 5-phosphate + CO(2) + NADPH.,pathway:Carbohydrate degradation; pentose phosphate pathway; D-ribulose 5-phosphate from D-glucose 6-phosphate (oxidative stage): step 3/3.,similarity:Belongs to the 6-phosphogluconate dehydrogenase family.,subunit:Homodimer.,
Subcellular Location :	Cytoplasm .
Expression :	Heart,Lung,
Tag :	hot
Sort :	11865
No4 :	1
Host :	Rabbit
Modifications :	Unmodified

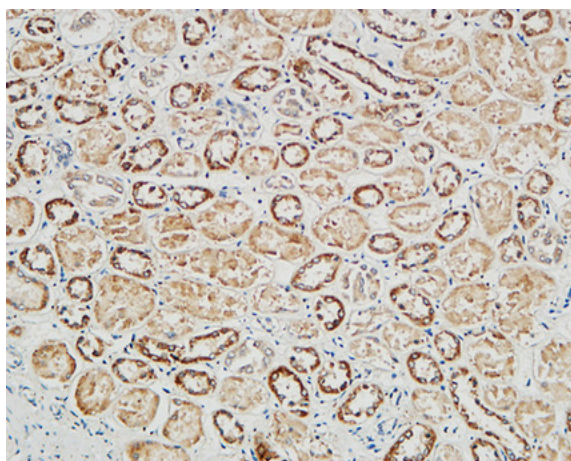
Products Images



Western Blot analysis of A549 cells using PGD Polyclonal Antibody



Immunohistochemical analysis of paraffin-embedded Human colon. 1, Antibody was diluted at 1:100(4° overnight). 2, High-pressure and temperature EDTA, pH8.0 was used for antigen retrieval. 3,Secondary antibody was diluted at 1:200(room temperature, 30min).



Immunohistochemical analysis of paraffin-embedded Human Right kidney. 1, Antibody was diluted at 1:400(4° overnight). 2, High-pressure and temperature EDTA, pH8.0 was used for antigen retrieval. 3,Secondary antibody was diluted at 1:200(room temperature, 30min).