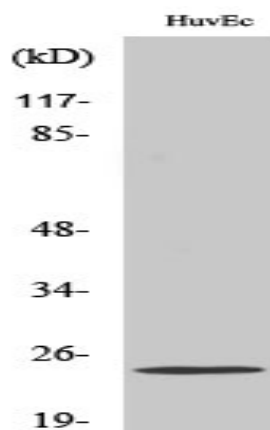


**PGRMC2 Polyclonal Antibody**

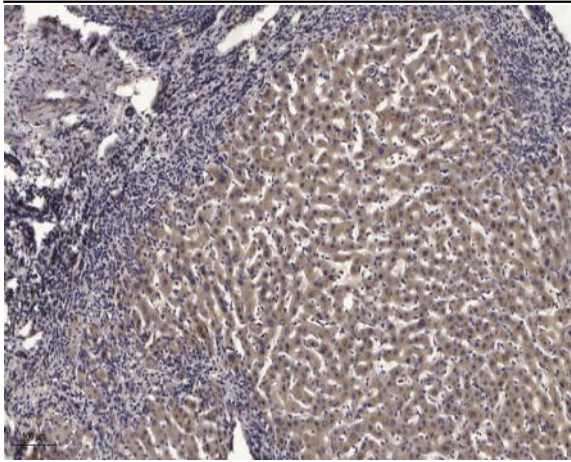
<b>Catalog No :</b>	YT3693
<b>Reactivity :</b>	Human;Mouse;Rat
<b>Applications :</b>	WB;ELISA;IHC
<b>Target :</b>	PGRMC2
<b>Gene Name :</b>	PGRMC2
<b>Protein Name :</b>	Membrane-associated progesterone receptor component 2
<b>Human Gene Id :</b>	10424
<b>Human Swiss Prot No :</b>	O15173
<b>Mouse Gene Id :</b>	70804
<b>Mouse Swiss Prot No :</b>	Q80UU9
<b>Rat Gene Id :</b>	361940
<b>Rat Swiss Prot No :</b>	Q5XIU9
<b>Immunogen :</b>	The antiserum was produced against synthesized peptide derived from human PGRMC2. AA range:174-223
<b>Specificity :</b>	PGRMC2 Polyclonal Antibody detects endogenous levels of PGRMC2 protein.
<b>Formulation :</b>	Liquid in PBS containing 50% glycerol, 0.5% BSA and 0.02% sodium azide.
<b>Source :</b>	Polyclonal, Rabbit,IgG
<b>Dilution :</b>	WB 1:500-2000;IHC 1:50-300; ELISA 2000-20000
<b>Purification :</b>	The antibody was affinity-purified from rabbit antiserum by affinity-chromatography using epitope-specific immunogen.

<b>Concentration :</b>	1 mg/ml
<b>Storage Stability :</b>	-15°C to -25°C/1 year(Do not lower than -25°C)
<b>Observed Band :</b>	25kD
<b>Background :</b>	domain:The cytochrome b5 heme-binding domain lacks the conserved iron-binding His residues at positions 137 and 161.,function:Receptor for steroids .,similarity:Belongs to the cytochrome b5 family. MAPR subfamily.,similarity:Contains 1 cytochrome b5 heme-binding domain.,
<b>Function :</b>	domain:The cytochrome b5 heme-binding domain lacks the conserved iron-binding His residues at positions 137 and 161.,function:Receptor for steroids .,similarity:Belongs to the cytochrome b5 family. MAPR subfamily.,similarity:Contains 1 cytochrome b5 heme-binding domain.,
<b>Subcellular Location :</b>	Membrane ; Single-pass membrane protein . Nucleus envelope . Endoplasmic reticulum .
<b>Expression :</b>	Expressed by endometrial glands and stroma (at protein level).
<b>Sort :</b>	11877
<b>No4 :</b>	1
<b>Host :</b>	Rabbit
<b>Modifications :</b>	Unmodified

## Products Images



Western Blot analysis of various cells using PGRMC2 Polyclonal Antibody diluted at 1:1000



Immunohistochemical analysis of paraffin-embedded human liver cancer. 1, Antibody was diluted at 1:200(4° overnight). 2, Tris-EDTA,pH9.0 was used for antigen retrieval. 3,Secondary antibody was diluted at 1:200(room temperature, 45min).