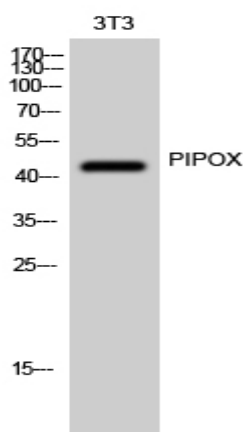


## PIPOX Polyclonal Antibody

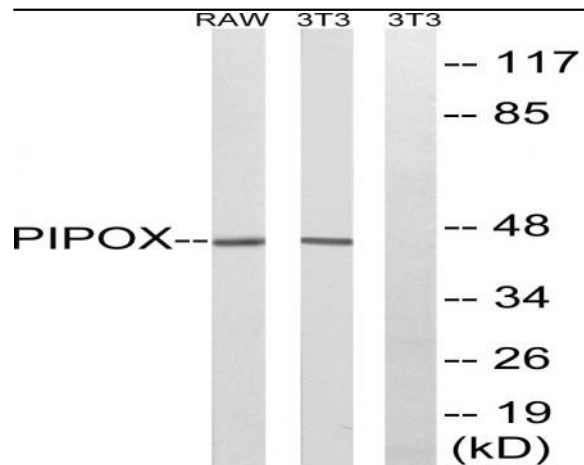
<b>Catalog No :</b>	YT3736
<b>Reactivity :</b>	Human;Mouse
<b>Applications :</b>	WB;ELISA;IHC
<b>Target :</b>	PIPOX
<b>Fields :</b>	>>Glycine, serine and threonine metabolism;>>Lysine degradation;>>Metabolic pathways;>>Peroxisome
<b>Gene Name :</b>	PIPOX
<b>Protein Name :</b>	Peroxisomal sarcosine oxidase
<b>Human Gene Id :</b>	51268
<b>Human Swiss Prot No :</b>	Q9P0Z9
<b>Mouse Swiss Prot No :</b>	Q9D826
<b>Immunogen :</b>	The antiserum was produced against synthesized peptide derived from human PIPOX. AA range:257-306
<b>Specificity :</b>	PIPOX Polyclonal Antibody detects endogenous levels of PIPOX protein.
<b>Formulation :</b>	Liquid in PBS containing 50% glycerol, 0.5% BSA and 0.02% sodium azide.
<b>Source :</b>	Polyclonal, Rabbit,IgG
<b>Dilution :</b>	WB 1:500-2000;IHC 1:50-300; ELISA 2000-20000
<b>Purification :</b>	The antibody was affinity-purified from rabbit antiserum by affinity-chromatography using epitope-specific immunogen.
<b>Concentration :</b>	1 mg/ml
<b>Storage Stability :</b>	-15°C to -25°C/1 year(Do not lower than -25°C)

<b>Observed Band :</b>	44kD
<b>Cell Pathway :</b>	Glycine; serine and threonine metabolism;Lysine degradation;
<b>Background :</b>	catalytic activity:L-pipecolate + O(2) = 2,3,4,5-tetrahydropyridine-2-carboxylate + H(2)O(2).,catalytic activity:Sarcosine + H(2)O + O(2) = glycine + formaldehyde + H(2)O(2).,cofactor:Binds 1 FAD per subunit.,function:Metabolizes sarcosine, L-pipecolic acid and L-proline.,similarity:Belongs to the MSOX/MTOX family.,subunit:Monomer.,
<b>Function :</b>	catalytic activity:L-pipecolate + O(2) = 2,3,4,5-tetrahydropyridine-2-carboxylate + H(2)O(2).,catalytic activity:Sarcosine + H(2)O + O(2) = glycine + formaldehyde + H(2)O(2).,cofactor:Binds 1 FAD per subunit.,function:Metabolizes sarcosine, L-pipecolic acid and L-proline.,similarity:Belongs to the MSOX/MTOX family.,subunit:Monomer.,
<b>Subcellular Location :</b>	Peroxisome .
<b>Expression :</b>	Expressed in the liver and kidney.
<b>Sort :</b>	12717
<b>No4 :</b>	1
<b>Host :</b>	Rabbit
<b>Modifications :</b>	Unmodified

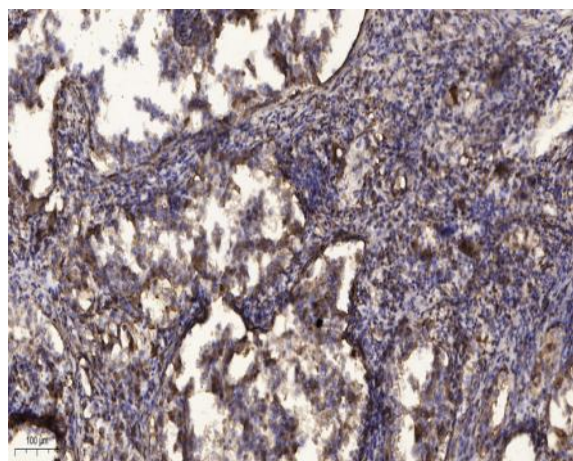
## Products Images



Western Blot analysis of 3T3 cells using PIPOX Polyclonal Antibody



Western blot analysis of lysates from NIH/3T3 and RAW264.7 cells, using PIPOX Antibody. The lane on the right is blocked with the synthesized peptide.



Immunohistochemical analysis of paraffin-embedded human Squamous cell carcinoma of lung. 1, Antibody was diluted at 1:200(4° overnight). 2, Tris-EDTA,pH9.0 was used for antigen retrieval. 3,Secondary antibody was diluted at 1:200(room temperature, 45min).