

PITSLRE Polyclonal Antibody

Catalog No :	YT3739
Reactivity :	Human;Mouse
Applications :	WB;IHC;IF;ELISA
Target :	PITSLRE
Gene Name :	CDK11B
Protein Name :	Cyclin-dependent kinase 11B
Human Gene Id :	984
Human Swiss Prot No :	P21127
Mouse Gene Id :	12537
Mouse Swiss Prot No :	P24788
Immunogen :	The antiserum was produced against synthesized peptide derived from human CDC2L1. AA range:10-59
Specificity :	PITSLRE Polyclonal Antibody detects endogenous levels of PITSLRE protein.
Formulation :	Liquid in PBS containing 50% glycerol, 0.5% BSA and 0.02% sodium azide.
Source :	Polyclonal, Rabbit,IgG
Dilution :	WB 1:500 - 1:2000. IHC 1:100 - 1:300. ELISA: 1:20000.. IF 1:50-200
Purification :	The antibody was affinity-purified from rabbit antiserum by affinity-chromatography using epitope-specific immunogen.
Concentration :	1 mg/ml
Storage Stability :	-15°C to -25°C/1 year(Do not lower than -25°C)

Observed Band : 92kD

Background : This gene encodes a member of the serine/threonine protein kinase family. Members of this kinase family are known to be essential for eukaryotic cell cycle control. Due to a segmental duplication, this gene shares very high sequence identity with a neighboring gene. These two genes are frequently deleted or altered in neuroblastoma. The protein kinase encoded by this gene can be cleaved by caspases and may play a role in cell apoptosis. Alternative splicing results in multiple transcript variants. [provided by RefSeq, Apr 2014],

Function : caution:The sequence shown here is derived from an Ensembl automatic analysis pipeline and should be considered as preliminary data.,

Subcellular Location : Cytoplasm. Nucleus.

Expression : Expressed ubiquitously. Some evidence of isoform-specific tissue distribution.

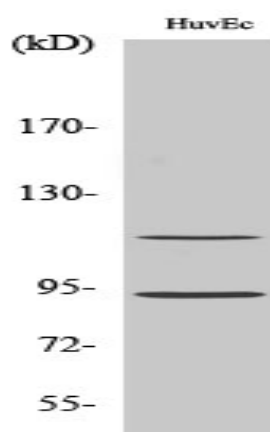
Sort : 12721

No4 : 1

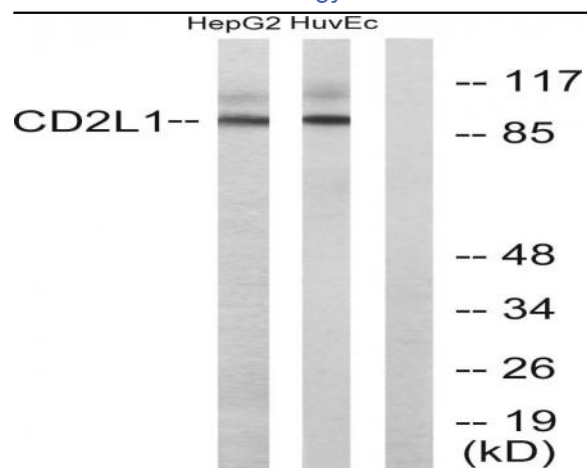
Host : Rabbit

Modifications : Unmodified

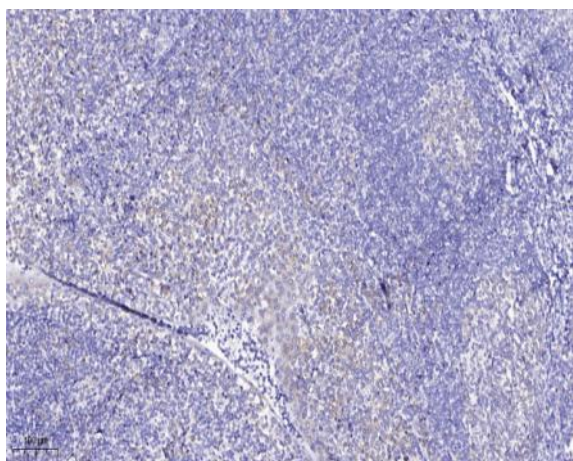
Products Images



Western Blot analysis of various cells using PITSLRE Polyclonal Antibody



Western blot analysis of lysates from HUVEC and HepG2 cells, using CDC2L1 Antibody. The lane on the right is blocked with the synthesized peptide.



Immunohistochemical analysis of paraffin-embedded human tonsil. 1, Antibody was diluted at 1:200(4° overnight). 2, Tris-EDTA,pH9.0 was used for antigen retrieval. 3,Secondary antibody was diluted at 1:200(room temperature, 30min).