

PKA II β reg Polyclonal Antibody

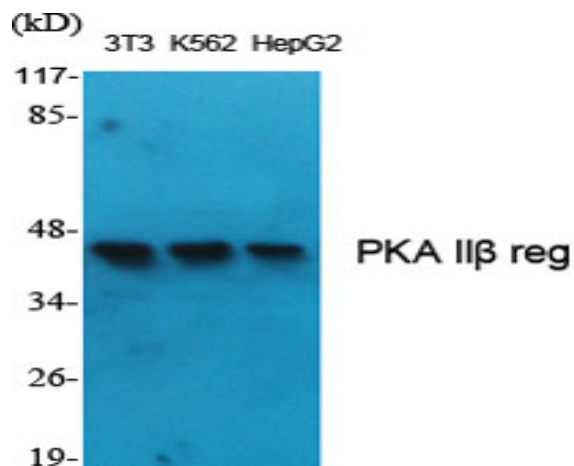
Catalog No :	YT3745
Reactivity :	Human;Mouse;Rat
Applications :	WB;IHC;IF;ELISA
Target :	PKA II β reg
Fields :	>>Insulin signaling pathway
Gene Name :	PRKAR2B
Protein Name :	cAMP-dependent protein kinase type II-beta regulatory subunit
Human Gene Id :	5577
Human Swiss Prot No :	P31323
Mouse Gene Id :	19088
Mouse Swiss Prot No :	P31324
Rat Gene Id :	24679
Rat Swiss Prot No :	P12369
Immunogen :	The antiserum was produced against synthesized peptide derived from human PKA-R2 beta. AA range:79-128
Specificity :	PKA II β reg Polyclonal Antibody detects endogenous levels of PKA II β reg protein.
Formulation :	Liquid in PBS containing 50% glycerol, 0.5% BSA and 0.02% sodium azide.
Source :	Polyclonal, Rabbit,IgG
Dilution :	WB 1:500 - 1:2000. IHC 1:100 - 1:300. ELISA: 1:10000.. IF 1:50-200

Purification :	The antibody was affinity-purified from rabbit antiserum by affinity-chromatography using epitope-specific immunogen.
Concentration :	1 mg/ml
Storage Stability :	-15°C to -25°C/1 year(Do not lower than -25°C)
Observed Band :	46kD
Cell Pathway :	Apoptosis_Inhibition;Apoptosis_Mitochondrial;Apoptosis_Overview;Insulin_Receptor;
Background :	cAMP is a signaling molecule important for a variety of cellular functions. cAMP exerts its effects by activating the cAMP-dependent protein kinase, which transduces the signal through phosphorylation of different target proteins. The inactive kinase holoenzyme is a tetramer composed of two regulatory and two catalytic subunits. cAMP causes the dissociation of the inactive holoenzyme into a dimer of regulatory subunits bound to four cAMP and two free monomeric catalytic subunits. Four different regulatory subunits and three catalytic subunits have been identified in humans. The protein encoded by this gene is one of the regulatory subunits. This subunit can be phosphorylated by the activated catalytic subunit. This subunit has been shown to interact with and suppress the transcriptional activity of the cAMP responsive element binding protein 1 (CREB1) in activ
Function :	function:Type II regulatory chains mediate membrane association by binding to anchoring proteins, including the MAP2 kinase.,PTM:Phosphorylated by the activated catalytic chain.,similarity:Belongs to the cAMP-dependent kinase regulatory chain family.,similarity:Contains 2 cyclic nucleotide-binding domains.,subunit:The inactive form of the enzyme is composed of two regulatory chains and two catalytic chains. Activation by cAMP produces two active catalytic monomers and a regulatory dimer that binds four cAMP molecules.,tissue specificity:Four types of regulatory chains are found: I-alpha, I-beta, II-alpha, and II-beta. Their expression varies among tissues and is in some cases constitutive and in others inducible.,
Subcellular Location :	Cytoplasm . Cell membrane . Colocalizes with PJA2 in the cytoplasm and at the cell membrane.
Expression :	Four types of regulatory chains are found: I-alpha, I-beta, II-alpha, and II-beta. Their expression varies among tissues and is in some cases constitutive and in others inducible.
Sort :	12730
No4 :	1

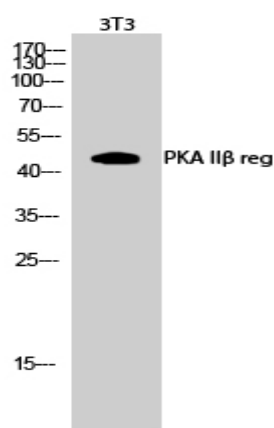
Host : Rabbit

Modifications : Unmodified

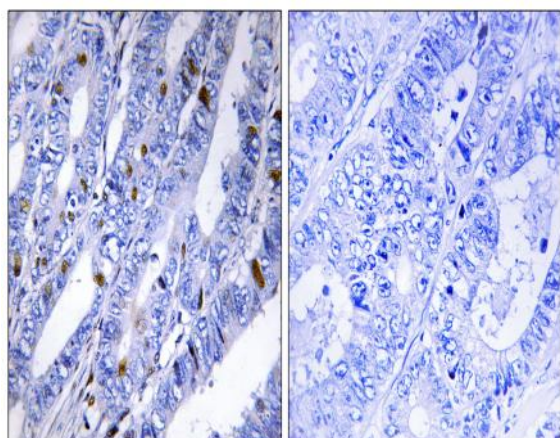
Products Images



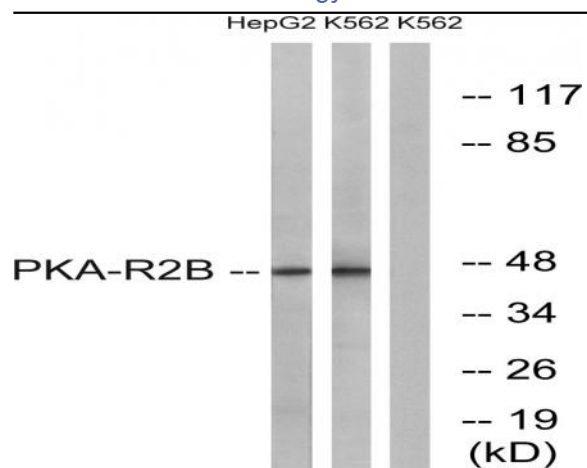
Western Blot analysis of various cells using PKA II β reg Polyclonal Antibody



Western Blot analysis of 3T3 cells using PKA II β reg Polyclonal Antibody



Immunohistochemistry analysis of paraffin-embedded human colon carcinoma tissue, using PKA-R2 beta Antibody. The picture on the right is blocked with the synthesized peptide.



Western blot analysis of lysates from K562 and HepG2 cells, using PKA-R2 beta Antibody. The lane on the right is blocked with the synthesized peptide.