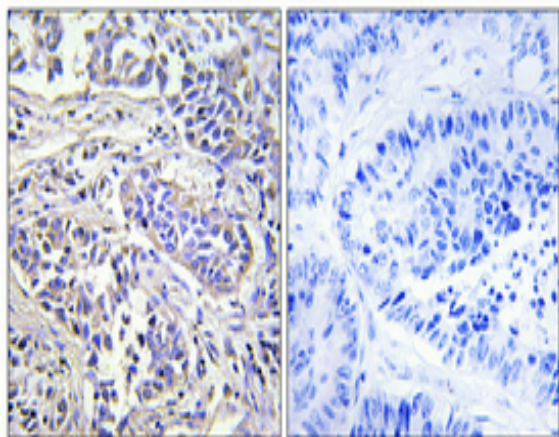


**PLC-XD1 Polyclonal Antibody**

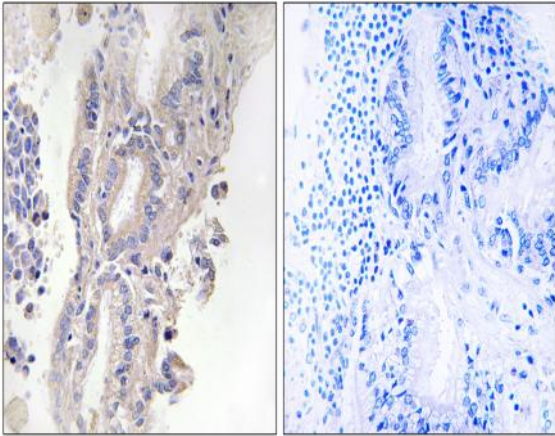
<b>Catalog No :</b>	YT3796
<b>Reactivity :</b>	Human;Mouse
<b>Applications :</b>	IHC;IF;ELISA
<b>Target :</b>	PLC-XD1
<b>Gene Name :</b>	PLCXD1
<b>Protein Name :</b>	PI-PLC X domain-containing protein 1
<b>Human Gene Id :</b>	55344
<b>Human Swiss Prot No :</b>	Q9NUJ7
<b>Mouse Swiss Prot No :</b>	Q8CHS4
<b>Immunogen :</b>	The antiserum was produced against synthesized peptide derived from human PLCXD1. AA range:187-236
<b>Specificity :</b>	PLC-XD1 Polyclonal Antibody detects endogenous levels of PLC-XD1 protein.
<b>Formulation :</b>	Liquid in PBS containing 50% glycerol, 0.5% BSA and 0.02% sodium azide.
<b>Source :</b>	Polyclonal, Rabbit,IgG
<b>Dilution :</b>	IHC 1:100 - 1:300. ELISA: 1:40000.. IF 1:50-200
<b>Purification :</b>	The antibody was affinity-purified from rabbit antiserum by affinity-chromatography using epitope-specific immunogen.
<b>Concentration :</b>	1 mg/ml
<b>Storage Stability :</b>	-15°C to -25°C/1 year(Do not lower than -25°C)
<b>Molecularweight :</b>	37kD

<b>Background :</b>	This gene is the most terminal protein-coding gene in the pseudoautosomal (PAR) region on chromosomes X and Y. Alternate splicing results in multiple transcript variants. [provided by RefSeq, Mar 2010],
<b>Function :</b>	miscellaneous:The gene encoding for this protein is located in the pseudoautosomal region 1 (PAR1) of X and Y chromosomes.,similarity:Contains 1 PI-PLC X-box domain.,
<b>Subcellular Location :</b>	Cytoplasm .
<b>Expression :</b>	Widely expressed.
<b>Sort :</b>	12832
<b>No4 :</b>	1
<b>Host :</b>	Rabbit
<b>Modifications :</b>	Unmodified

## Products Images



Immunohistochemical analysis of paraffin-embedded Human lung cancer. Antibody was diluted at 1:100(4° overnight). High-pressure and temperature Tris-EDTA,pH8.0 was used for antigen retrieval. Negative control (right) obtained from antibody was pre-absorbed by immunogen peptide.



Immunohistochemistry analysis of paraffin-embedded human lung carcinoma, using PLCXD1 Antibody. The picture on the right is blocked with the synthesized peptide.