

## PRX1 Polyclonal Antibody

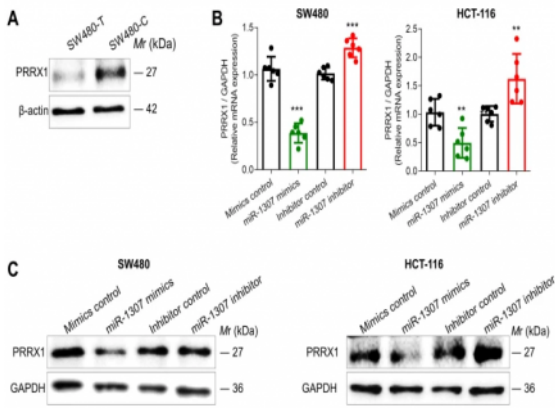
<b>Catalog No :</b>	YT3874
<b>Reactivity :</b>	Human;Mouse;Rat
<b>Applications :</b>	WB;ELISA
<b>Target :</b>	PRX1
<b>Gene Name :</b>	PRRX1
<b>Protein Name :</b>	Paired mesoderm homeobox protein 1
<b>Human Gene Id :</b>	5396
<b>Human Swiss Prot No :</b>	P54821
<b>Mouse Gene Id :</b>	18933
<b>Mouse Swiss Prot No :</b>	P63013
<b>Rat Gene Id :</b>	266813
<b>Rat Swiss Prot No :</b>	P63014
<b>Immunogen :</b>	Synthesized peptide derived from PRX1 . at AA range: 30-110
<b>Specificity :</b>	PRX1 Polyclonal Antibody detects endogenous levels of PRX1 protein.
<b>Formulation :</b>	Liquid in PBS containing 50% glycerol, 0.5% BSA and 0.02% sodium azide.
<b>Source :</b>	Polyclonal, Rabbit,IgG
<b>Dilution :</b>	WB 1:500 - 1:2000. ELISA: 1:10000. Not yet tested in other applications.
<b>Purification :</b>	The antibody was affinity-purified from rabbit antiserum by affinity-chromatography using epitope-specific immunogen.

---

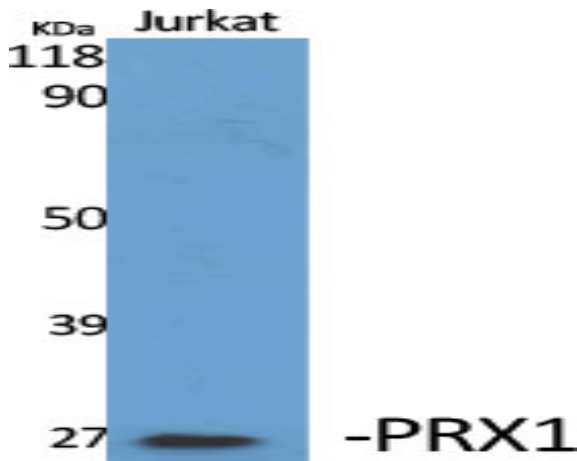
<b>Concentration :</b>	1 mg/ml
<b>Storage Stability :</b>	-15°C to -25°C/1 year(Do not lower than -25°C)
<b>Observed Band :</b>	27kD
<b>Background :</b>	<p>The DNA-associated protein encoded by this gene is a member of the paired family of homeobox proteins localized to the nucleus. The protein functions as a transcription co-activator, enhancing the DNA-binding activity of serum response factor, a protein required for the induction of genes by growth and differentiation factors. The protein regulates muscle creatine kinase, indicating a role in the establishment of diverse mesodermal muscle types. Alternative splicing yields two isoforms that differ in abundance and expression patterns. [provided by RefSeq, Jul 2008],</p>
<b>Function :</b>	<p>function:Acts as a transcriptional regulator of muscle creatine kinase (MCK) and so has a role in the establishment of diverse mesodermal muscle types. The protein binds to an A/T-rich element in the muscle creatine enhancer.,similarity:Belongs to the paired homeobox family.,similarity:Contains 1 homeobox DNA-binding domain.,similarity:Contains 1 OAR domain.,</p>
<b>Subcellular Location :</b>	Nucleus.
<b>Tag :</b>	orthogonal
<b>Sort :</b>	487
<b>No4 :</b>	1
<b>Host :</b>	Rabbit
<b>Modifications :</b>	Unmodified

---

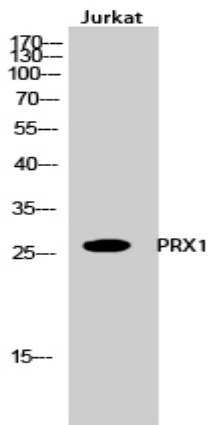
## Products Images

**Fig. 4: The regulatory mechanism of miR-1307-mediated inhibition of PRRX1.**


Yang, M., Liu, X., Meng, F. et al. The rs7911488-T allele promotes the growth and metastasis of colorectal cancer through modulating miR-1307/PRRX1. *Cell Death Dis* 11, 651 (2020).



Western Blot analysis of various cells using PRX1 Polyclonal Antibody cells nucleus extracted by Minute TM Cytoplasmic and Nuclear Fractionation kit (SC-003, Inventbiotech, MN, USA).



Western Blot analysis of Jurkat cells using PRX1 Polyclonal Antibody cells nucleus extracted by Minute TM Cytoplasmic and Nuclear Fractionation kit (SC-003, Inventbiotech, MN, USA).