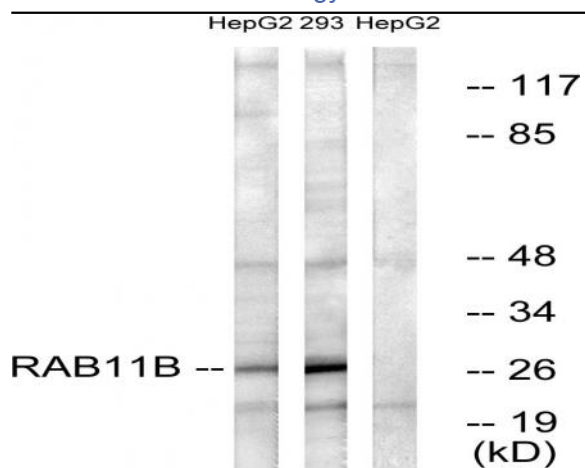


Rab 11B Polyclonal Antibody

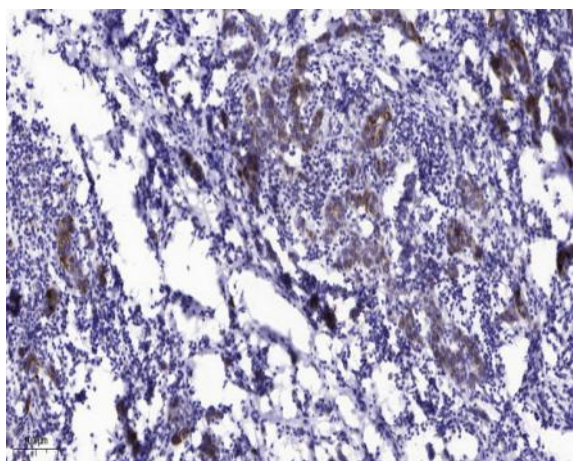
| | |
|------------------------------|--|
| Catalog No : | YT3919 |
| Reactivity : | Human;Mouse;Rat |
| Applications : | WB;IHC |
| Target : | Rab 11B |
| Fields : | >>Endocytosis;>>AMPK signaling pathway;>>Vasopressin-regulated water reabsorption;>>Influenza A |
| Gene Name : | RAB11B |
| Protein Name : | Ras-related protein Rab-11B |
| Human Gene Id : | 9230 |
| Human Swiss Prot No : | Q15907 |
| Mouse Gene Id : | 19326 |
| Mouse Swiss Prot No : | P46638 |
| Rat Gene Id : | 79434 |
| Rat Swiss Prot No : | O35509 |
| Immunogen : | The antiserum was produced against synthesized peptide derived from human RAB11B. AA range:164-213 |
| Specificity : | Rab 11B Polyclonal Antibody detects endogenous levels of Rab 11B protein. |
| Formulation : | Liquid in PBS containing 50% glycerol, 0.5% BSA and 0.02% sodium azide. |
| Source : | Polyclonal, Rabbit,IgG |
| Dilution : | WB 1:500-2000;IHC 1:50-300 |

| | |
|-------------------------------|---|
| Purification : | The antibody was affinity-purified from rabbit antiserum by affinity-chromatography using epitope-specific immunogen. |
| Concentration : | 1 mg/ml |
| Storage Stability : | -15°C to -25°C/1 year(Do not lower than -25°C) |
| Observed Band : | 28kD |
| Cell Pathway : | Endocytosis; |
| Background : | The Ras superfamily of small GTP-binding proteins, which includes the Ras (see MIM 190020), Ral (see MIM 179550), Rho (see MIM 165390), Rap (see MIM 179520), and Rab (see MIM 179508) families, is involved in controlling a diverse set of essential cellular functions. The Rab family, including RAB11B, appears to play a critical role in regulating exocytotic and endocytotic pathways (summary by Zhu et al., 1994 [PubMed 7811277]).[supplied by OMIM, Nov 2010], |
| Function : | function:Possesses GTPase activity.,similarity:Belongs to the small GTPase superfamily. Rab family.,subunit:Interacts with RAB11FIP1, RAB11FIP2, RAB11FIP3 and RAB11FIP4., |
| Subcellular Location : | Recycling endosome membrane ; Lipid-anchor ; Cytoplasmic side . Cytoplasmic vesicle, secretory vesicle, synaptic vesicle membrane ; Lipid-anchor ; Cytoplasmic side . Cytoplasmic vesicle, phagosome membrane ; Lipid-anchor ; Cytoplasmic side . Recruited to phagosomes containing S.aureus. . |
| Expression : | B-cell lymphoma,Brain,Cerebellum,Muscle, |
| Sort : | 13210 |
| No4 : | 1 |
| Host : | Rabbit |
| Modifications : | Unmodified |

Products Images



Western blot analysis of lysates from HepG2 and 293 cells, using RAB11B Antibody. The lane on the right is blocked with the synthesized peptide.



Immunohistochemical analysis of paraffin-embedded human Breast cancer. 1, Antibody was diluted at 1:200(4° overnight). 2, Tris-EDTA,pH9.0 was used for antigen retrieval. 3,Secondary antibody was diluted at 1:200(room temperature, 45min).