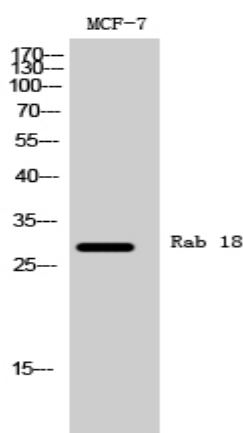


## Rab 18 Polyclonal Antibody

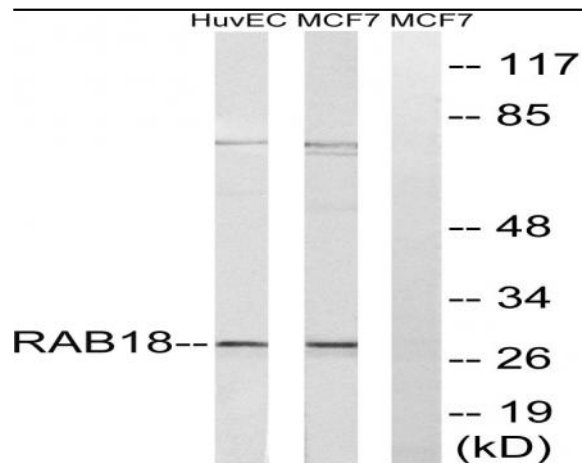
<b>Catalog No :</b>	YT3920
<b>Reactivity :</b>	Human;Mouse;Rat
<b>Applications :</b>	WB;ELISA;IHC
<b>Target :</b>	Rab 18
<b>Gene Name :</b>	RAB18
<b>Protein Name :</b>	Ras-related protein Rab-18
<b>Human Gene Id :</b>	22931
<b>Human Swiss Prot No :</b>	Q9NP72
<b>Mouse Gene Id :</b>	19330
<b>Mouse Swiss Prot No :</b>	P35293
<b>Rat Gene Id :</b>	307039
<b>Rat Swiss Prot No :</b>	Q5EB77
<b>Immunogen :</b>	The antiserum was produced against synthesized peptide derived from human RAB18. AA range:103-152
<b>Specificity :</b>	Rab 18 Polyclonal Antibody detects endogenous levels of Rab 18 protein.
<b>Formulation :</b>	Liquid in PBS containing 50% glycerol, 0.5% BSA and 0.02% sodium azide.
<b>Source :</b>	Polyclonal, Rabbit,IgG
<b>Dilution :</b>	WB 1:500-2000;IHC 1:50-300; ELISA 2000-20000
<b>Purification :</b>	The antibody was affinity-purified from rabbit antiserum by affinity-chromatography using epitope-specific immunogen.

<b>Concentration :</b>	1 mg/ml
<b>Storage Stability :</b>	-15°C to -25°C/1 year(Do not lower than -25°C)
<b>Observed Band :</b>	28kD
<b>Background :</b>	The protein encoded by this gene is a member of a family of Ras-related small GTPases that regulate membrane trafficking in organelles and transport vesicles. Knockdown studies in zebrafish suggest that this protein may have a role in eye and brain development. Mutations in this gene are associated with Warburg micro syndrome type 3. Alternatively spliced transcript variants have been found for this gene. [provided by RefSeq, Jan 2012],
<b>Function :</b>	function:Plays a role in apical endocytosis/recycling. May be implicated in transport between the plasma membrane and early endosomes.,similarity:Belongs to the small GTPase superfamily. Rab family.,tissue specificity:Ubiquitous.,
<b>Subcellular Location :</b>	Apical cell membrane . Lipid droplet .
<b>Expression :</b>	Ubiquitous.
<b>Sort :</b>	13211
<b>No4 :</b>	1
<b>Host :</b>	Rabbit
<b>Modifications :</b>	Unmodified

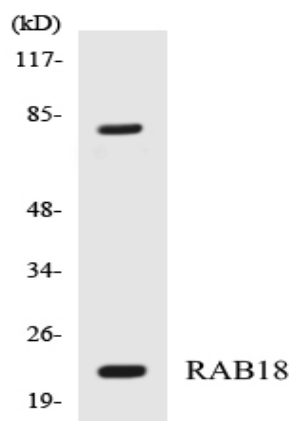
## Products Images



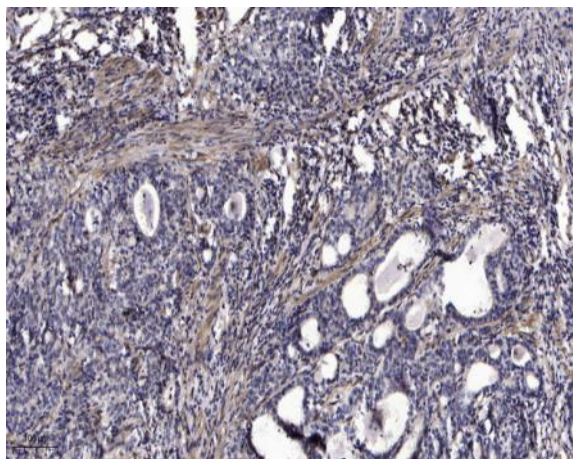
Western Blot analysis of MCF-7 cells using Rab 18 Polyclonal Antibody



Western blot analysis of lysates from MCF-7 and HUVEC cells, using RAB18 Antibody. The lane on the right is blocked with the synthesized peptide.



Western blot analysis of the lysates from HepG2 cells using RAB18 antibody.



Immunohistochemical analysis of paraffin-embedded human Gastric adenocarcinoma. 1, Antibody was diluted at 1:200(4° overnight). 2, Tris-EDTA,pH9.0 was used for antigen retrieval. 3,Secondary antibody was diluted at 1:200(room temperature, 45min).