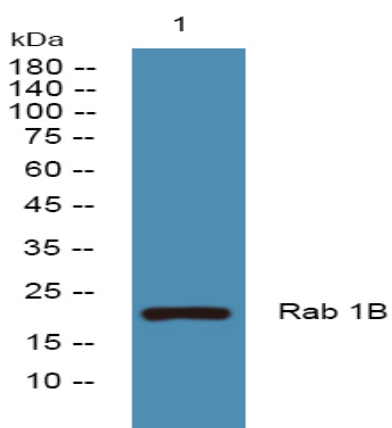


Rab 1B Polyclonal Antibody

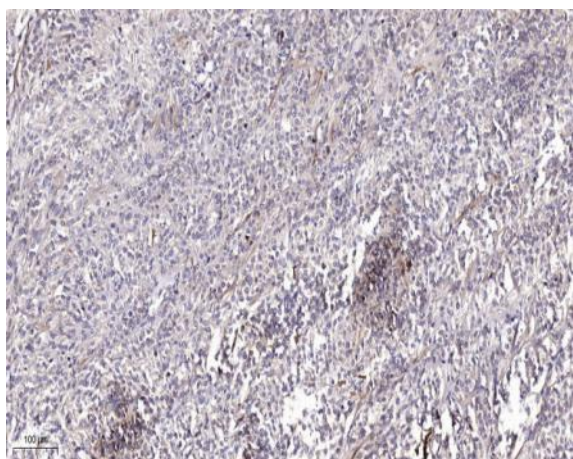
Catalog No :	YT3921
Reactivity :	Human;Mouse;Rat
Applications :	WB;ELISA;IHC
Target :	Rab 1B
Fields :	>>Legionellosis
Gene Name :	RAB1B
Protein Name :	Ras-related protein Rab-1B
Human Gene Id :	81876
Human Swiss Prot No :	Q9H0U4
Mouse Gene Id :	76308
Mouse Swiss Prot No :	Q9D1G1
Rat Swiss Prot No :	P10536
Immunogen :	Synthesized peptide derived from Rab 1B . at AA range: 50-130
Specificity :	Rab 1B Polyclonal Antibody detects endogenous levels of Rab 1B protein.
Formulation :	Liquid in PBS containing 50% glycerol, 0.5% BSA and 0.02% sodium azide.
Source :	Polyclonal, Rabbit,IgG
Dilution :	WB 1:500-2000;IHC 1:50-300; ELISA 2000-20000
Purification :	The antibody was affinity-purified from rabbit antiserum by affinity-chromatography using epitope-specific immunogen.

Concentration :	1 mg/ml
Storage Stability :	-15°C to -25°C/1 year(Do not lower than -25°C)
Observed Band :	22kD
Background :	Members of the RAB protein family, such as RAB1B, are low molecular mass monomeric GTPases localized on the cytoplasmic surfaces of distinct membrane-bound organelles. RAB1B functions in the early secretory pathway and is essential for vesicle transport between the endoplasmic reticulum (ER) and Golgi (Chen et al., 1997 [PubMed 9030196]; Alvarez et al., 2003 [PubMed 12802079]).[supplied by OMIM, Jan 2009],
Function :	function:Protein transport. Regulates vesicular transport between the endoplasmic reticulum and successive Golgi compartments.,miscellaneous:Rab-1B binds GTP and GDP and possesses intrinsic GTPase activity.,PTM:Prenylated; by GGTase II, only after interaction of the substrate with Rab escort protein 1 (REP1).,similarity:Belongs to the small GTPase superfamily. Rab family.,subcellular location:Targeted by REP1 to membranes of specific subcellular compartments including endoplasmic reticulum, Golgi apparatus, and intermediate vesicles between these two compartments. In the GDP-form, colocalizes with GDI in the cytoplasm.,subunit:Interacts with MICAL1, MICAL2 and MICAL3. Interacts with GDI1; the interaction requires the GDP-bound state. Interacts with CHM/REP1; the interaction requires the GDP-bound form and is necessary for prenylation by GGTase II.,
Subcellular Location :	Cytoplasm . Membrane ; Lipid-anchor ; Cytoplasmic side . Preautophagosomal structure membrane ; Lipid-anchor ; Cytoplasmic side . Cytoplasm, perinuclear region . Targeted by REP1 to membranes of specific subcellular compartments including endoplasmic reticulum, Golgi apparatus, and intermediate vesicles between these two compartments (PubMed:11389151). In the GDP-form, colocalizes with GDI in the cytoplasm (PubMed:11389151). Co-localizes with MTMR6 to the endoplasmic reticulum-Golgi intermediate compartment and to the peri-Golgi region (By similarity). .
Expression :	B-cell lymphoma,Brain,Muscle,Pancreas,
Sort :	13212
No4 :	1
Host :	Rabbit
Modifications :	Unmodified

Products Images



Western blot analysis of lysates from SH-SY5Y cells, primary antibody was diluted at 1:1000, 4° over night



Immunohistochemical analysis of paraffin-embedded human Colon cancer. 1, Antibody was diluted at 1:200(4° overnight). 2, Tris-EDTA,pH9.0 was used for antigen retrieval. 3,Secondary antibody was diluted at 1:200(room temperature, 45min).