

## Rab 2B Polyclonal Antibody

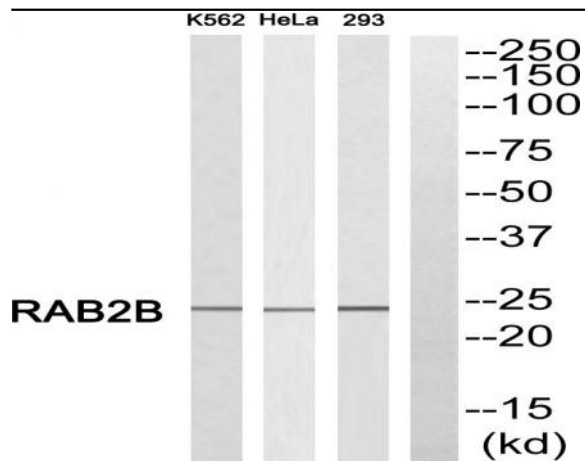
|                              |   |
|------------------------------|---|
| <b>Catalog No :</b>          | YT3925  |
| <b>Reactivity :</b>          | Human;Mouse;Rat   |
| <b>Applications :</b>        | WB;ELISA;IHC  |
| <b>Target :</b>              | Rab 2B  |
| <b>Gene Name :</b>           | RAB2B   |
| <b>Protein Name :</b>        | Ras-related protein Rab-2B  |
| <b>Human Gene Id :</b>       | 84932   |
| <b>Human Swiss Prot No :</b> | Q8WUD1  |
| <b>Mouse Gene Id :</b>       | 76338   |
| <b>Mouse Swiss Prot No :</b> | P59279  |
| <b>Immunogen :</b>           | The antiserum was produced against synthesized peptide derived from human RAB2B. AA range:103-152                     |
| <b>Specificity :</b>         | Rab 2B Polyclonal Antibody detects endogenous levels of Rab 2B protein.   |
| <b>Formulation :</b>         | Liquid in PBS containing 50% glycerol, 0.5% BSA and 0.02% sodium azide.   |
| <b>Source :</b>              | Polyclonal, Rabbit,IgG  |
| <b>Dilution :</b>            | WB 1:500-2000;IHC 1:50-300; ELISA 2000-20000  |
| <b>Purification :</b>        | The antibody was affinity-purified from rabbit antiserum by affinity-chromatography using epitope-specific immunogen. |
| <b>Concentration :</b>       | 1 mg/ml   |
| <b>Storage Stability :</b>   | -15°C to -25°C/1 year(Do not lower than -25°C)  |

---

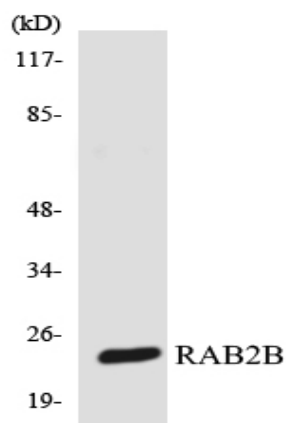
|                               |   |
|-------------------------------|---|
| <b>Observed Band :</b>        | 24kD  |
| <b>Background :</b>           | Members of the Rab protein family are nontransforming monomeric GTP-binding proteins of the Ras superfamily that contain 4 highly conserved regions involved in GTP binding and hydrolysis. Rab proteins are prenylated, membrane-bound proteins involved in vesicular fusion and trafficking; see MIM 179508.[supplied by OMIM, Apr 2006],   |
| <b>Function :</b>             | function:Required for protein transport from the endoplasmic reticulum to the Golgi complex .,similarity:Belongs to the small GTPase superfamily. Rab family.,tissue specificity:Expressed in kidney, prostate, lung, liver, thymus, colon, pancreas, and skeletal muscle, and low levels in placenta. Not detected in heart, brain, spleen, testis, ovary, small intestine and leukocyte., |
| <b>Subcellular Location :</b> | Cell membrane ; Lipid-anchor ; Cytoplasmic side . Endoplasmic reticulum membrane ; Lipid-anchor . Golgi apparatus membrane ; Lipid-anchor . Cytoplasmic vesicle, secretory vesicle, acrosome . Localized in the Golgi apparatus in the round spermatids and in the acrosome in the elongating spermatid. .  |
| <b>Expression :</b>           | Expressed in kidney, prostate, lung, liver, thymus, colon, pancreas, and skeletal muscle, and low levels in placenta. Not detected in heart, brain, spleen, testis, ovary, small intestine and leukocyte.   |
| <b>Tag :</b>                  | hot   |
| <b>Sort :</b>                 | 13220   |
| <b>No4 :</b>                  | 1   |
| <b>Host :</b>                 | Rabbit  |
| <b>Modifications :</b>        | Unmodified  |

---

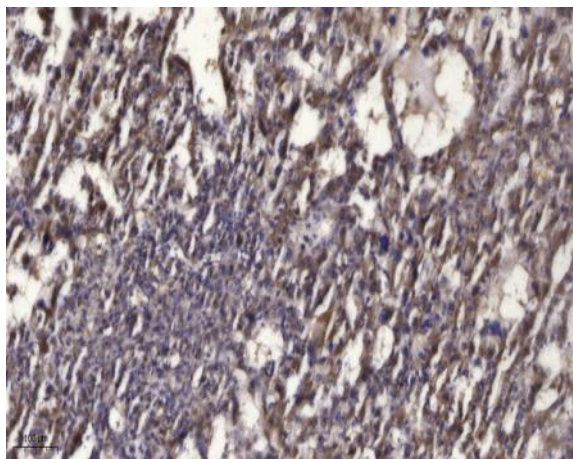
## Products Images



Western blot analysis of RAB2B Antibody. The lane on the right is blocked with the RAB2B peptide.



Western blot analysis of the lysates from 293 cells using RAB2B antibody.



Immunohistochemical analysis of paraffin-embedded human liver cancer. 1, Antibody was diluted at 1:200(4° overnight). 2, Tris-EDTA,pH9.0 was used for antigen retrieval. 3,Secondary antibody was diluted at 1:200(room temperature, 45min).