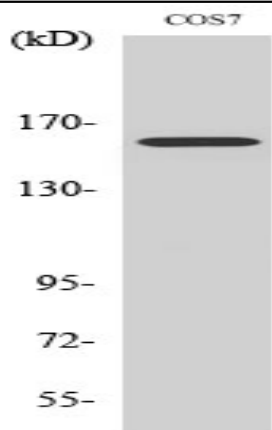


Rab 3 GAP p150 Polyclonal Antibody

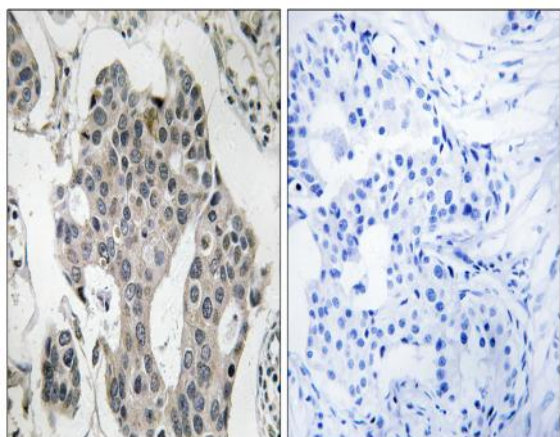
Catalog No :	YT3927
Reactivity :	Human;Mouse;Rat;Monkey
Applications :	WB;IHC;IF;ELISA
Target :	Rab 3 GAP p150
Gene Name :	RAB3GAP2
Protein Name :	Rab3 GTPase-activating protein non-catalytic subunit
Human Gene Id :	25782
Human Swiss Prot No :	Q9H2M9
Mouse Gene Id :	98732
Mouse Swiss Prot No :	Q8BMG7
Rat Gene Id :	289350
Rat Swiss Prot No :	Q5U1Z0
Immunogen :	The antiserum was produced against synthesized peptide derived from human RAB3GAP2. AA range:417-466
Specificity :	Rab 3 GAP p150 Polyclonal Antibody detects endogenous levels of Rab 3 GAP p150 protein.
Formulation :	Liquid in PBS containing 50% glycerol, 0.5% BSA and 0.02% sodium azide.
Source :	Polyclonal, Rabbit,IgG
Dilution :	WB 1:500 - 1:2000. IHC 1:100 - 1:300. ELISA: 1:40000.. IF 1:50-200
Purification :	The antibody was affinity-purified from rabbit antiserum by affinity-chromatography using epitope-specific immunogen.

Concentration :	1 mg/ml
Storage Stability :	-15°C to -25°C/1 year(Do not lower than -25°C)
Observed Band :	156kD
Background :	<p>The protein encoded by this gene belongs to the RAB3 protein family, members of which are involved in regulated exocytosis of neurotransmitters and hormones. This protein forms the Rab3 GTPase-activating complex with RAB3GAP1, where it constitutes the regulatory subunit, whereas the latter functions as the catalytic subunit. This gene has the highest level of expression in the brain, consistent with it having a key role in neurodevelopment. Mutations in this gene are associated with Martsolf syndrome.[provided by RefSeq, Oct 2009],</p>
Function :	<p>disease:Defects in RAB3GAP2 are the cause of Martsolf syndrome [MIM:212720]. Martsolf syndrome is characterized by congenital cataracts, mental retardation, and hypogonadism. Inheritance is autosomal recessive.,function:Regulatory subunit of a GTPase activating protein that has specificity for Rab3 subfamily (RAB3A, RAB3B, RAB3C and RAB3D). Rab3 proteins are involved in regulated exocytosis of neurotransmitters and hormones. Rab3 GTPase-activating complex specifically converts active Rab3-GTP to the inactive form Rab3-GDP. Required for normal eye and brain development. May participate in neurodevelopmental processes such as proliferation, migration and differentiation before synapse formation, and non-synaptic vesicular release of neurotransmitters.,similarity:Belongs to the Rab3-GAP regulatory subunit family.,subcellular location:In neurons, it is enriched in the synaptic soluble fracti</p>
Subcellular Location :	Cytoplasm. In neurons, it is enriched in the synaptic soluble fraction.
Expression :	Ubiquitous.
Sort :	13222
No4 :	1
Host :	Rabbit
Modifications :	Unmodified

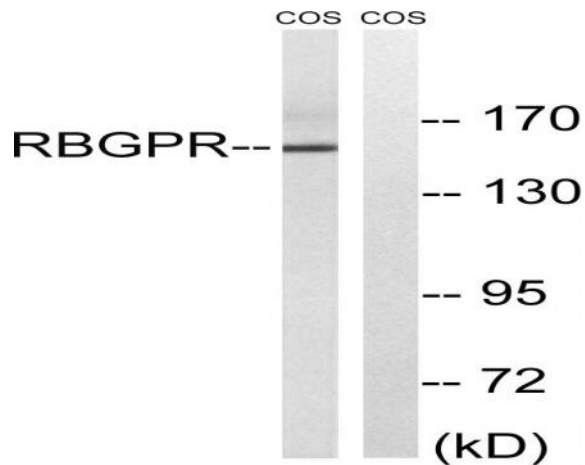
Products Images



Western Blot analysis of various cells using Rab 3 GAP p150 Polyclonal Antibody



Immunohistochemistry analysis of paraffin-embedded human breast carcinoma tissue, using RAB3GAP2 Antibody. The picture on the right is blocked with the synthesized peptide.



Western blot analysis of lysates from COS cells, using RAB3GAP2 Antibody. The lane on the right is blocked with the synthesized peptide.