

Rab 31 Polyclonal Antibody

Catalog No :	YT3928
Reactivity :	Human;Mouse;Rat
Applications :	WB;ELISA;IHC
Target :	Rab 31
Fields :	>>Endocytosis
Gene Name :	RAB31
Protein Name :	Ras-related protein Rab-31
Human Gene Id :	11031
Human Swiss Prot No :	Q13636
Mouse Gene Id :	106572
Mouse Swiss Prot No :	Q921E2
Rat Gene Id :	246324
Rat Swiss Prot No :	Q6GQP4
Immunogen :	Synthesized peptide derived from Rab 31 . at AA range: 50-130
Specificity :	Rab 31 Polyclonal Antibody detects endogenous levels of Rab 31 protein.
Formulation :	Liquid in PBS containing 50% glycerol, 0.5% BSA and 0.02% sodium azide.
Source :	Polyclonal, Rabbit,IgG
Dilution :	WB 1:500-2000;IHC 1:50-300; ELISA 2000-20000
Purification :	The antibody was affinity-purified from rabbit antiserum by affinity-

chromatography using epitope-specific immunogen.

Concentration : 1 mg/ml

Storage Stability : -15°C to -25°C/1 year(Do not lower than -25°C)

Observed Band : 21kD

Cell Pathway : Endocytosis;

Background : Small GTP-binding proteins of the RAB family, such as RAB31, play essential roles in vesicle and granule targeting (Bao et al., 2002 [PubMed 11784320]).[supplied by OMIM, Jul 2009],

Function : similarity:Belongs to the small GTPase superfamily. Rab family.,tissue specificity:Highest expression in placenta and brain with lower levels in heart and lung. Not detected in liver, skeletal muscle, kidney or pancreas.,

Subcellular Location : Golgi apparatus, trans-Golgi network . Golgi apparatus, trans-Golgi network membrane ; Lipid-anchor ; Cytoplasmic side . Early endosome . Cytoplasmic vesicle, phagosome . Cytoplasmic vesicle, phagosome membrane ; Lipid-anchor ; Cytoplasmic side . Rapidly recruited to phagosomes containing S.aureus or M.tuberculosis (PubMed:21255211) . .

Expression : Highest expression in placenta and brain with lower levels in heart and lung. Not detected in liver, skeletal muscle, kidney or pancreas.

Sort : 13223

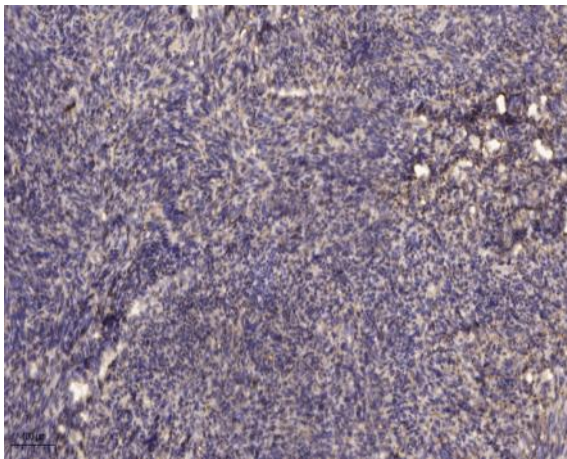
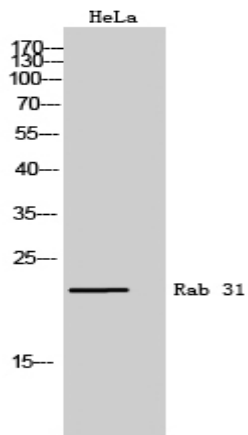
No4 : 1

Host : Rabbit

Modifications : Unmodified

Products Images

Western Blot analysis of HeLa cells using Rab 31 Polyclonal Antibody



Immunohistochemical analysis of paraffin-embedded human uterus. 1, Antibody was diluted at 1:200(4° overnight). 2, Tris-EDTA,pH9.0 was used for antigen retrieval. 3,Secondary antibody was diluted at 1:200(room temperature, 45min).