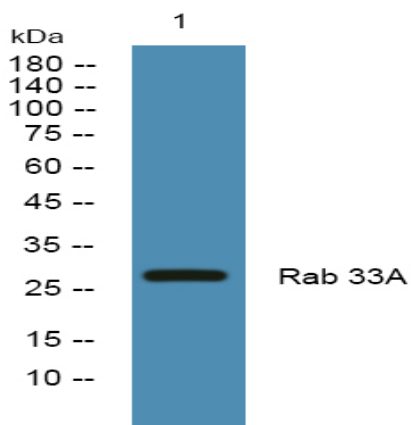


**Rab 33A Polyclonal Antibody**

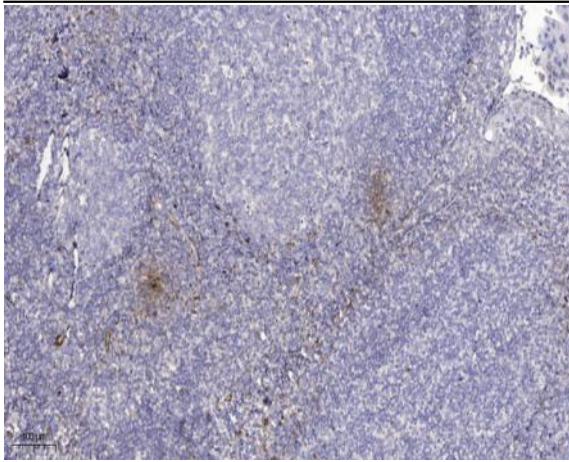
<b>Catalog No :</b>	YT3929
<b>Reactivity :</b>	Human;Mouse;Rat
<b>Applications :</b>	WB;ELISA;IHC
<b>Target :</b>	Rab 33A
<b>Gene Name :</b>	RAB33A
<b>Protein Name :</b>	Ras-related protein Rab-33A
<b>Human Gene Id :</b>	9363
<b>Human Swiss Prot No :</b>	Q14088
<b>Mouse Gene Id :</b>	19337
<b>Mouse Swiss Prot No :</b>	P97950
<b>Immunogen :</b>	The antiserum was produced against synthesized peptide derived from human RAB33A. AA range:132-181
<b>Specificity :</b>	Rab 33A Polyclonal Antibody detects endogenous levels of Rab 33A protein.
<b>Formulation :</b>	Liquid in PBS containing 50% glycerol, 0.5% BSA and 0.02% sodium azide.
<b>Source :</b>	Polyclonal, Rabbit,IgG
<b>Dilution :</b>	WB 1:500-2000;IHC 1:50-300; ELISA 2000-20000
<b>Purification :</b>	The antibody was affinity-purified from rabbit antiserum by affinity-chromatography using epitope-specific immunogen.
<b>Concentration :</b>	1 mg/ml
<b>Storage Stability :</b>	-15°C to -25°C/1 year(Do not lower than -25°C)

<b>Observed Band :</b>	27kD
<b>Background :</b>	The protein encoded by this gene belongs to the small GTPase superfamily, Rab family. It is GTP-binding protein and may be involved in vesicle transport. [provided by RefSeq, Jul 2008],
<b>Function :</b>	similarity:Belongs to the small GTPase superfamily. Rab family.,tissue specificity:Expressed only in lymphoid cell lines.,
<b>Subcellular Location :</b>	Cell membrane ; Lipid-anchor ; Cytoplasmic side .
<b>Expression :</b>	Expressed only in lymphoid cell lines.
<b>Sort :</b>	13224
<b>No4 :</b>	1
<b>Host :</b>	Rabbit
<b>Modifications :</b>	Unmodified

## Products Images



Western blot analysis of lysates from SH-SY5Y cells, primary antibody was diluted at 1:1000, 4° over night



Immunohistochemical analysis of paraffin-embedded human tonsil. 1, Antibody was diluted at 1:200(4 ° overnight). 2, Tris-EDTA,pH9.0 was used for antigen retrieval. 3,Secondary antibody was diluted at 1:200(room temperature, 45min).