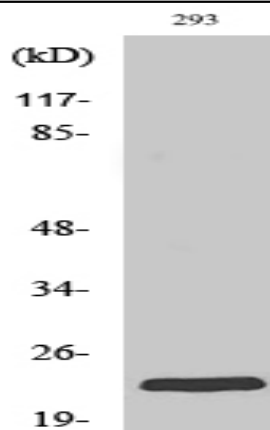


Rab 35 Polyclonal Antibody

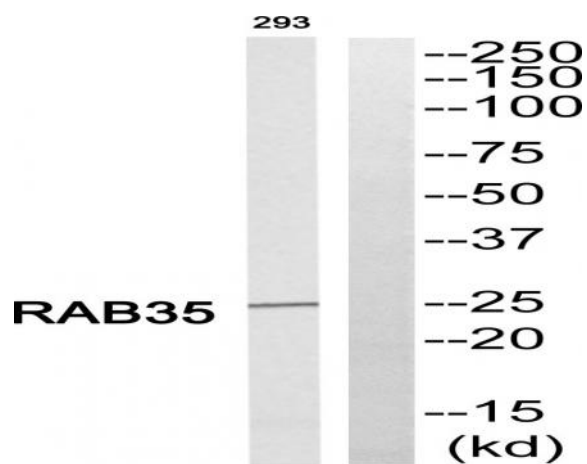
Catalog No :	YT3931
Reactivity :	Human;Mouse;Rat
Applications :	WB;ELISA;IHC
Target :	Rab 35
Fields :	>>Endocytosis
Gene Name :	RAB35
Protein Name :	Ras-related protein Rab-35
Human Gene Id :	11021
Human Swiss Prot No :	Q15286
Mouse Gene Id :	77407
Mouse Swiss Prot No :	Q6PHN9
Rat Gene Id :	288700
Rat Swiss Prot No :	Q5U316
Immunogen :	The antiserum was produced against synthesized peptide derived from human RAB35. AA range:99-148
Specificity :	Rab 35 Polyclonal Antibody detects endogenous levels of Rab 35 protein.
Formulation :	Liquid in PBS containing 50% glycerol, 0.5% BSA and 0.02% sodium azide.
Source :	Polyclonal, Rabbit,IgG
Dilution :	WB 1:500-2000;IHC 1:50-300; ELISA 2000-20000

Purification :	The antibody was affinity-purified from rabbit antiserum by affinity-chromatography using epitope-specific immunogen.
Concentration :	1 mg/ml
Storage Stability :	-15°C to -25°C/1 year(Do not lower than -25°C)
Observed Band :	24kD
Background :	function:Possesses GTPase activity.,similarity:Belongs to the small GTPase superfamily. Rab family.,subcellular location:Identified by mass spectrometry in melanosome fractions from stage I to stage IV.,
Function :	function:Possesses GTPase activity.,similarity:Belongs to the small GTPase superfamily. Rab family.,subcellular location:Identified by mass spectrometry in melanosome fractions from stage I to stage IV.,
Subcellular Location :	Cell membrane ; Lipid-anchor ; Cytoplasmic side . Membrane, clathrin-coated pit . Cytoplasmic vesicle, clathrin-coated vesicle . Endosome . Melanosome . Present on sorting endosomes and recycling endosome tubules (PubMed:16950109). Tends to be enriched in PIP2-positive cell membrane domains (PubMed:16950109). During mitosis, associated with the plasma membrane and present at the ingressing furrow during early cytokinesis as well as at the intercellular bridge later during cytokinesis (PubMed:16950109). Identified in stage I to stage IV melanosomes (PubMed:17081065). .
Expression :	Brain,Muscle,Uterus,
Sort :	13226
No4 :	1
Host :	Rabbit
Modifications :	Unmodified

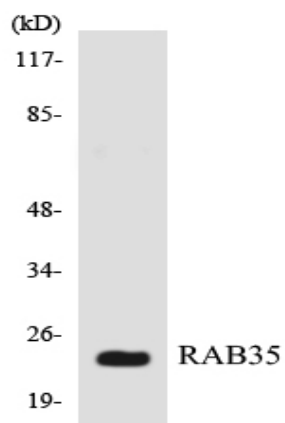
Products Images



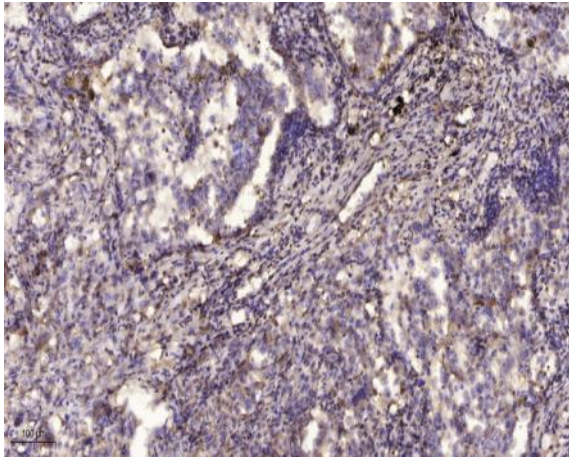
Western Blot analysis of various cells using Rab 35 Polyclonal Antibody



Western blot analysis of RAB35 Antibody. The lane on the right is blocked with the RAB35 peptide.



Western blot analysis of the lysates from HT-29 cells using RAB35 antibody.



Immunohistochemical analysis of paraffin-embedded human lung cancer. 1, Antibody was diluted at 1:200(4° overnight). 2, Tris-EDTA,pH9.0 was used for antigen retrieval. 3,Secondary antibody was diluted at 1:200(room temperature, 45min).