

## Rab 37 Polyclonal Antibody

<b>Catalog No :</b>	YT3932
<b>Reactivity :</b>	Human;Mouse
<b>Applications :</b>	WB;IHC;IF;ELISA
<b>Target :</b>	Rab 37
<b>Gene Name :</b>	RAB37
<b>Protein Name :</b>	Ras-related protein Rab-37
<b>Human Gene Id :</b>	326624
<b>Human Swiss Prot No :</b>	Q96AX2
<b>Mouse Swiss Prot No :</b>	Q9JKM7
<b>Immunogen :</b>	The antiserum was produced against synthesized peptide derived from human RAB37. AA range:170-219
<b>Specificity :</b>	Rab 37 Polyclonal Antibody detects endogenous levels of Rab 37 protein.
<b>Formulation :</b>	Liquid in PBS containing 50% glycerol, 0.5% BSA and 0.02% sodium azide.
<b>Source :</b>	Polyclonal, Rabbit,IgG
<b>Dilution :</b>	WB 1:500 - 1:2000. IHC 1:100 - 1:300. ELISA: 1:5000.. IF 1:50-200
<b>Purification :</b>	The antibody was affinity-purified from rabbit antiserum by affinity-chromatography using epitope-specific immunogen.
<b>Concentration :</b>	1 mg/ml
<b>Storage Stability :</b>	-15°C to -25°C/1 year(Do not lower than -25°C)
<b>Observed Band :</b>	26kD

**Background :** Rab proteins are low molecular mass GTPases that are critical regulators of vesicle trafficking. For additional background information on Rab proteins, see MIM 179508.[supplied by OMIM, Apr 2006],

**Function :** similarity:Belongs to the small GTPase superfamily. Rab family.,subcellular location:Secretory granules.,

**Subcellular Location :** Cytoplasmic vesicle. Secretory granules. .

**Expression :** Brain,Platelet,Prostate,Thalamus,Thymus,Trachea,

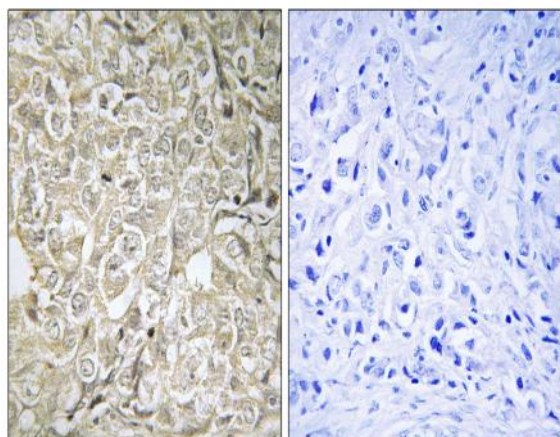
**Sort :** 13227

**No4 :** 1

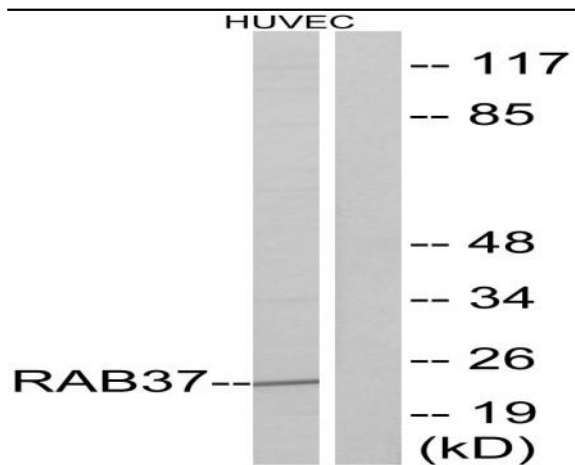
**Host :** Rabbit

**Modifications :** Unmodified

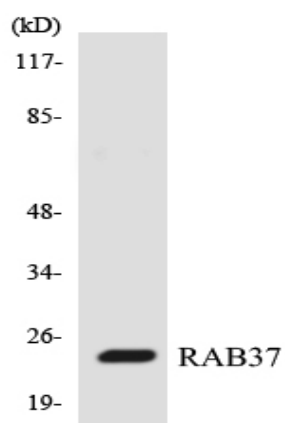
## Products Images



Immunohistochemistry analysis of paraffin-embedded human prostate carcinoma tissue, using RAB37 Antibody. The picture on the right is blocked with the synthesized peptide.



Western blot analysis of lysates from HUVEC cells, using RAB37 Antibody. The lane on the right is blocked with the synthesized peptide.



Western blot analysis of the lysates from HepG2 cells using RAB37 antibody.