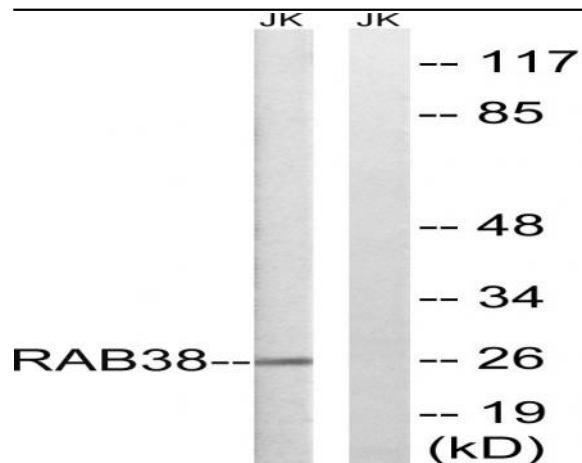


Rab 38 Polyclonal Antibody

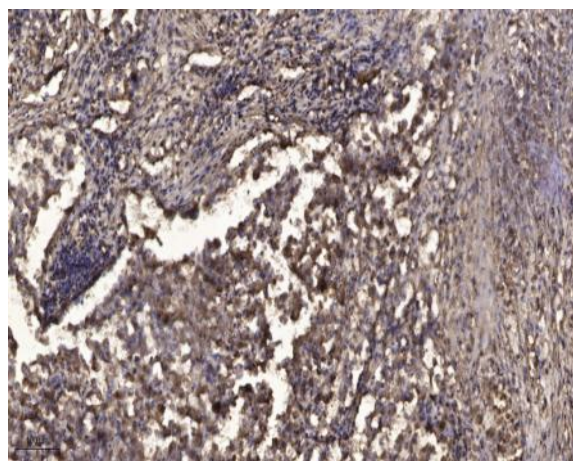
Catalog No :	YT3933
Reactivity :	Human;Mouse;Rat
Applications :	WB;IHC
Target :	Rab 38
Gene Name :	RAB38
Protein Name :	Ras-related protein Rab-38
Human Gene Id :	23682
Human Swiss Prot No :	P57729
Mouse Gene Id :	72433
Mouse Swiss Prot No :	Q8QZZ8
Immunogen :	The antiserum was produced against synthesized peptide derived from human RAB38. AA range:80-129
Specificity :	Rab 38 Polyclonal Antibody detects endogenous levels of Rab 38 protein.
Formulation :	Liquid in PBS containing 50% glycerol, 0.5% BSA and 0.02% sodium azide.
Source :	Polyclonal, Rabbit,IgG
Dilution :	WB 1:500-2000;IHC 1:50-300
Purification :	The antibody was affinity-purified from rabbit antiserum by affinity-chromatography using epitope-specific immunogen.
Concentration :	1 mg/ml
Storage Stability :	-15°C to -25°C/1 year(Do not lower than -25°C)

Observed Band :	26kD
Background :	function:May be involved in melanosomal transport and docking. Involved in the proper sorting of TYRP1.,PTM:Although at least one in vitro system can process and methylate the prenylated C-terminal, in an in vitro system that normally express Rab-38 and in vivo the prenylated C-terminal is not proteolytically processed and not methylated.,similarity:Belongs to the small GTPase superfamily. Rab family.,tissue specificity:Expressed in melanocytes.,
Function :	function:May be involved in melanosomal transport and docking. Involved in the proper sorting of TYRP1.,PTM:Although at least one in vitro system can process and methylate the prenylated C-terminal, in an in vitro system that normally express Rab-38 and in vivo the prenylated C-terminal is not proteolytically processed and not methylated.,similarity:Belongs to the small GTPase superfamily. Rab family.,tissue specificity:Expressed in melanocytes.,
Subcellular Location :	Cell membrane ; Lipid-anchor ; Cytoplasmic side . Melanosome . Cytoplasmic vesicle, phagosome . Cytoplasmic vesicle, phagosome membrane ; Lipid-anchor ; Cytoplasmic side . Melanosome membrane . Recruited to phagosomes containing S.aureus or M.tuberculosis (PubMed:21255211). The BLOC-3 complex, a heterodimer of HPS1 and HPS4 promotes its membrane localization (PubMed:23084991). .
Expression :	Expressed in melanocytes.
Sort :	13228
No4 :	1
Host :	Rabbit
Modifications :	Unmodified

Products Images



Western blot analysis of lysates from Jurkat cells, using RAB38 Antibody. The lane on the right is blocked with the synthesized peptide.



Immunohistochemical analysis of paraffin-embedded human Squamous cell carcinoma of lung. 1, Antibody was diluted at 1:200(4° overnight). 2, Tris-EDTA,pH9.0 was used for antigen retrieval. 3,Secondary antibody was diluted at 1:200(room temperature, 45min).