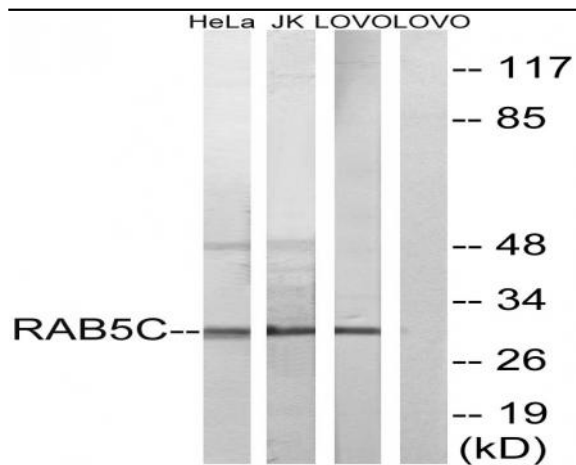


Rab 5C Polyclonal Antibody

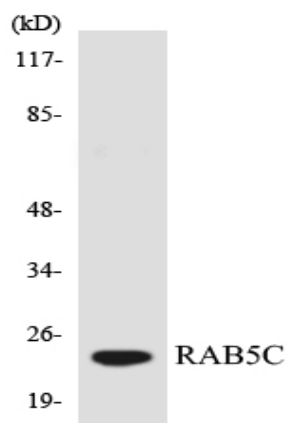
Catalog No :	YT3936
Reactivity :	Human;Mouse;Rat
Applications :	WB;IHC;IF;ELISA
Target :	Rab 5C
Fields :	>>Ras signaling pathway;>>Endocytosis;>>Phagosome;>>Vasopressin-regulated water reabsorption;>>Salmonella infection;>>Amoebiasis;>>Tuberculosis
Gene Name :	RAB5C
Protein Name :	Ras-related protein Rab-5C
Human Gene Id :	5878
Human Swiss Prot No :	P51148
Mouse Gene Id :	19345
Mouse Swiss Prot No :	P35278
Immunogen :	The antiserum was produced against synthesized peptide derived from human RAB5C. AA range:122-171
Specificity :	Rab 5C Polyclonal Antibody detects endogenous levels of Rab 5C protein.
Formulation :	Liquid in PBS containing 50% glycerol, 0.5% BSA and 0.02% sodium azide.
Source :	Polyclonal, Rabbit,IgG
Dilution :	WB 1:500 - 1:2000. IHC 1:100 - 1:300. ELISA: 1:5000.. IF 1:50-200
Purification :	The antibody was affinity-purified from rabbit antiserum by affinity-chromatography using epitope-specific immunogen.

Concentration :	1 mg/ml
Storage Stability :	-15°C to -25°C/1 year(Do not lower than -25°C)
Observed Band :	30kD
Cell Pathway :	Endocytosis;
Background :	Members of the Rab protein family are small GTPases of the Ras superfamily that are thought to ensure fidelity in the process of docking and/or fusion of vesicles with their correct acceptor compartment (Han et al., 1996 [PubMed 8646882]).[supplied by OMIM, Nov 2010],
Function :	function:Protein transport. Probably involved in vesicular traffic.,similarity:Belongs to the small GTPase superfamily. Rab family.,subcellular location:Identified by mass spectrometry in melanosome fractions from stage I to stage IV.,subunit:Binds EEA1.,
Subcellular Location :	Cell membrane ; Lipid-anchor ; Cytoplasmic side . Early endosome membrane ; Lipid-anchor . Melanosome . Identified by mass spectrometry in melanosome fractions from stage I to stage IV. .
Expression :	Brain,Lung,
Sort :	13232
No4 :	1
Host :	Rabbit
Modifications :	Unmodified

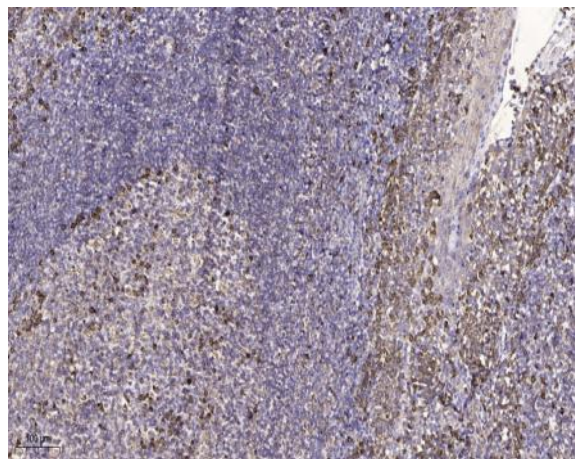
Products Images



Western blot analysis of lysates from LOVO, HeLa, and Jurkat cells, using RAB5C Antibody. The lane on the right is blocked with the synthesized peptide.



Western blot analysis of the lysates from 293 cells using RAB5C antibody.



Immunohistochemical analysis of paraffin-embedded human tonsil. 1, Antibody was diluted at 1:200(4° overnight). 2, Tris-EDTA,pH9.0 was used for antigen retrieval. 3,Secondary antibody was diluted at 1:200(room temperature, 45min).