

Rab 7L1 Polyclonal Antibody

Catalog No :	YT3939
Reactivity :	Human;Mouse;Rat
Applications :	WB;ELISA;IHC
Target :	Rab 7L1
Gene Name :	RAB7L1
Protein Name :	Ras-related protein Rab-7L1
Human Gene Id :	8934
Human Swiss Prot No :	O14966
Mouse Swiss Prot No :	Q91YQ1
Rat Gene Id :	171122
Rat Swiss Prot No :	Q63481
Immunogen :	The antiserum was produced against synthesized peptide derived from human RAB7L1. AA range:115-164
Specificity :	Rab 7L1 Polyclonal Antibody detects endogenous levels of Rab 7L1 protein.
Formulation :	Liquid in PBS containing 50% glycerol, 0.5% BSA and 0.02% sodium azide.
Source :	Polyclonal, Rabbit,IgG
Dilution :	WB 1:500-2000;IHC 1:50-300; ELISA 2000-20000
Purification :	The antibody was affinity-purified from rabbit antiserum by affinity-chromatography using epitope-specific immunogen.
Concentration :	1 mg/ml

Storage Stability : -15°C to -25°C/1 year(Do not lower than -25°C)

Observed Band : 28kD

Background : similarity:Belongs to the small GTPase superfamily. Rab family.,tissue specificity:Ubiquitous.,

Function : similarity:Belongs to the small GTPase superfamily. Rab family.,tissue specificity:Ubiquitous.,

Subcellular Location : Cell membrane ; Lipid-anchor ; Cytoplasmic side . Cytoplasm . Cytoplasm, perinuclear region . Golgi apparatus . Golgi apparatus, trans-Golgi network . Vacuole . Cytoplasm, cytoskeleton . Colocalizes with LRRK2 along tubular structures emerging from Golgi apparatus (PubMed:29212815). Colocalizes with GM130 at the Golgi apparatus (PubMed:22042847). Colocalizes with dynamic tubules emerging from and retracting to the Golgi apparatus (PubMed:22042847). Colocalizes with TGN46 at the trans-Golgi network (TGN) (PubMed:24788816). In Salmonella enterica serovar Typhi (S.Typhi) infected epithelial cells, is recruited and colocalized with both S.Typhi-containing vacuoles and dynamic tubules as well as those emerging from the vacuole toward the cell periphery (PubMed:22042847). .

Expression : Ubiquitous.

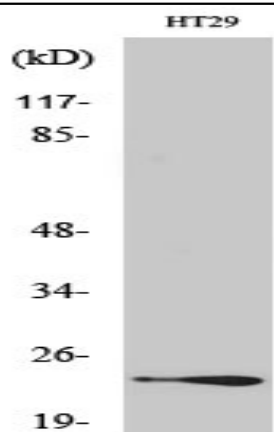
Sort : 13235

No4 : 1

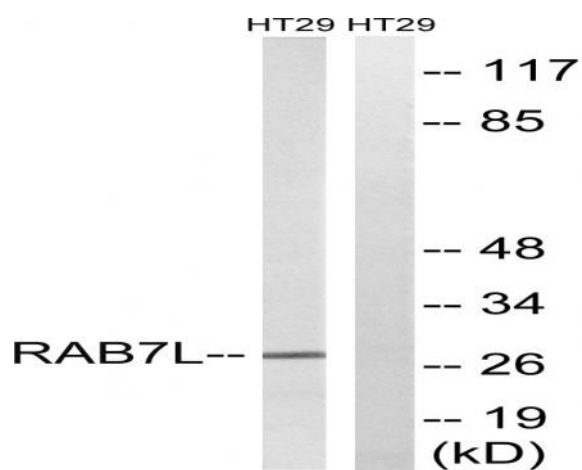
Host : Rabbit

Modifications : Unmodified

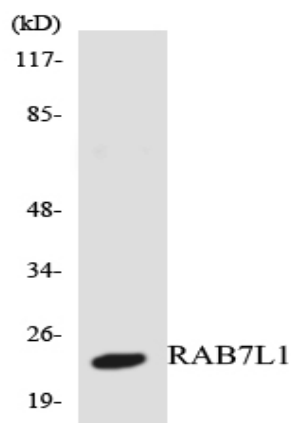
Products Images



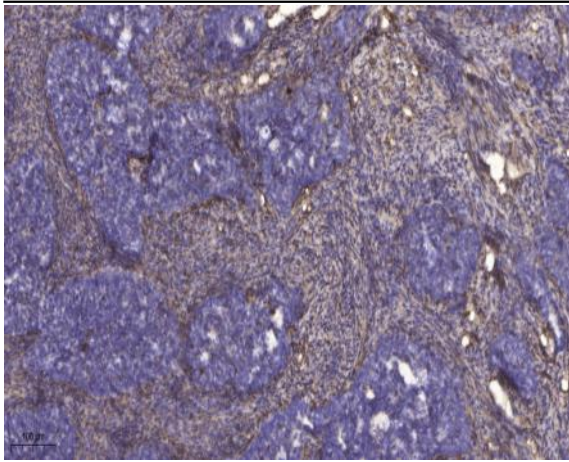
Western Blot analysis of various cells using Rab 7L1 Polyclonal Antibody



Western blot analysis of lysates from HT-29 cells, using RAB7L1 Antibody. The lane on the right is blocked with the synthesized peptide.



Western blot analysis of the lysates from HepG2 cells using RAB7L1 antibody.



Immunohistochemical analysis of paraffin-embedded human cervical carcinoma. 1, Antibody was diluted at 1:200(4° overnight). 2, Tris-EDTA,pH9.0 was used for antigen retrieval. 3,Secondary antibody was diluted at 1:200(room temperature, 45min).