

## Rab L2A Polyclonal Antibody

<b>Catalog No :</b>	YT3940
<b>Reactivity :</b>	Human
<b>Applications :</b>	WB;IHC;IF;ELISA
<b>Target :</b>	Rab L2A
<b>Gene Name :</b>	RABL2A
<b>Protein Name :</b>	Rab-like protein 2A
<b>Human Gene Id :</b>	11159
<b>Human Swiss Prot No :</b>	Q9UBK7
<b>Immunogen :</b>	The antiserum was produced against synthesized peptide derived from human RABL2A. AA range:179-228
<b>Specificity :</b>	Rab L2A Polyclonal Antibody detects endogenous levels of Rab L2A protein.
<b>Formulation :</b>	Liquid in PBS containing 50% glycerol, 0.5% BSA and 0.02% sodium azide.
<b>Source :</b>	Polyclonal, Rabbit,IgG
<b>Dilution :</b>	WB 1:500 - 1:2000. IHC 1:100 - 1:300. ELISA: 1:20000.. IF 1:50-200
<b>Purification :</b>	The antibody was affinity-purified from rabbit antiserum by affinity-chromatography using epitope-specific immunogen.
<b>Concentration :</b>	1 mg/ml
<b>Storage Stability :</b>	-15°C to -25°C/1 year(Do not lower than -25°C)
<b>Observed Band :</b>	30-34kD
<b>Background :</b>	This gene is a member of the RAB gene family which belongs to the RAS GTPase superfamily. The proteins in the family of RAS-related signaling

molecules are small GTP-binding proteins that play important roles in the regulation of exocytotic and endocytotic pathways. This gene maps to the site of an ancestral telomere fusion event and may be a subtelomeric gene. Alternative splicing results in multiple transcript variants encoding different isoforms. [provided by RefSeq, Apr 2015],

**Function :**

similarity:Belongs to the small GTPase superfamily. Rab family.,

**Subcellular Location :**

intracellular,

**Expression :**

Expressed in the testis.

**Sort :**

13236

**No4 :**

1

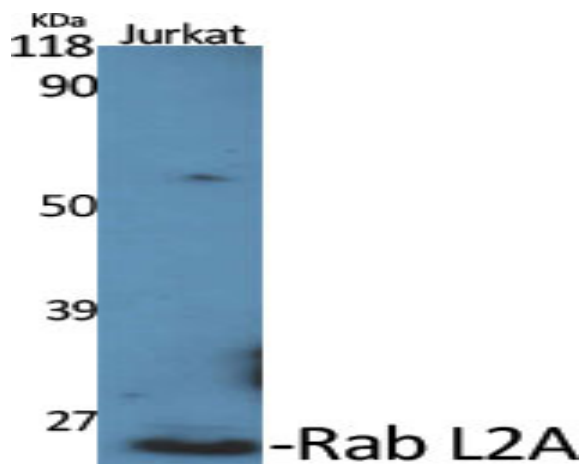
**Host :**

Rabbit

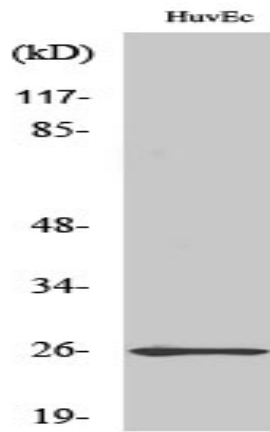
**Modifications :**

Unmodified

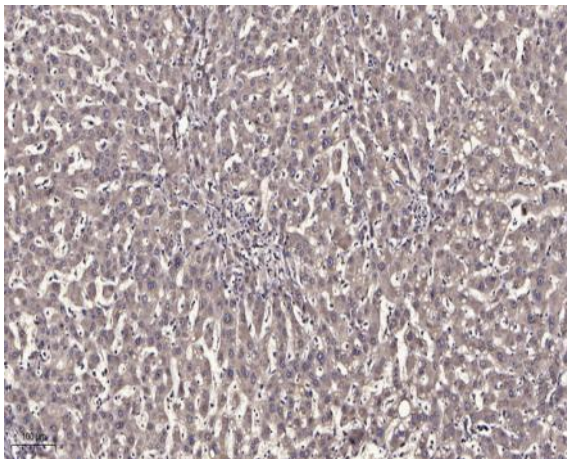
## Products Images



Western Blot analysis of various cells using Rab L2A Polyclonal Antibody diluted at 1:500



Western Blot analysis of COLO205 cells using Rab L2A Polyclonal Antibody diluted at 1:500



Immunohistochemical analysis of paraffin-embedded human liver cancer. 1, Antibody was diluted at 1:200(4° overnight). 2, Tris-EDTA,pH9.0 was used for antigen retrieval. 3,Secondary antibody was diluted at 1:200(room temperature, 45min).