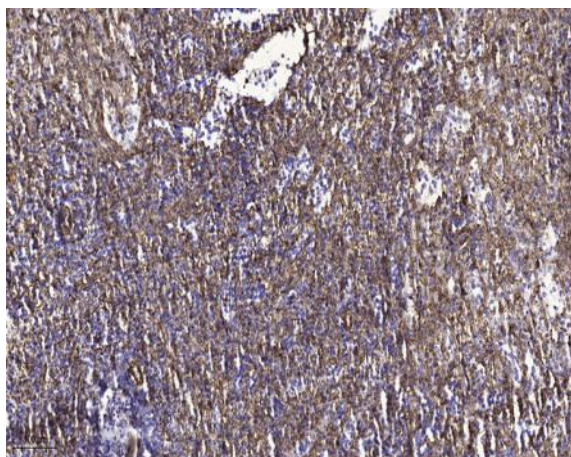


Rab L5 Polyclonal Antibody

Catalog No :	YT3941
Reactivity :	Human;Rat;Mouse;
Applications :	IHC;IF;ELISA
Target :	Rab L5
Gene Name :	RABL5
Protein Name :	Rab-like protein 5
Human Gene Id :	64792
Human Swiss Prot No :	Q9H7X7
Mouse Swiss Prot No :	Q9DAI2
Immunogen :	The antiserum was produced against synthesized peptide derived from human RABL5. AA range:128-177
Specificity :	Rab L5 Polyclonal Antibody detects endogenous levels of Rab L5 protein.
Formulation :	Liquid in PBS containing 50% glycerol, 0.5% BSA and 0.02% sodium azide.
Source :	Polyclonal, Rabbit,IgG
Dilution :	IHC 1:100 - 1:300. ELISA: 1:5000.. IF 1:50-200
Purification :	The antibody was affinity-purified from rabbit antiserum by affinity-chromatography using epitope-specific immunogen.
Concentration :	1 mg/ml
Storage Stability :	-15°C to -25°C/1 year(Do not lower than -25°C)
Molecularweight :	21kD

Background :	<u>similarity:Belongs to the small GTPase superfamily. Rab family.,</u>
Function :	<u>similarity:Belongs to the small GTPase superfamily. Rab family.,</u>
Subcellular Location :	<u>Cell projection, cilium .</u>
Expression :	<u>Amygdala,Brain,Lung,Mammary gland,Ovary,</u>
Sort :	<u>13237</u>
No4 :	<u>1</u>
Host :	<u>Rabbit</u>
Modifications :	<u>Unmodified</u>

Products Images



Immunohistochemical analysis of paraffin-embedded human spleen tissue. 1,primary Antibody was diluted at 1:200(4° overnight). 2, Sodium citrate pH 6.0 was used for antigen retrieval(>98 °C,20min). 3,Secondary antibody was diluted at 1:200